



**YOUR
LUXEMBOURG
MAGAZINE
2024**

by **LUXEMBOURG TIMES**



Welcome to Luxembourg

Need assistance at work? Problems with social security? Difficulty filling out your tax return?

The OGBL, the largest trade union in Luxembourg, is there to listen and support you. Contact us:

T. +352 2 6543 777 | contact.ogbl.lu

YOUR GUIDE TO LUXEMBOURG

Moving to a new country comes with many challenges, forms to fill out, to-do lists to be ticked off.

But it is also an opportunity to discover new cultures, make friends, learn a new language and embrace change.

The **Your Luxembourg** magazine will help you with both – understanding the paperwork of registering at your commune and exchanging your driver's licence but also delving into local traditions and taking you around popular neighbourhoods.

From food and nightlife, leisure and travel, health and wellbeing, work and personal finance to education and family, this magazine provides an at-a-glance guide to the key things you need to know as you settle into your new life in the Grand Duchy and the Greater Region.

We could not squeeze every topic into one edition, and there is much more information available online in the **Your Luxembourg** pages of the **Luxembourg Times**, your source for the news that matters in politics, business and finance.

Whether you have just arrived or are a Luxembourg local, there is no shortage of things to eat, see, drink and do, and there is always a new favourite spot or activity waiting to be unearthed.

Enjoy making Luxembourg your Luxembourg!

Cordula Schnuer,
Editor-in-Chief, Luxembourg Times



IMPRINT

PUBLISHER: Mediahuis Luxembourg S.A.
31, rue de Hollerich, L-1741 Luxembourg
Tél. +352 4993 9000

CEO: Paul Peckels

WRITER: Sarita Rao

ARTISTIC DIRECTION & DESIGN:

Zoë. Zoë Mondloch
www.zoemondloch.com

COORDINATION: Gladys Donneaux

ADVERTISING: Mediahuis Luxembourg S.A. -
Regie.lu
email: regie@regie.lu
brain&more -
agence en communication
email: brain@brain.lu

PRINT: IPP Printers

Emmastraat 6c - 4811 AG Breda - Nederland

CIRCULATION: 5,500 copies

ISBN: 978_99987_891_5_9

MORE YOUR LUXEMBOURG ARTICLES?
LUXEMBOURG TIMES

SCAN ME:



TABLE OF CONTENTS

06-09

WELCOME TO LUXEMBOURG
DID YOU KNOW?
Luxembourg
in numbers



10-39

ESSENTIAL INFORMATION AND DETAILS
ON NEIGHBOURHOODS AND TRADITIONS
Luxembourg Guide



40-53
FROM HOSPITALS TO SPORTS CLUBS
Health & Wellbeing



54-67

OVERVIEW OF THE LABOUR MARKET
& ITS SPECIFICITIES
Work & Personal Finance





84-99

**WINETASTING,
DANCING
& MORE**

Food & Nightlife



68-83

**CHOOSING
THE RIGHT SCHOOL**
Family & Education



100-111

**DISCOVERING LUXEMBOURG AND
THE GREATER REGION'S BEST SPOTS**
Leisure & Travel

112-118

**EXPLORING LUXEMBOURG'S
HISTORY, SIGHTS & PARKS**

City Tourism

LUXEMBOURG IN NUMBERS



**THE HIGHEST
MEDIAN
DISPOSABLE
INCOME**

in the EU in 2022.



University of Luxembourg ranked
**4TH WORLDWIDE FOR
ITS INTERNATIONAL
OUTLOOK**

in the Times Higher Education World
University Rankings 2023.

**HIGHEST GDP
PER INHABITANT
(PURCHASING
POWER STANDARDS)
OF EU27 COUNTRIES**



The Luxembourg passport
IS RANKED 4TH IN THE WORLD,
with citizens able to travel visa-free to
189 COUNTRIES



The monthly
minimum wage
for a skilled
worker

€3,085

Luxembourg is
**THE HIGHEST RANKED
FINANCIAL CENTRE
FOR GREEN FINANCE
IN THE EU & 7TH OUT OF 96
FINANCIAL CENTRES
GLOBALLY**

in the Green Global Finance Index
23 April 2024.

Luxembourg ranks
**6TH IN THE
WORLD**

Justice Project Rule of
Law Index out of

**142
COUNTRIES
& JURISDICTIONS**
around the world.



Luxembourg ranked
**7TH IN LEGATUM
PROSPERITY INDEX 2023
(AND 1ST GLOBALLY
FOR SAFETY AND SECURITY)**

5TH OUT OF 121 COUNTRIES
in the Digital Quality Life Index for overall internet
affordability, quality, infrastructure and security,
**& 2ND FOR INTERNET
AFFORDABILITY**

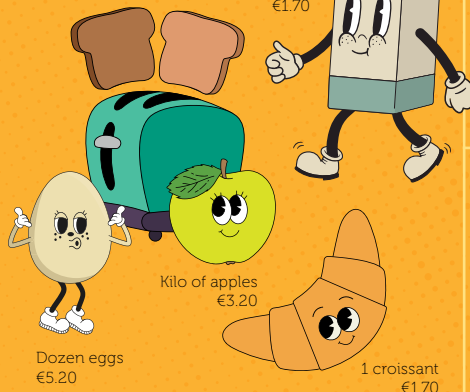


Luxembourg is
**8TH IN THE
UNITED
NATIONS
WORLD
HAPPINESS
REPORT
FOR 2024**

**JUNE 2023,
COST OF LIVING
(AVE PRICE)**

Loaf of bread
€3.50

Litre of milk
€1.70



Dozen eggs
€5.20

Kilo of apples
€3.20

1 croissant
€1.70

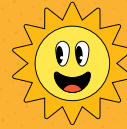


Luxembourg ranks
**FIRST IN
EUROPE FOR
ITS WORK LIFE
BALANCE**

out of 30 countries
according to a 2023 study
by Remote.

Luxembourg is
**THE BEST-
PERFORMING
COUNTRY IN
THE WORLD**

for attracting talent
Global Talent
Competitiveness Index.



LUXEMBOURG CITY IN FIGURES

Size: 51.73 km² **27.7%** agriculture **22%** forest **30%** buildings **8.7%** squares and streets

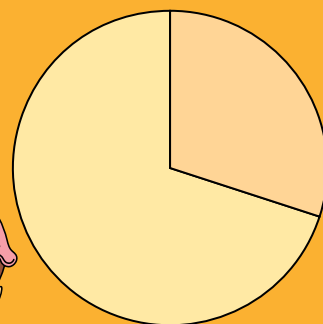
DISTRICTS WITH THE HIGHEST POPULATIONS

1. Bonnevoie 13,345
2. Belair 12,815
3. Gare 11,513
4. Limpertsberg 11,424
5. Gasperich 10,113
6. Kirchberg 9,714

MICHELIN-STARRED RESTAURANTS IN THE CITY

MOSCONI, GRUND
RYÔDO, HOLLERICH
LA VILLA DE CAMILLE & JULIEN, PULVERMÜHL

TOTAL POPULATION
134,714



29.2% Luxembourger
70.8% Foreign resident

MARKETS

Stater Maart

(Place Guillaume)

– Wednesday and Saturday –
7.30 to 14.00

Bouneweger Maart

(Place Léon XIII)

– Tuesday –
6.00 to 19.00

Garer Maart

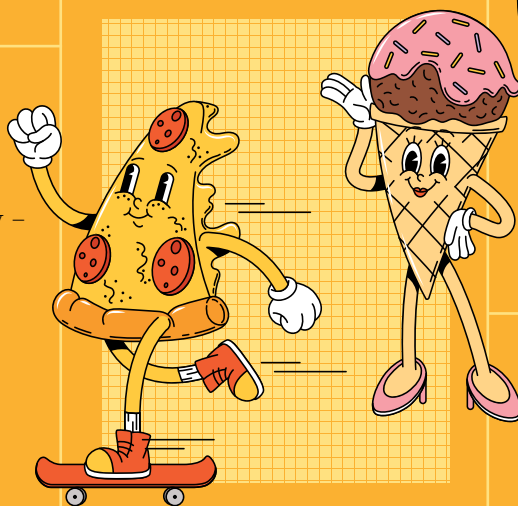
(Place de Paris)

– Thursday –
7.30 to 14.00

Glacismaart

(Champ du Glacis)

– Third Sunday of the month
May to November –
10.00 to 17.00



167 NATIONALITIES

118,417 EUROPEANS

8,277 ASIANS

4,634 AFRICANS

3,163 AMERICANS

SHOPPING & DINING IN THE CITY

165 HEALTH & BEAUTY SHOPS

222 FASHION & ACCESSORY SHOPS

181 HOME & HOBBY SHOPS (INCLUDING BOOKSHOPS)

120 TASTES & FLAVOURS SHOPS

367 RESTAURANTS, CAFES & HOTELS

EU NATIONALITIES LIVING IN THE CITY

1. Luxembourgish 39,826

2. French 20,827

3. Portuguese 11,315

4. Italian 9,918

5. Spanish 5,139

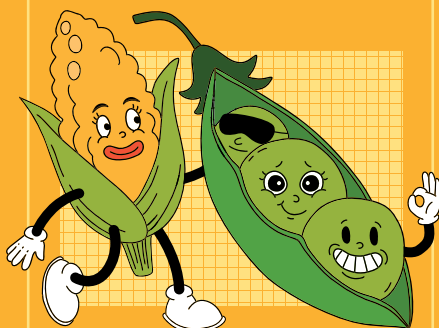
6. Belgian 4,389

7. German 3,829

8. Romanian 2,508

9. Greek 2,140

10. Polish 1,815



INVEST WITH MORE ASSETS IN HAND

30 stock exchanges, 24 currencies and 1 million products with the security of a bank.



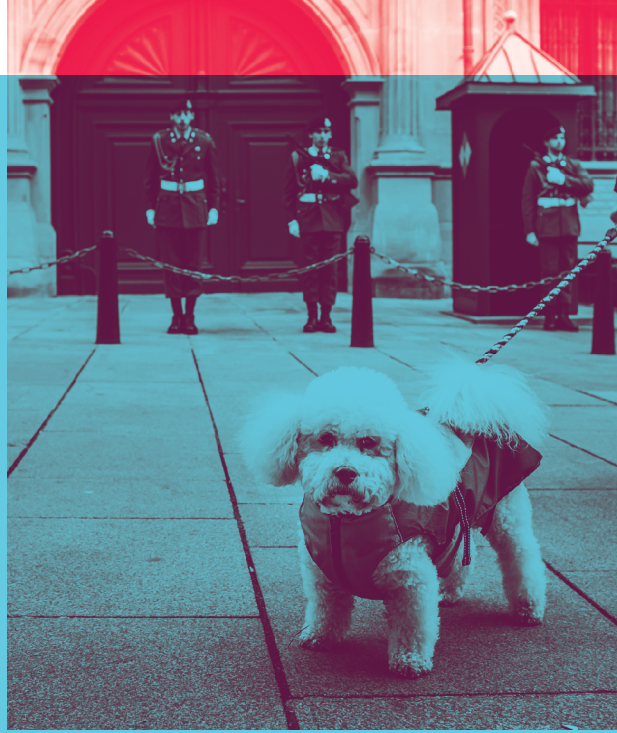
[swissquote.lu](https://www.swissquote.lu)

 **Swissquote**

All investments carry a degree of risk.

Consumer protection rules may not apply to Digital Assets.

Swissquote Bank Europe SA – RCS B78729. Bank licensed in Luxembourg under supervision of the CSSF.



GETTING TO KNOW LUXEMBOURG



©LMIH/Sabino Parente, Focalize



LUXEMBOURG GUIDE


Whether you've just moved to Luxembourg or been living here a long time, our guide will help you discover more about the Grand Duchy.

Our **Essential Information** page lists important phone numbers and websites for emergency services and doctors, plus information on the government Guichet.lu portal, social security and health contacts, in addition to a list of internet providers and an overview on how to dispose of your waste.

A **historical timeline** for the Grand Duchy shows the key dates in the country's history and an overview on the different immigrants that arrived in Luxembourg to support the iron and steel industry, construction, finance, and the institutions of the European Union.

With 170 nationalities calling Luxembourg home, we take you on a whistle-stop tour of some of the **multi-cultural associations** in Luxembourg, the annual Bazar International, business clubs and chambers of commerce.

We also call in on several **neighbourhoods** including those with historic charm, a bohemian feel, leafy suburbs, charming villages and bigger commuter towns. Transport in Luxembourg is free, and our map



gives you an overview of train, tram and bus **transport**, plus bicycles to rent and car sharing schemes.

One way to integrate is to learn more about and get involved with the country's **local traditions** – so we've created a calendar of these to give you more detail. Another way is to meet people on the various forest paths with your pet. If you're planning on adopting a cat or dog, we give you the legal requirements, a list of pet shelters, breeders, pet shops and pet sitters.

Finally, if your place does not feel quite like home or you need a new sofa or bed, check out our list of **furnishing stores** and vintage shops, set out by price and to suit all budgets.



ESSENTIAL INFORMATION AT YOUR FINGERTIPS

An at-a-glance guide to all the essential numbers, email addresses or websites, from MyGuichet and emergency services, to internet providers and utilities.



MYGUICHET

Online services of Luxembourg government:

- ➔ View CNS reimbursements.
- ➔ Print residence certificates.
- ➔ File personal tax returns.
- ➔ Apply for a criminal record extract.
- ➔ Apply for the family allowance.

HOW DO YOU REGISTER?

STEP 1

get a **LuxTrust** product and register your certificate at

📄 www.luxtrust.lu
(some banks provide this for free).

STEP 2

Set up a private space on
📄 www.myguichet.lu
and confirm your identity using your LuxTrust certificate and using a link sent by email.

EMERGENCIES

EMERGENCY SERVICES

- ☎ 112
- ➔ urgent medical assistance, fire, rescue, flooding.

POLICE

- ☎ 113
- ➔ thefts, burglaries, assaults or suspicious behaviour.

SOS VET

- ☎ (+352) 27 510 112

ON CALL FOR EMERGENCIES

- ➔ hospitals, medical centres, children's doctors, dentists, vets.

📄 <https://112.public.lu/fr/urgences/numerousuileset-gardes.html>

HEALTH & SOCIAL SECURITY

SOCIAL SECURITY OR CENTRE COMMUN DE LA SÉCURITÉ SOCIALE (CCSS)

- ➔ Provides your 13-digit social security number.
- ➔ Affiliation and co-insurance for spouses and children in Luxembourg.

☎ (+352) 401 411
✉ ccss@secu.lu

NATIONAL HEALTH FUND OR CAISSE NATIONALE DE SANTÉ (CNS)

- ➔ Manages health insurance and healthcare reimbursements.
- ➔ Doctor consultation and hospitalisation reimbursement of up to 88% for adults and 100% for children.

🏠 CNS Reimbursements, L-2980, Luxembourg (no stamp).

☎ (+352) 27 57 1

📄 www.cns.public.lu/en

REGISTER WITH A DOCTOR

📄 www.doctena.lu

FIND A MEDICAL SPECIALIST

📄 www.collegemedical.lu/Fr/Professionnels

FIND A VET

📄 www.lak.lu

OUT OF HOURS MEDICAL CENTERS

☎ (+352) 20 333 111

SANTE.LU

health information, patient associations, forms

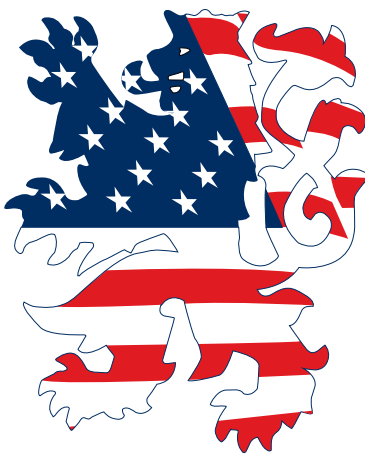
📄 www.sante.lu

The American Chamber of Commerce in Luxembourg, (amcham.lu), is Luxembourg's largest private Chamber of Commerce. We hold the U.S. Chamber of Commerce's franchise to be their affiliate in Luxembourg (think of us as being like a McDonald's hamburger restaurant franchise!). We are an active member of the Federation of American Chambers of Commerce in Europe (which gives us a pan-European network of partner organizations). At the same time, we are a local Luxembourg non-profit organization led by a local board of Directors chosen from among our Luxembourg Charter members.

We exist to provide the following four services:

1. Networking (in English)
2. Information about how Luxembourg works
3. Problem-solving (when our members see a need for improvements in local practices and policies)
4. Communication and advocacy with government decision-makers to ensure the needs of our members are given appropriate consideration.

We provide these services through 17 committees, digital webinars, a weekly digital newsletter, social media, our www.amcham.lu



website, our comprehensive **Doing Business in Luxembourg** book (now in its 4th edition, with the 5th edition currently in works), monthly ABAL lunches, evening cocktail seminars, large social events (like Thanksgiving and Christmas dinners, Summer BBQ, Carnival party, New Year's Reception...), and coming soon, a re-launch of our Newcomer orientation courses. Communication is critical to us, and we couldn't do it without the help of great partners like the Luxembourg Times.


Our membership includes a significant number of Luxembourg's most successful and respected companies. We are very proud to be a multi-national melting pot organization with 30% companies of US origin, 20% companies of Luxembourg Heritage and with the remaining 50% being companies from all over the world. We accept and welcome members with all passports and are fully committed to treating all members equally and always providing the highest quality services and support. Please contact info@amcham.lu to discuss joining our family of great members!



DRIVING

SNCA

driving licence, car technical inspection

 <https://snca.public.lu/en.html>

FEDAMO

for a list of car dealers who sell and lease cars

 <https://fedamo.lu/en/>


ACL

for vehicle breakdown cover


 <https://www.acl.lu/en/>

UTILITIES

GAS EMERGENCY

 (+352) 8007-3001

ELECTRICITY EMERGENCY

 (+352) 8002-9900

WATER EMERGENCY






switch off your mains tap (*basement or garage*) and contact your local water service (*usually listed on the municipality website*).

MOBILE & INTERNET PROVIDERS

-  www.post.lu
-  www.orange.lu
-  www.tango.lu
-  www.internet.lu
-  www.vo.lu (*internet only*)
-  <https://eltrona.lu>
-  www.sudstrom.lu (*internet and IPTV*)
-  www.telewafer.lu (*internet and TV*)



WASTE DISPOSAL AND RECYCLING




-  general waste.
-  glass waste in the city/organic and garden waste outside the city.
-  paper and cardboard waste.
-  outside the city for glass waste.
-  organic waste.

Valorlux blue or green bag recyclable plastic and tin/metal.


SICA Kehlen

 <https://sicaapp.lu/>

YOUR MUNICIPALITY OFFICES OR THE BIERGER CENTRE IN THE CITY FOR:


-  Certificate of residence
-  Registering to vote in elections
-  Water and local waste disposal

FIND YOUR LOCAL COMMUNE

 https://guichet.public.lu/en/citoyens/organismes/organismes_citoyens/administrations-communales.html

GOOD TO KNOW

COMPARISON WEBSITE


 www.letzcompare.lu


COMPARISON WEBSITE FOR ENERGY SUPPLIERS IN YOUR REGION


 www.calculix.lu

CITIZEN'S RIGHTS


Union Luxembourgeoise des Consommateurs Nouvelle

 (+352) 4960221

 info@ulc.lu

 <https://www.ulc.lu/fr/>

FINDING A NOTARY


 <https://www.notariat.lu/home>

FINDING A SWORN TRANSLATOR

 <https://www.traducteurs-interpretes.lu/en/annuaire/>

REQUEST A CRIMINAL RECORD EXTRACT

either from **MyGuichet** or

 casier.judiciaire@justice.etat.lu

eltrona.lu



GiGA CLEVER



GiGA Internet
1Gbit/s



GiGA Mobile
55GB

55€
/month

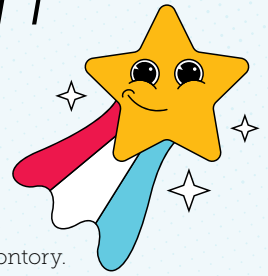
Internet + Mobile
Without commitment
All inclusive



The GiGA
Internet

HISTORICAL TIMELINE

FOR THE GRAND DUCHY OF LUXEMBOURG



963

Count Siegfried builds his castle on the strategically located Bock promontory.

1236 – 1244

Countess Ermesinde grants charters of freedom to Echternach, Thionville, and Luxembourg City, creating the country's first municipal authorities.



1320

John the Blind of Bohemia builds new fortifications.

1443

Philip the Good conquers Luxembourg which is ruled by the French House of Burgundy, the Spanish and the Austrian Hapsburgs, and the fortress continually expands.

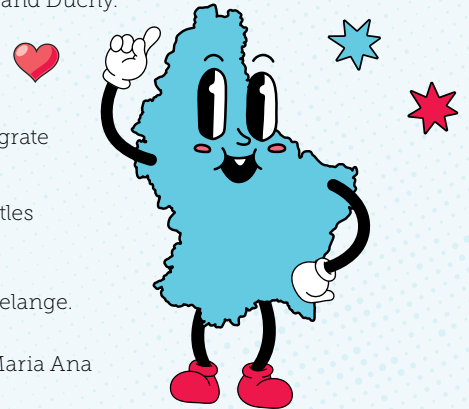


1815

Under the Congress of Vienna Luxembourg becomes a Grand Duchy.

1839

Treaty of London defines Luxembourg's borders.



1841 – 1891

Some 72,000 Luxembourgers (1/3rd of the population) emigrate to Argentina, Brazil, France and USA.

1867

Treaty of London makes Luxembourg neutral and dismantles her fortifications.

1880s

Large deposits of iron are discovered in Redange and Dudelange.

1891

Hereditary Grand Duke William of Luxembourg marries Maria Ana of Bragança from the Portuguese royal family.

Late 19th
century

Southern Italian immigrants come to work in the steel and iron industry, Germans from Saarland are brought in as steel plant managers and engineers.

1919

Grand Duchess Marie Adelaide abdicates in favour of her younger sister Princess Charlotte.

1940

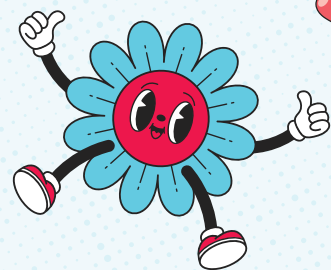
The number of Americans with Luxembourgish ancestry reaches 100,000, mostly living in the Midwest states.

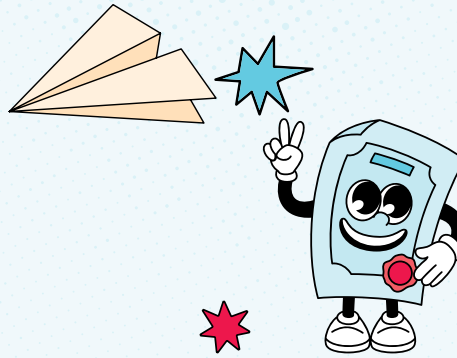
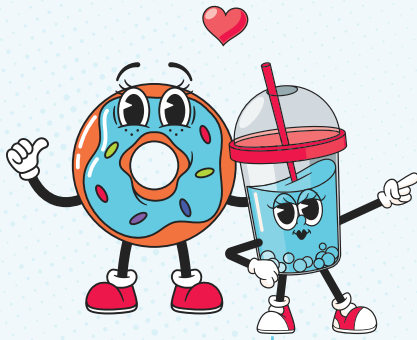
May 1940
– 1944

Luxembourg is occupied by Nazi Germany.

1948

Luxembourg forms an economic union with Belgium and the Netherlands – BeNeLux.





1949

Luxembourg is one of the 12 founding members of NATO.

1951

The creation of the European Coal and Steel Community, and the European Court of Justice both located in Luxembourg.

1957

The creation of the European Economic Community – Belgian, Germany, France, Italy, Luxembourg, and the Netherlands.

1950s

Goodyear and Dupont factories arrive in Luxembourg.

1964

Grand Duchess Charlotte abdicates in favour of her son Grand Duke Jean.

Late 1960s

The arrival of Portuguese immigrants (including Cape Verdeans) to work mainly in the construction industry.

1967

The NATO Maintenance and Supply Agency founded in Capellen. Sanem hosts the Warehouse Service Agency, the largest depot in Europe storing equipment for the US Air Force.

1960s & '70s

Luxembourg City becomes one of three cities to house the institutions of the European Union, together with Brussels and Strasbourg.

1980s

Rise of Luxembourg as a financial centre attracting French nationals to the country.

1981

The Portuguese population in Luxembourg reaches 30,000.

1984

Luxembourgish is established by law as the national language of the country with French and German as official languages.

1999

The Euro is introduced as the national currency of Luxembourg.

2000

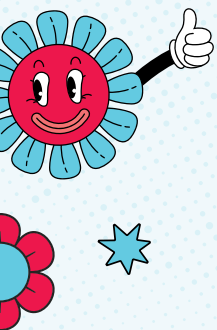
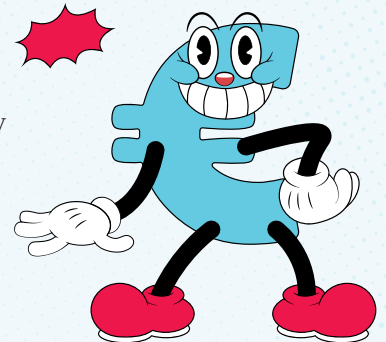
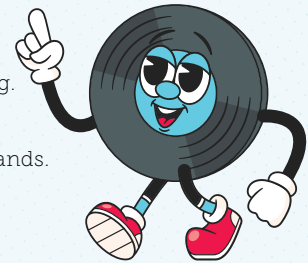
Crown Prince Henri becomes Grand Duke of Luxembourg, on the abdication of his father Jean.

2001

There are almost 60,000 inhabitants with Portuguese nationality living in Luxembourg.

2024

A total population of almost 672,050 residents, and 226,000 cross-border workers from the Greater Region.



LUXEMBOURG — A MELTING POT OF CULTURES

Whilst 170 nationalities have made Luxembourg their home, many keep in touch with their home-country heritage and language through local societies. We put the spotlight on a few of them:



All three countries take part in the annual CinEast film festival showcasing films from countries located in eastern Europe.

NORDIC COUNTRIES

Societies and clubs that organise language courses, cultural visits and community events:

- 📍 **Den Norske Forening i Luxembourg**
- 📍 **FINLUX Suomalaiset Luxembourgissa**
- 📍 **Swedish Women's Educational Association**
- 📍 **Nordic Women's Club**

SCANDINAVIAN CUISINE:

ScanShop

🏠 615 Rue de Neudorf,
Neudorf-Weimershof

Products from Denmark, Sweden, Norway, Finland and Iceland including Arctic squeaky cheese and marinated herring.

BALTIC STATES

- 📍 **Luxembourg-Latvia Association** runs the Meluzina choir, folkloric ensembles, a handicraft club and a school for learning language and culture.
- 📍 **Luksemburgi Eesti Selts** (*Luxembourg Estonian Society*) has a weekend school and library, craft and children's story circles, a women's folkloric dance group, and music ensemble.
- 📍 **Liuksemburgo lietuviu bendruomene** (*Luxembourg Lithuanian community*) organises cultural events and book reading for children.

EAST ASIA

- 📍 **Les Amis de la Corée** promotes cultural relations between Korea and Luxembourg with language lessons, concerts, and performances, plus ArtsKoCo which brings Korean artists to Europe.
- 📍 **Samahan Lux run** by Filipinos living in Luxembourg to raise money for interest-free micro finance in their home country, also promoting performance and visual arts.



📷 ©Shutterstock

➔ more info on page 20

PLACES TO GO

in Luxembourg City



Sofitel Luxembourg Le Grand Ducal - Bar L'Observatoire

Nestled in the heart of Luxembourg, L'Observatoire is much more than just a bar ; it's an immersive experience. L'Observatoire is renowned for its refined cocktails, meticulously crafted to awaken your senses.

40 Boulevard d'Avranches - 1160 Luxembourg



Sofitel Luxembourg Europe - Restaurant Radici

Radici invites you into authentic Italian cuisine in a bright and verdant setting. Chef and team offers artisanal fresh pasta and refined dishes elaborated with the best quality mediterranean products.

6 rue du Fort Niedergrünwald - 2226 Luxembourg



Mama Shelter Luxembourg - Restaurant, Rooftop, Bakery

Mama is the lifestyle experience in Luxembourg ! Let the fun be part of your stay and enjoy our Rooms and delicious homemade food and cocktails ! Mama is the perfect spot for all your life moments !

2 rue du Fort Niedergrünwald - 1616 Luxembourg



Novotel Suites Luxembourg - Boutique Gourmande

Our 24/24h 7/7d shop offers a curated selection of artisanal products, including gourmet food, handcrafted chocolates, premium wines, all sourced from the best Luxembourgish producers. We look forward to welcoming you !

13 avenue John F. Kennedy - 1855 Luxembourg



Novotel Luxembourg Centre - Restaurant Origine

Enjoy your time in our Origine restaurant ! We welcome you in a warm setting to taste local and gourmet cuisine, with a menu that evolves with the seasons. Enjoy our outdoor terrace during the sunny days.

35 rue du Laboratoire - 1911 Luxembourg



Novotel Luxembourg Kirchberg - Restaurant Dans Le Noir ? Luxembourg

Dans le Noir ? Luxembourg offers you the opportunity to taste gourmet, creative and seasonal cuisine in complete darkness, accompanied and served by unexpected guides.

6 rue du Fort Niedergrünwald - 2226 Luxembourg



AFRICA & THE MIDDLE EAST

- 🕒 **The Arab Association for Cultural Exchange (AACE)** seeks peace and integration through cultural and artistic exchange, inviting residents to discover Arabic arts through film screenings, exhibitions and musical events.
- 🕒 **Cercle Libanais** seeks to foster debate around social, economic and cultural issues in Lebanon and organises meetups and after-work events.
- 🕒 **Maison d' Afrique** is a reception area for people arriving from sub-Saharan Africa, providing training and language courses to help them integrate into Luxembourg.

OTHER ASSOCIATIONS

Turkuaz runs conferences, seminars and courses to allow residents to discover Turkish cuisine, art and sporting activities, and take language courses in Turkish and French.

Asociación Ecuador Para Todos promotes the country's history, culture and customs through social events for the community and the sale of traditional food.

Lëtzebuerg-Crna Gora is a Montenegrin non-profit group which celebrates the country's Independence Day and organises classical concerts or trips for their members to visit nearby cities.

LUkraine organises fundraising activities and supports refugees arriving from Ukraine. It works with sporting associations in Luxembourg and organises outings for Ukrainian refugee children.

Indian Association Luxembourg organises celebrations for Diwali and Holi, and a city festival for India Day.

CLAE is a non-profit association that recognises and promotes cultures resulting from immigration providing integration, language and citizenship classes, and supporting family reunification.



BAZAR INTERNATIONAL DE LUXEMBOURG

Founded: 1960
(official Asbl in 1967)

Number of countries taking part: 60

Date: 15-17.11. 2024

Location: LuxExpo The Box, Kirchberg

Number of volunteers: 1,500

Funds raised in 2023: €505,000

Charities that benefit: 48 charities worldwide

🏠 <https://www.bazar-international.lu/>

WHY GO?

Visit 60 countries around the world, shopping for a cause for Christmas decorations and gifts, art, jewellery, clothing, and bags and national delicacies. Taste cuisine from all corners of the globe, and listen to music or watch folk dancing.

📷 unsplash.com, shutterstock.com

In Luxembourg, we don't have the Tower of Pisa.
But we have excellent home insurance.



Thanks to Foyer and the newcomer's guide,
prepare your move to Luxembourg with
peace of mind. Download the guide at
foyer.lu/expats-luxembourg



Protecting you
for 100 years

CITY NEIGHBOURHOODS

from bohemian or historic to village charm.

VILLE HAUTE & GARE

UNESCO world heritage and central location.

	GARE	VILLE HAUTE
PROPERTY PRICES	€10-11,300 / sqm	€13-15,250 / sqm
BUS LINES	2, 4, 7, 9, 10, 13, 14, 18,-20, 22, 23, 27-29	2-4, 6, 8-11, 14-16, 18, 19, 21, 22, 31, 32
TRAM STOPS	Gare Centrale, Place de Paris, Place de Metz	Hamilius

FOOD & DINING

- ➔ Supermarkets at Hamilius and the central train station.
- ➔ Russian, East Asian, Indian, and Middle Eastern grocery shops.
- ➔ Biggest concentration of budget and Michelin-starred restaurants.

GREEN SPACES

- ➔ Edmund Klein Park and pirate ship playground.
- ➔ Pétrusse valley and skatepark.
- ➔ Pescatore Park with fountains.
- ➔ Kinnekswiss hosts fairgrounds and outdoor concerts.



📷 Gerry Huberty, ZM

CLAUSEN & GRUND

historical cobble-stoned streets with great nightlife.

	CLAUSEN	GRUND
PROPERTY PRICES	€9,500-13,500 / sqm	€12,500 / sqm
BUS LINES	9, 23, CN1	23

FOOD & DINING

- ➔ Rives de Clausen is a pedestrianised area filled with bars and restaurants.
- ➔ Grund is home to Scott's Pub, Oscar's Bar and the Michelin-starred Mosconi restaurant.

GREEN SPACES

- ➔ A green lung following the river connects the two quarters.
- ➔ A panoramic glass elevator links Clausen to Pescatore Park.



➔ more info on page 24

CREATE YOUR HOME

Developing
and Improving
**Custom-Made
Real Estate**
for over 35 Years



**AREND &
FISCHBACH**
REAL ESTATE DEVELOPER

35
YEARS
1989 2024

arend-fischbach.lu

LIMPERTSBERG

leafy art deco city suburb.

PROPERTY PRICES	€11-16,250 / sqm
BUS LINES	2, 4, 8, 19, 30, CN1, CN7
TRAM STOPS	Faïencerie, Theater



FOOD & DINING

- ➔ Cactus and Monop grocery stores, and organic wholefood at Alavita.
- ➔ Monthly market at Glacis selling fresh fruit and vegetables.
- ➔ Plenty of coffee places including Ready?!
- ➔ Social restaurant Chichel and Spanish tapas at *La Réserve*.

GREEN SPACES

- ➔ Sculptures, rose gardens, and a playground in Tony Neuman Park.
- ➔ Borders with the playground and forests of Bambësch.

BONNEVOIE

bohemian and multi-cultural melting pot.

PROPERTY PRICES	€9,000-12,250 / sqm
BUS LINES	2, 3, 5, 9, 23, 28, 29, CN2, CN3
TRAM STOPS	Dernier Sol, Lycée Bouneweg

FOOD & DINING

- ➔ Portuguese, Greek, Italian, South American and Indian speciality food shops.
- ➔ Two grocery stores, the organic food shop Alavita, and a halal butcher.
- ➔ Annual street food festival at Rotondes.
- ➔ Sunday brunch at Bouneweger Stuff, French cuisine at Le Laboratoire, and spicy food at the Bay of Bengal.

GREEN SPACES

- ➔ Space-ship themed playground at Kaltries Park, which has a giant chessboard and table tennis.
- ➔ Take the Godchaux walking circuit through the forest to discover the textile history.



 unsplash.com, Marc Wilwert



BERTRANGE, HESPERANGE & WALFERDANGE

village charm with plenty of amenities.

	BERTRANGE	HESPERANGE	WALFERDANGE
PROPERTY PRICES	€7,900-13,700 / sqm	€10,200-11,200 / sqm	€7,000-10,400 / sqm
BUS LINES	5, 6, 8, 10, 16, 655, 850	3, 5, 23, 24, 28, 29, 33 and 18 RGTR regional buses	11, 26, 111, 112, 85
TRAIN STATIONS	Strassen/Bertrange station to the city or Mamer and Arlon (BE)		Walferdange station to the city and north via Mersch and Clervaux

FOOD & DINING

- ➔ Cheese specialist Épicerie du Coeur de Meule and Brasserie B13 next to the park in Bertrange.
- ➔ Hesperange's famous Portuguese restaurant, Chez Isabel Bacano, serving its signature tiger prawns.
- ➔ Gourmet food at Hostellerie Stafelter, and hand-made chocolates at *Chocolats du Coeur* in Walferdange.

GREEN SPACES

- ➔ Bertrange's central playground and Les Thermes leisure centre.
- ➔ Hesper Park with a sculpture trail and summer beach club.
- ➔ Pidal leisure centre and spa, and two dog parks in Walferdange.

ESCH-SUR-ALZETTE, MERSCH AND REMICH

commuting from other towns.

	ESCH-SUR-ALZETTE	MERSCH	REMICH
PROPERTY PRICES	€5,500-8,600 / sqm	€16,300-8,200 / sqm	€6,200-9,500 / sqm
BUS LINES	TICE 1-5, 12, 13, 15, 17, and RGTR 306, 603, 604, 641, 641	111, 112, 119, 231-234, 824, 921, 931-934, 936, 937s	341, 342, 403, 411-413, 431, 432, 550
TRAIN STATIONS	1 station in Esch-sur-Alzette and 2 in nearby Belval with trains to the city	Trains running to the city and north to Diekirch and Wiltz	

FOOD & DINING

- ➔ Japanese restaurant Nonbe and haute cuisine at Postkutsch in Esch-sur-Alzette.
- ➔ Classic local recipes served at Beim Alen Tuurm in Mersch, or funky cocktails and burgers at Fabrik.
- ➔ Remich has numerous restaurants serving locally fried fish along Quai de la Moselle.

GREEN SPACES

- ➔ Esch-sur-Alzette boasts the central Park Gaalgebierg with a playground and Escher Déierepark, home to goats, deer, highland cattle, rabbits and racoons.
- ➔ Mersch's 13-hectare park incorporates a lake, playground and lookout tower.
- ➔ Walk the 3km riverside path on Remich's esplanade with sculptures, playgrounds and information panels.



©LMIH/LFT_MelanieMaps Yemat

Comfort & ease with your *ready-to-live-in* home



Non-contractual information & images



Kopstal



Schouweiler



Luxembourg-Belair



Luxembourg
Montée Pilate



Mamer

Our *immediately available* apartments and houses are waiting for you!

You can move straight into your new house or apartment, fully equipped,
with no worries and no loss of time:

- New for old prices!
- Prime location near Luxembourg City
- Ten-year warranty
- Tax benefits

An ideal solution for occupants... and investors.



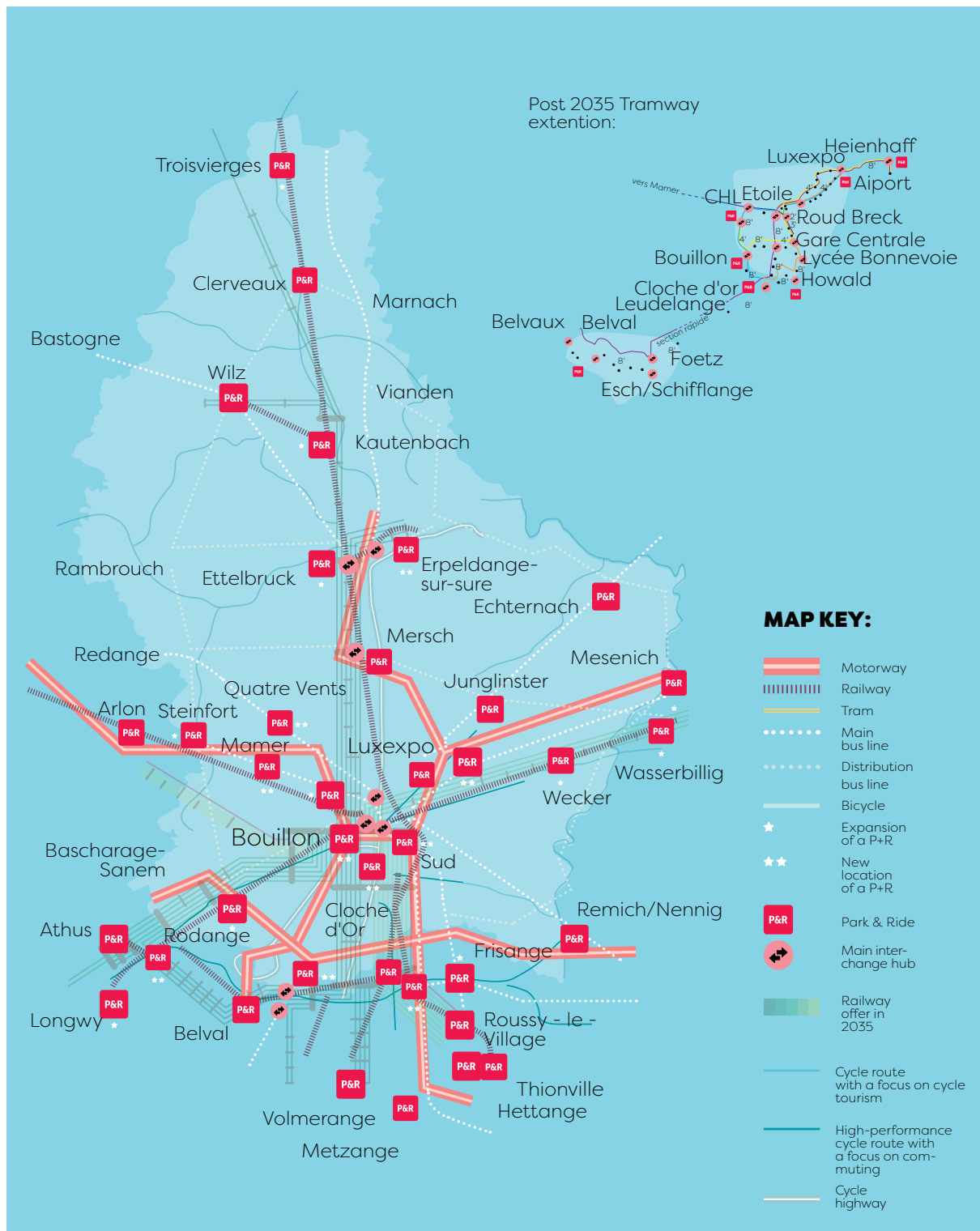
Discover the **ready-to-live-in apartments or houses** near you,
in Kopstal, Schouweiler, Luxembourg-Montée Pilate, Mamer, Ermsdorf,
Luxembourg-Belair... at www.thomas-piron.lu or via the QR code opposite.



Info: **34 18 141** | accueil@thomas-piron.eu

GETTING AROUND

Free transport on the bus, train, and tram, or try the bicycle rental networks Vel'Oh and Vël'Ok.



Source of visuals: National Mobility Plan 2035

BUS

- ➔ State-run buses 2-33 cover the districts of the city and the airport.
- ➔ RGTR buses to all localities in Luxembourg, TICE operating in Esch-sur-Alzette.
- ➔ Night buses travel from the city to towns and villages on Friday and Saturday up to 3.00-4.00.
- ➔ Municipality mini-buses for key local destinations such as shopping centres.
- ➔ Nightrider minibus for door to door transport at night (annual fee charged).

TRAIN

- ➔ Train lines to Dudelange, Esch-sur-Alzette, Kleinbettingen, Pétange, Rumelange, Troisvierges, Wasserbillig and Wiltz.
- ➔ Services to the Greater Region including *Arlon* (Belgium), *Trier* (Germany) and *Metz* (France).
- ➔ Travel within Luxembourg is free, but cross border travel requires a ticket.
- ➔ Pfaffenthal station linked to the Kirchberg plateau via a funicular.
- ➔ Direct trains to Paris, and connections to Brussels and Strasbourg.

TRAM

- ➔ Several stops between LuxExpo in Kirchberg to Cloche d'Or, via the city and central railway station.
- ➔ Extensions in progress to the airport and the national stadium.
- ➔ First departure 4.22 and last departure 00.40 Monday to Saturday (with a later start time of 5.05 on Sunday).

BICYCLE

VEL'OH

- ➔ Vel'oh has 94 stations in the city and 55 in key towns outside the city (Strassen, Mamer, Capellen, Leudelange, Bertrange, Niederanven, Walferdange).
- ➔ All bikes are equipped with electrical assistance.
- ➔ You can pick up and drop off at any cycle station (subject to spaces).
- ➔ Subscriptions cost €2 for one day, €5 for three days, and €18 annually.
- ➔ The first 30 minutes rental is free, then it is €1 per hour up to €5 in a 24 hour period.

📄 www.myveloh.lu/en

VÈL'OK

- ➔ Free use of some 700 traditional cycles and e-bikes spread over 100 stations in 9 municipalities.
- ➔ Usage limited to two hours per ride.
- ➔ Stations in the municipalities of Bettembourg, Differdange, Dudelange, Esch-sur-Alzette, Kayl, Mondercange, Rumelange, Sanem and Schifflange.
- ➔ Register for an mKaart with a Vèl'Ok regional option at participating municipalities or online

📄 www.velok.lu

CAR SHARING

- ➔ Klaxit is a carpooling app for Luxembourg, Belgium, France and Germany.
- ➔ Carloh is a car-sharing scheme in the capital to borrow a small, medium or large car, paying a monthly subscription and hourly fee.
- ➔ Flex is another car-sharing scheme which operates in Bertrange, Mamer, Hesperange, Strassen, and Walferdange.

📄 www.carloh.lu/en

Need to plan a trip?

📄 www.mobiliteit.lu/en/plan-a-trip/

A GUIDE TO ADOPTING A CAT OR DOG

Everything you need to know about adopting a pet in Luxembourg from animal shelters and breeders, to registration, microchipping and where to get pet supplies.

REGISTERING YOUR DOG OR CAT

- ➔ Dogs must be registered and microchipped within one month of adoption.
- ➔ Registered vets can microchip and vaccinate against rabies.
- ➔ You must register your dog at your local municipality offices. You will need a vet's certificate stating the breed, proof of vaccination against rabies, and liability insurance.
- ➔ Dog owners pay dog tax to the local municipality.
- ➔ Cats must be microchipped but not registered.
- ➔ Both cats and dogs should have a passport. Rescue shelters provide European pet passports upon adoption, which state the vaccinations the animal has had.

RULES IF YOU BRING YOUR PET FROM OVERSEAS:

📄 www.pettravel.com/immigration/Luxembourg.cfm

WHEN TO KEEP YOUR DOG ON A LEAD

In built up areas, public car parks, sports grounds, children's play parks, on public transport, and on some forest paths (indicated with a sign).

WHAT TO DO IN AN EMERGENCY

SOS Vet

☎ (+352) 27 510 112
📄 www.sosvet.lu/

Association of vets

📄 www.lak.lu/fr/lak/emergency

ADOPTING A RESCUE PET

- ➔ Consider if your living conditions are suitable, for example you have a garden.
- ➔ Visit a pet shelter or rescue foster family to build a relationship with your future pet.
- ➔ Adoption requires proof of address and ID, and you may be charged a fee for microchipping, sterilization, and vaccinations.



ANIMAL SHELTERS

SOS Animaux,

🏠 58 rue de l'Avenir

Déierenasyl,

🏠 6 boulevard de Kockelscheuer

Asile pour animaux Dudelange,

🏠 45 rue de la Forêt

Escher Déiereschutz SEPA,

🏠 121 rue Bourgrund

Schëfflenger Déiereschutz- veräin shelter,

🏠 rue de Hédange

SRPA Arlon,

🏠 351 route de Luxembourg
(Belgium)

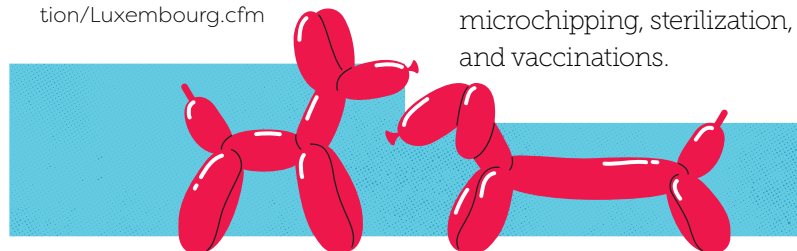
SPA Thionville,

🏠 101 chemin des Mineurs (France)

CAT AND DOG BREEDERS

📄 <https://luxcatclub.lu/>

📄 www.eurobreeder.com/breeders/luxembourg_dog_breeders.html



📷 @Sissy Mondloch

➔ more info on page 31

LIVE

WORK

FOOD

LEISURE

SHOPPING

CLO
CHE
D'OR
LUXEMBOURG

CHOOSE NEW URBAN LIVING!

STUDIOS, 1-2 & 3 BEDROOMS APARTMENTS FOR SALE

DELIVERY LAST QUARTER 2024

EXCLUSIVE REAL ESTATE AGENTS

AXENTO
IMMO

28 85 021
WWW.AXENTO.LU

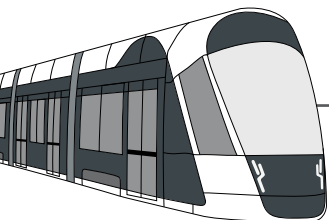
IMPAKT
real estate

28 55 501
WWW.IMPAKT.LU



VISITE 3D

WELCOME TO THE TRAM!

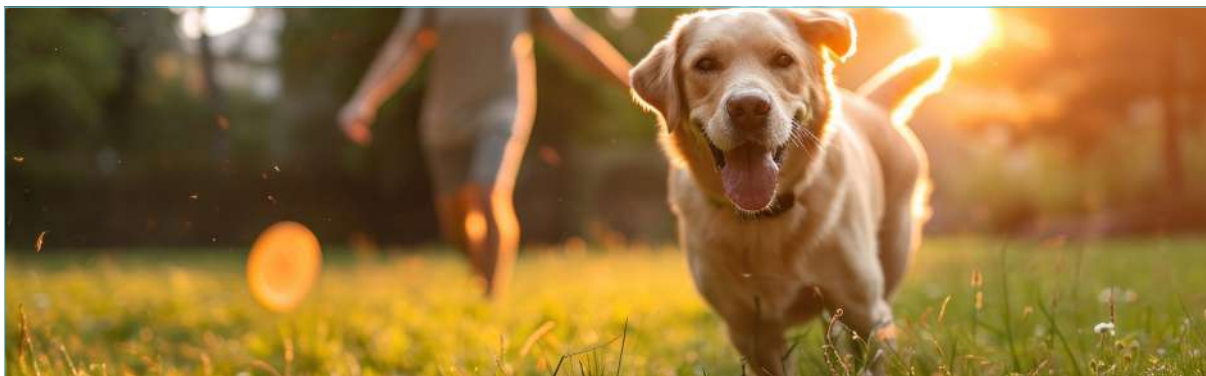


In **10** minutes
Central station

In **15** minutes
City center

In **25** minutes
Philharmonie
Kirchberg

In **45** minutes
Findel airport



PET FOOD & ACCESSORIES

Fressnapf has stores across Luxembourg and sells pet food and accessories, beds and toys.

Fruops in Colmar-Berg has pet food and accessories and it makes home deliveries.

Paws-up is an online shop selling dog and cat food, grooming products, leashes, bowls and blankets.

Asile pour Animaux in Dudelange has second-hand cat and dog accessories.

Josy Welter stocks pet supplies and you can also buy rabbits, mice, gerbils, guinea pigs and fish together with tanks.

Happy Paws in Weiler-de-la-Tour has food for cats and dogs, and stock accessories.

Muppe Palais in Kayl has dog beds and clothing for dog walkers.

Boutique J Christnach-Jungblut has pet food, leashes, collars and pet toys.

www.zooplus.de

sells low-cost pet food and accessories and delivers to Luxembourg.

DOGGY DAY & HOLIDAY CARE

www.catsitters.lu

www.zare-schlass.lu (dogs)

www.lux-pets.com

<https://www.facebook.com/waggingtailsluxembourg/>

www.pawshake.lu/doggy-day-care/luxembourg

www.petbacker.com/s/dog-house-sitting/luxembourg

DOG-FRIENDLY RESTAURANTS

- ➔ Café Villa (Luxembourg City)
- ➔ Kaale Kaffi (Luxembourg City)
- ➔ Oscar's Bar (Luxembourg City)
- ➔ Le 18 Bar (Luxembourg City)
- ➔ The Pyg (Luxembourg City)
- ➔ Brasserie Schuman (Luxembourg City)
- ➔ Café and Restaurant Bei der Giedel (Lasauvage and Fond-de-Gras)
- ➔ Bistro Martbusch (Berdorf)
- ➔ Elch Club (Bertrange)
- ➔ An der Villa (Steinfort)

DOG PARKS

Bereldange, Helmsange, Bonnevoie, Bertrange and Schuttrange have dog parks whilst Hesper Park and Merl Park have off-leash areas.

You can find a full list of canine friendly zones in the city at

<https://www.vdl.lu/en/visiting/leisure-and-nature-activities/routes-and-trails/walking-your-dog>



Sissy Mondloch

Join the

POP

Connection



The new combined
Mobile & Internet offer

pop.lu



LUXEMBOURG TRADITIONS

Join in the fun and ceremony of the special traditions observed in Luxembourg from bonfires at Buergbrennen and parades at Fuesent, to fireworks on the eve of Nationalfeierdag, and gifts on Kleeserchersdag.

6 JANUARY

DRAÏKINNEKSDAG

Celebrate the feast of the Epiphany with a frangipane-filled, paper crown-topped cake. If your slice contains the porcelain figurine or fève, you will be crowned king or queen for the day.

2 FEBRUARY

LIICHTMËSSDAG

The children of Luxembourg take to the streets to celebrate Candlemas Day carrying lanterns or Lichteengelcher, knocking on doors and singing *Léiwer Herrgottsblieschen*, in return for treats.



Candlemas
UNTIL
Ash Wednesday
FUESENT

Don fancy dress, feast on donuts and join the Fuesgecken, or Carnival revellers at a parade or masked ball. The Moselle town of Remich carries a straw man through the streets before setting him alight, whilst Diekirch has the largest Carnival cavalcade.

First Weekend OF Lent

BUERGBRENNEN

Bonfires are lit throughout Luxembourg to banish pesky winter spirits and welcome spring. The pyres are known as *buergen* and are lit by children who carry torches in a *Fakelzuch* procession.

DID YOU KNOW?

You are rejected by your sweetheart if you get an empty basket at Easter, hence the Luxembourgish expression to be dumped by your partner “*de Kuerf kreien*” (*to be given the basket*).



Fourth Sunday OF Lent

BRETZELSONNDEG

Men give their sweetheart a sugar and almond coated pretzel. If their love is requited they'll get a basket of eggs on Easter Sunday. On leap years the roles are reversed.

©LMIH/Focalize, Shutterstock

Maundy Thursday TO Easter Sunday

KLIBBEREN

Luxembourg's church bells fly to Rome on Maundy Thursday to confess their sins to the Pope. Without the bell chimes, children are called upon to break the silence using rattles – *Klibberen* roughly translates in "to go rattling."

Easter Monday

ÉMAISCHEN

A 19th century tradition celebrated by the potter's brotherhood at St Michael's church in the city, and in the village of Nospelt, where little clay bird whistles known as Péckvillchen are sold at special markets.



DID YOU KNOW?

The Klibberen or rattles were used by lepers in the Middle Ages to announce their arrival and make sure citizens kept a healthy distance.



1 MAY

MEEKRANZ

Make a traditional May wreath to hang on your door, from young branches, and sample Maitrank, a concoction of white wine and sweet woodruff.

Fifth Sunday AFTER Easter

OKTAV MARKET AND PROCESSION

Head to the Oktav markets at Place Guillaume II or Place de la Constitution and join the street procession which dates to the 17th century in which the statue of Our Lady, Mary, comforter of the afflicted (*usually displayed at the Notre Dame Cathedral*) is carried through the streets.



➔ more on page 36



Whit Tuesday

SPRANGPRÉSSËSIOUN

A UNESCO-recognised, ancient dancing pilgrimage to honour St Willibrord, who founded Echternach Abbey in the 7th century.

23 JUNE

NATIONALFEIERDAG

A 19th century tradition celebrating the Grand Duke's birthday. The date in June was made a statutory holiday in 1948, with a procession and street party on the eve of National Day, rounded off with a spectacular firework display.

National Day sees the Grand Duke award honours to citizens, and is followed by a military parade, during which the national anthem *Ons Heemecht* is sung.

23 AUGUST – 11 SEPTEMBER

SCHUEBERFOUER

A unique Luxembourgish celebration with a 680-year-old history, started by John the Blind. Shepherds herd sheep through the streets whilst musicians play the *Hämmelsmarsch* or Mutton March to open the two-week funfair with thrill rides and culinary specialities such as whiting fried in beer batter.



20 OCTOBER

MANTELSONNDEG

Stores open exceptionally on a Sunday with discounts on winter coats. The tradition began when people bought heavy coats to keep them warm when they attended family graves for All Saints Day.

6 DECEMBER

KLEESERCHERSDAG

On the eve of 6 December children put out their slippers in the hope of a reward from Kleeschen, also known as Saint Nicolas. He wears a red mitre, carries a staff, and is accompanied by a donkey and the mean Houséker who gives naughty children a flick of his switch made from branches. *Boxemännchen*, doughy gingerbread men, are traditionally eaten on 6 December for breakfast.



31 OCTOBER & 1 NOVEMBER

D'TRAULIICHT & TOUSSAINT

D'Trauliicht Brennen is an Ardennes tradition carried out on Halloween, where beets are carved with scary faces lit by a candle. Lanterns were placed outside cowsheds and barns to prevent livestock getting illnesses brought by bad spirits, and on window ledges to protect the family from the souls of the dead.

Toussaint or All Saints is when Luxembourgers clean their ancestral tombs and put fresh flowers on graves.

Aide et conseil pour les consommateurs en Europe



Centre Européen des Consommateurs Luxembourg



LE CENTRE EUROPÉEN DES CONSOMMATEURS LUXEMBOURG OFFRE GRATUITEMENT

INFORMATION | CONSEIL | ASSISTANCE

POUR LES CONSOMMATEURS EN EUROPE

CECLUXEMBOURG.LU

INFO@CECLUXEMBOURG.LU

+352 26 84 64 - 1

LE CENTRE EUROPÉEN DES
CONSOMMATEURS GIE LUXEMBOURG EST FINANCÉ PAR :

Cofinancé par
l'Union européenne



LE GOUVERNEMENT
DU GRAND-DUCHÉ DE LUXEMBOURG



TOP SPOTS TO FURNISH YOUR HOME ON ANY BUDGET

Need to kit out your home or just looking for a unique vintage piece? This list has somewhere to suit every budget.

LOW-COST

Maisons du Monde

🏠 Bertrange, Pommerloch, Sterpenich (BE), Thionville (FR)

Furniture for all rooms, including lamps, rugs, mirrors and soft furnishings.

🌐 www.maisonsdumonde.com/LU/fr

H&M Home & Zara Home

🏠 Cloche d'Or

Sheets, crockery, and soft furnishings.

🌐 www2.hm.com/fr_be/home.html

🌐 www.zarahome.com

IKEA

🏠 Arlon (BE)

International brand perfect for all rooms in the house, including lighting and accessories.

🌐 www.ikea.com/be/fr

Möbel Martin

🏠 Konz (GER)

Stocking Scandinavian brands with items for the kitchen, living and bed rooms and garden.

🌐 www.moebel-martin.de



📷 ©Shutterstock

MID-RANGE

Abitare Living and Kids

🏠 Junglinster

Bespoke furniture such as kids' beds, but also sofas, lighting and garden furniture.

🌐 www.abitare-living.lu

🌐 www.abitare-kids.lu

Meubles Mich-Gillen

🏠 Luxembourg City

Fifty brands and 100 years' experience in furniture for all corners of the home.

🌐 www.mich-gillen.lu

DESIGNER & BESPOKE

BoConcept & Roche Bobois

🏠 Bertrange

Two designer concept stores to help you create your dream interior.

🌐 www.boconcept.com/fr-lu

🌐 www.roche-bobois.com/fr-LU

Reed & Simon

🏠 Luxembourg City

Sumptuous outdoor furniture but plenty of designer brands for inside your home.

🌐 www.reedandsimon.com

R&R Interior

🏠 Luxembourg City & Strassen

Interior designers on hand to help you create the perfect space.

🌐 www.rinterieur.lu

VINTAGE & SECOND-HAND

Oddhaus

🏠 Luxembourg City

Offbeat vintage furniture from the 1950s to 1980s.

🌐 www.oddhausvintage.lu

Vintage Home & More

🏠 Beckerich

Vintage items brought to life by an artist to make them unique.

🌐 www.vintagehomemore.lu/en

Okkasiounsbutikk

🏠 Differdange

Fully repaired second hand furniture that can be delivered.

🌐 www.okkasiounsbutikk.lu

Vintage Mood

🏠 Livange

Cut-price second-hand crockery and coffee sets, and second-hand furniture including lamps.

🌐 www.facebook.com/vintage.mood.lux/

Nei Aarbecht

🏠 Helmdange

Social enterprise with a warehouse that can provide items for all the rooms in your house.

🌐 <https://cnds.lu/nei-aarbecht/>

Home

In life,
you can't plan everything.

Sometimes it works. Sometimes you learn.

We also insure unexpected surprises.

baloise.lu/home



baloise

HEALTH & WELLBEING

For many people, health and well-being is one of the most important aspects to a happy life.

Exercise plays a key role in enriching our lives, improving our heart rates, flexibility, muscle-tone and general wellbeing.

Whilst joining a gym or yoga class is a great way to get and stay fit, spending time in nature or outside can also do wonders for our mental state.

RUNNING AND WALKING ROUTES

This section takes two ideas – **walking and running**, and gives you suggested trails and routes. If you're just getting started with your fitness, read our list of seven walking trails that are less than 7km.

If you usually go for a run, how about swapping your regular route for the 10km run-seeing loop to take in the city's most spectacular sights, or try the shorter Schläifmillen circuit, for a paced jog past the city's former textile area by the river and close to the forest. We also list running groups if you prefer to exercise in company.



WHY NOT TAKE UP A NEW SPORT?

For some, the motivation to exercise comes with **team sports** or the opportunity to improve their sporting skills in martial arts, archery or fencing.

Luxembourg has a number of local sports clubs where you can join a football, basketball, rugby or cricket team, or try your hand at climbing, padel, or pickleball.

We also list associations that provide sport for people with physical or mental disabilities, and put the spotlight on women's teams.





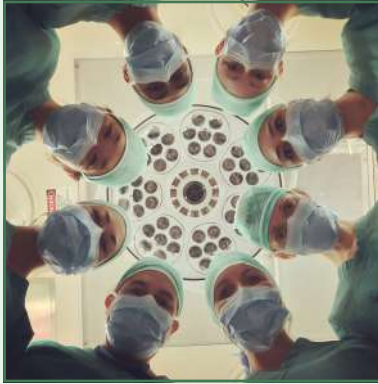
A GUIDE TO **HOSPITAL CARE**

Get to know the Accident and Emergency procedure, inpatient hospital stays and the costs, and familiarise yourself with our handy map of the main hospitals in Luxembourg.



A GUIDE TO HOSPITAL CARE

Hospital care including A&E, surgery and outpatient treatment in Luxembourg.



WHO IS ENTITLED TO HOSPITAL TREATMENT?

All residents of Luxembourg are entitled to emergency healthcare.

Non-emergency care is covered by the National Health Fund known as *Caisse Nationale de Santé (CNS)*, if you or your partner/spouse pay social security contributions.

A&E

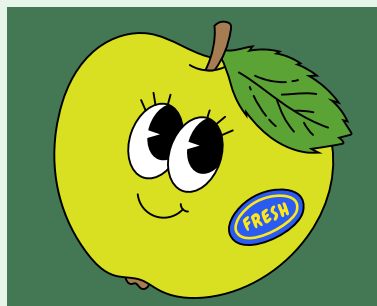
Go directly to the *Cas d'Urgence* or emergency department at a hospital with your ID, social security card, private health insurance or European Health Insurance Card. Payment for treatment may be requested on site, or invoiced later, so keep receipts for reimbursement.

GENERAL ADMISSION

You usually need a referral from your doctor or a medical specialist to be admitted to hospital. The speed of treatment in Luxembourg is very favourable compared to other EU countries.

INPATIENT/ OUTPATIENT

The CNS covers both types of treatment. For inpatient treatment you will generally share a room with 1-2 other people, or pay extra for a private room (*sometimes covered by private insurance*).



COSTS AND REIMBURSEMENT

CNS card holders will be charged €12.75 for day care and €25.50 for overnight stays. The CNS reimburses 80-100% of treatment, medical care, medication, tests, travel costs and medical devices or aids, plus rehabilitation costs and maternity care.

ON-CALL MEDICAL CENTRES

Open weekdays from 20.00 to midnight and weekends from 8.00 to midnight

☎ (+352) 20 333 111

Luxembourg City

🏠 23 Val Fleuri

Esch-Belval

🏠 3-5 Avenue du Swing

Ettelbruck

🏠 110 Avenue Lucien Salenty

➔ more on page 44



„I am so grateful to Luxembourg Air Rescue for bringing me back after my accident while travelling abroad. I am really glad to be a member.“

Jane M.,
expat living in
Luxembourg

**BECOME
A MEMBER
FOR ONLY
0,20€/DAY**



**MEDICAL EMERGENCY WHILE ABROAD?
LUXEMBOURG AIR RESCUE BRINGS YOU BACK!**

FROM ANY PLACE IN THE WORLD.



info@lar.lu

www.lar.lu

(+352) 48 90 06

ACL

Your assistance in all circumstances

We are there for you!

In a world where mobility is synonymous with freedom, we develop practical services to meet all your needs, wherever you are.



24/7 assistance

Breakdown service for your vehicles in Luxembourg and Europe



Organized trips

Negotiated prices for our members



Mobility services

Rental, technical diagnostics and advices



Partner benefits

Reduced prices thanks to over 75 exclusive advantages




060824EN

Join the Club on acl.lu

SEVEN CIRCULAR TRAILS LESS THAN 7KM

Get to know Luxembourg's natural beauty on one of seven circular trails, all less than 7 km long. If you're not an experienced hiker, try these fairly gentle trails to discover the areas of outstanding natural beauty in the Grand Duchy, from forests and lakesides, to vineyards and castles.




LIEFRANGE

-  5.3km
-  car park south of the village
-  cross the floating footbridge to the Lultzhausen Youth Hostel

The route follows the shoreline of the Upper Sûre River before entering the forest with a steep uphill to cornfields.




NOMMERN I

-  5.3km
-  Camping Nommerlayen
-  Camping Nommerlayen (in season)

One of many Mullerthal trails that passes unusual rock formations, including natural narrow passage-ways in the rocks.

BEAUFORT

-  5.72km
-  Parking Këppeglee
-  Hostellerie de Beaufort (in the village)




A magical trail in the Mullerthal region that follows the River Halerbaach through a shaded forest before an uphill ascent to the Beaufort Plateau. You can visit Beaufort Castle afterwards.

ROLLINGEN

-  6.1km
-  Rollingen Church, Rue de Luxembourg
-  Sanhe Restaurant

Follow a stream into the forest and past the Bildchen rock grotto, before ascending for amazing views of the valley.

TUNTANGE

-  6.8km
-  Peter & Paul church, Rue de Luxembourg
-  Snack em den Eck (only open weekdays)




Head south through the fields past the Chapel of Scheidel and into the valley of Eisch. The trail goes via Bour with its pretty windmill-filled gardens and back to Tuntange.

WORMELDANGE

-  3.2km
-  Caves Poll-Fabaire
-  Restaurant Koeppchen

A stunning viticulture route that passes the Koeppchen vineyards, then loops to St Donat's Chapel, with great views across the Moselle to Germany.

SANDWEILER

-  5.2km
-  Rue Dicks (by the cemetery)
-  Sandweiler Stuff

Head into the forest crossing the Rottsgronn to reach the Herel clearing and the picturesque valley of Birelgronn, before climbing back towards the Kundselskopp Plateau.

GUIDED TOURS

*Visit Luxembourg
City*

luxembourg

my city · ma ville · meng stad



LUXEMBOURG CITY TOURIST OFFICE

*your partner
to discover the capital*

How about a compact overview on our classic City Promenade tour? Or maybe you'd like to focus on a specific theme? Architecture, UNESCO World Heritage and Europe are just a few examples. For the youngest explorers, we offer adventure formats suitable for children. Best of all, you're totally flexible. You can join one of our guided tours or book a personal guide for your group.



We are happy
to advise on
all options!

30, Place Guillaume II · L-1648 Luxembourg
T. (+352) 22 28 09 · touristinfo@lcto.lu · luxembourg-city.com

luxembourg
city tourist office

SCENIC RUNNING ROUTES TO TRY

Fancy a change to your usual circuit? Why not try these classic routes or join a running group to make friends and keep motivated.



10K "RUN-SEEING" LOOP

Want to catch some of the capital's most iconic sights whilst you run? Then take this loop that starts at the Independent Café and travels to the Adolphe Bridge before taking in both the Pétrusse and Alzette river paths.

There's a stamina-testing steep climb up Pfaffenthal, with a final push past the Grand Ducal Palace before returning to the start point.

Join the group: FatBetty.Run on **Thursday evenings at 18.45** for a **5km or 10km run**.

www.FatBetty.Run

BAMBËSCH TRAILS

Leafy forest tranquillity close to the city centre (*and accessible by bus 33*), you can opt for several running trails that are 4.6km to 7.5km.

The 5.5km trail has 18 separate challenges including log lifting to build muscle.

Join the group: InterNations Running group meet **every few months on Tuesdays at 19.00** for a **10km run**.

www.internations.org/activity-group/1274/activities

SCHLÄIFMILLEN FITNESS TRAIL

At 2.8km, this Bonnevoie-located fitness trail is perfect for an after-work run. Reach it via bus line 5 with the start point near the allotments on Rue Anatole France, where the trail descends towards Gantenbeinsmillen following the River Alzette towards Schläifmillen before ascending a staircase to the starting point.

Discover the trail:

www.vdl.lu/en/visiting/leisure-and-nature-activities/routes-and-trails/exercise-and-cross-country-trails/schlaifmillen

TRACES OF VAUBAN TRAIL

This 12.4km route, originally part of the DKV Urban Trail, starts beneath Gëlle Fra at Place de la Constitution. Run through the old town and Pfaffenthal to the European quarter and down to Clausen, before continuing along the Alzette back to the start point. On the way, you can discover traces of fortifications built by Vauban.

Discover the trail:

www.alltrails.com/trail/luxembourg/luxembourg/traces-de-vauban



DISCOVER

LUXEMBOURG'S HOSTELS

LOOKING FOR
AFFORDABLE ACCOMMODATION
WITH **MODERN FACILITIES**?
WOULD YOU LIKE TO ACCOMMODATE
YOUR GUESTS IN A **COMFORTABLE &
AFFORDABLE WAY**?
OR ARE YOU LOOKING FOR A **VARIETY
OF ACTIVITIES** FOR ALL AGES?

OUR HOSTELS
IN LUXEMBOURG ARE THE PERFECT
PLACE FOR YOU!



WHAT WE OFFER:

- Comfortable and affordable rooms for families, groups and individuals.
- Private rooms are also available for extra comfort.
- Quality facilities and stylish atmosphere for a pleasant stay.
- **Varied activities:** Climbing, indoor playground, bowling alley, water sports, hiking or cycling - there's never a dull moment!
- Celebrate your child's birthday at a hostel thanks to our wide range of unforgettable birthday packages.
- Enjoy great food in our Melting Pot restaurants - there's something for everyone!



Experience a new kind of accommodation and activities in Luxembourg. Whether you are an adventurer, a nature lover or a bon vivant, we have something for everyone. Our hostels are open to everyone - no membership required.

Experience 
unforgettable adventures
& create lasting memories!



YOUR GATEWAY
TO UNFORGETTABLE
EXPERIENCES!



Youth Hostels Luxembourg NPO
(+352) 26 27 66 200
info@youthhostels.lu
youthhostels.lu

BOOK
DIRECT



→ youthhostels.lu

Follow us:     

#youthhostelsluxembourg

JOINING A SPORTS CLUB

From fencing to football, or cricket to capoeira, there is a club or association you can join in Luxembourg for almost every sport.



INCLUSIVE SPORTS

Got a neurodivergent or disabled family member who's sporty?

- ➔ **Sport for All in Esch-sur-Alzette** has adapted sports activities including multisport, Baskin, and adapted football at the Omnisports Centre Henri Schmitz.
- ➔ **ZAK in Luxembourg City** runs sporting activities including basketball, swimming, fitness and walking for people with intellectual disabilities.
- ➔ **AutiSport run by the Luxembourg Autism Foundation** has structured sport activities for children, teens and adults, with lessons taking place from September to July in Bridel.

WHERE TO FIND LOCAL SPORTS CLUBS

- ➔ **Archery Federation Luxembourg** lists all the local clubs
www.flta.lu
- ➔ **Badminton Federation of Luxembourg** lists all the local clubs
www.badminton.lu
- ➔ **Luxembourg Federation of Basketball** (local men's, women's and youth teams)
www.luxembourg.basketball
- ➔ **Luxembourg Federation of Boxing** lists local clubs
www.boxe.lu
- ➔ **Groupe Alpin Luxembourgais** Climbing training both indoor and outdoor with
www.groupealpin.lu
 & **Boulder Klub Lëtzebuerg**
www.bkl.lu/en
- ➔ **Cricket teams** (men's, women's and youth)
www.luxembourgcricket.org/communities-cc
- ➔ **Luxembourg Curling** has regular practise sessions in season at the Kockelscheuer ice rink
www.curling.lu
- ➔ **ProVelo** organises cycle tours and trips
www.provelo.lu/en whilst the **Federation Sport Cycling of Luxembourg** lists local associations
www.fscl.lu
- ➔ **The Sub Aqua Club** has a diving club
www.sacl.lu
- ➔ **Grand Ducal Circle of Fencing** provides training for all levels and ages
www.cgdel.lu
- ➔ **Frisbee** competition training with **Ultimate deLux**
www.facebook.com/deluxultimate
- ➔ **The Luxembourg Federation of Football** lists local clubs and youth teams
www.ff.lu
 but under 18s can also try:
- ➔ **Football Klinik Academy** for regular practise sessions
www.octopus-link.com/programme



- **HC Standard club** is perfect for handball enthusiasts

📄 www.hcstandard.lu

- **The Luxembourg Hockey Club** organises indoor and outdoor games

📄 www.hockey.lu

- There are **three ice hockey teams** in Luxembourg

→ **The Huskies**

📄 www.huskiesluxembourg.com

→ **Beaufort Knights**

📄 www.beaufortknights.com

→ **Tornado Luxembourg**

📄 www.tornadoluxembourg.com

- If you want to try **figure ice skating** then **Skating Luxembourg** is the place

📄 www.skating.lu

or you can join

Club Hiversport

📄 www.icedancing.lu

- **Luxembourg Lacrosse** has men's, women's, youth, and children's teams

📄 www.lacrosse.lu/en

- **Horse riders** who specialise in **dressage and show jumping** can find associations at the **Luxembourg Federation of Equestrian Sport**

📄 www.flse.lu

whilst **younger riders** can find a list of stables at

📄 www.petitweb.lu/sorties_type/equitation

- If you're interested in **Aikido, Judo, Jiu-jitsu, Karate, or Taekwondo**, clubs are listed by the **Luxembourg Federation for Martial Arts**

📄 www.flam.lu

Krav Maga also run self-defence classes

📄 www.kravmagacenter.lu

- **Padel training** and classes are available in Parc Hosingen, Remich, Kockelscheuer, Munsbach and Dudelange

📄 www.padel.ft.lu

- You can try **pickleball** with your first lesson for free with **Letz Pickleball Luxembourg**

📄 www.letzpickleball.lu



➤ more on page 52

- ➔ There are several **rugby clubs** with teams for men, women, youths and children. They are listed on the **Federation of Rugby Clubs** website

📱 www.rugby.lu

There are also **touch rugby** teams

📱 www.touch-luxembourg.lu

- ➔ **Gaelic footballers** of both genders and all ages can join training at

📱 www.facebook.com/LuxembourgGAA

- ➔ **Squash** lovers should head to **Top Squash**

📱 www.topsquash.lu

- ➔ Competitive swimmers can train with **Swimming Luxembourg**

📱 www.swimming.lu

- ➔ There are plenty of **local tennis clubs** with **indoor and outdoor courts**, listed by the **Federation of Luxembourgish Tennis Clubs**

📱 www.ft.lu/clubs

- ➔ There are three **table tennis clubs**

→ **DT Union**

📱 www.dtunion.lu

→ **DT Amicale Mamer**

📱 www.dtmamer.lu

→ **DT Cado**

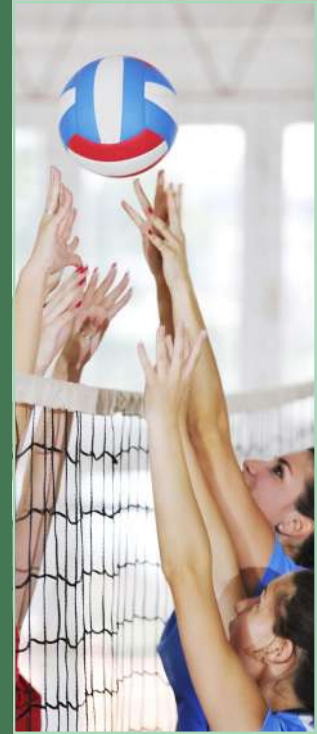
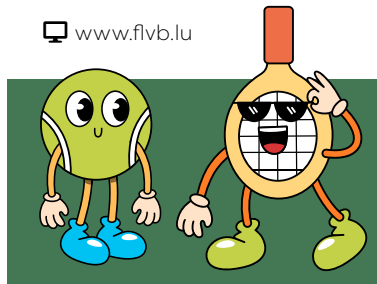
📱 www.dtcado.lu

- ➔ The **Luxembourg Triathlon Federation** organises training via a number of affiliated clubs in Dudelange, Belvaux, Grevenmacher, Ettelbruck, Diekirch, Luxembourg City, Clervaux, and Junglinster

📱 www.fttri.lu

- ➔ **Indoor or beach volleyball clubs**, including youth teams, are listed on the **Luxembourg Federation of Volleyball**

📱 www.flvb.lu



WOMEN'S TEAMS

Luxembourg has plenty of women and girls' teams for sports including:

- ➔ Luxembourg **Crick-et Federation's T20** women's team who played their first international match in September 2023 and are looking to recruit players.
- ➔ **Rugby** clubs, including **touch rugby**, have women and girls' teams.
- ➔ **A born footballer?** Then Ell, Junglinster, Niederkorn and Bettendorf all have women's teams.
- ➔ Teams for girls and women in **Gaelic football, ice hockey, basketball** and **volleyball**.





COQUE

— HOME OF SPORTS —

WETHER ON THE FIELD, IN THE POOL OR IN THE STANDS,
LIVE YOUR PASSION WITH US!



**SPORTS &
CULTURAL EVENTS**



**AQUATIC
CENTER**



**CLIMBING
WALL**



**FITNESS &
SPORTS CLASSES**



HOTEL *
SUPERIOR**



RESTAURANTS



**WELLNESS
CENTER**



**BUSINESS
FACILITIES**

DIVE IN AND DISCOVER ALL OUR ACTIVITIES ON
coque.lu

WORK & PERSONAL FINANCE

An overview of the job market, this section gives you a quick guide with **key figures on employment** in Luxembourg covering everything from the largest sectors to the country's biggest employers, and the most in-demand job skills.

There's also a spotlight on the **public sector** and requirements for working in it, plus an overview of Luxembourg's thriving finance and insurance sector.



TAX & PRIVATE BANKING

Most of us need to file a **tax declaration** annually, but did you know you could get deductions for childcare, domestic help such as cleaning, and for mortgage interest and personal pensions? Check our snapshot on how to file your tax returns with tips on deductions.

We also provide an overview of the conditions you have to meet to **open a bank account** in Luxembourg, and how to transfer money to and from another country outside the EU.

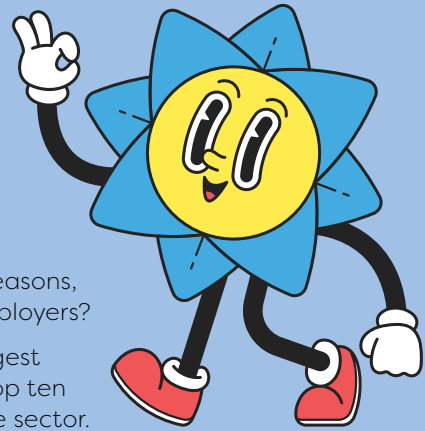


CAREER MOVES

You might be considering a career change or job move, so we give you tips on how to **make your CV stand out**, ways to boost your LinkedIn profile for the local job market, and online resources to help you with your job search.

We also take a look at how the Grand Duchy's employment agency ADEM can help you to acquire or improve language skills or get specific professional training.

AN OVERVIEW OF THE JOB MARKET IN LUXEMBOURG

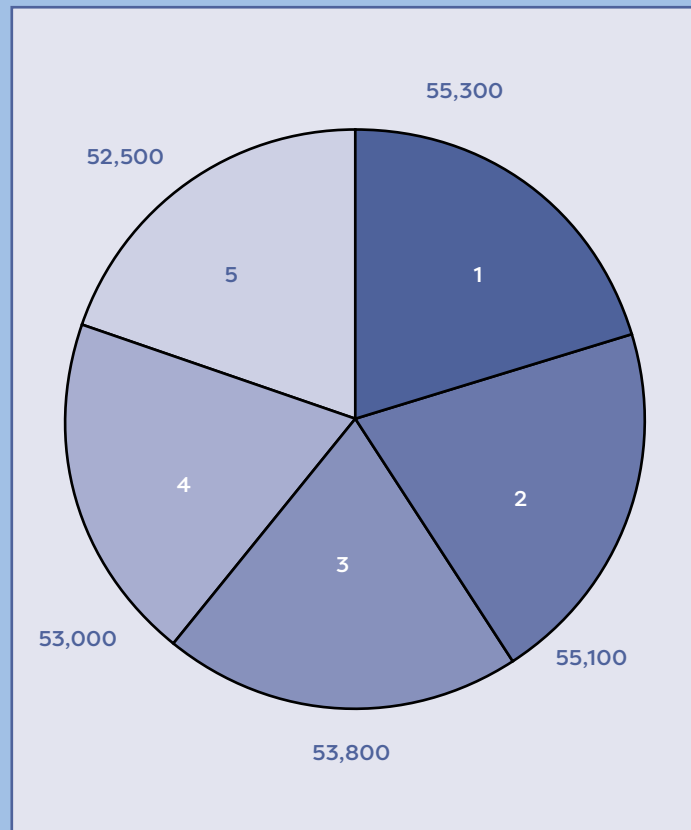


Most foreign residents come to the Grand Duchy for employment reasons, but where do they work, and what jobs are the most sought by employers?

Take a look at our quick guide to the country's top five sectors, biggest employers, requirements for working in the public sector, and the top ten most in-demand jobs, with a spotlight on the finance and insurance sector.

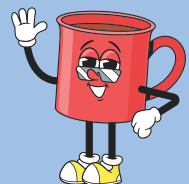
LABOUR MARKET AT A GLANCE

- ➔ **516,000 people employed** in Luxembourg.
- ➔ **75%** of country's workforce consists of **cross-border workers and foreign resident workers**.
- ➔ Approximately **450,800** are employed in the **private sector**, **36,000** in the **public sector** and **29,300** are **self-employed**.
- ➔ **One in ten** employees works in the **banking or insurance** sector.
- ➔ Luxembourg is **3rd in the IMD World Talent Ranking** on ability to attract and retain talent (*ahead of all its neighbours*).
- ➔ There are **226,000 cross-border workers** – half from France and 25% each from Belgium and Germany.

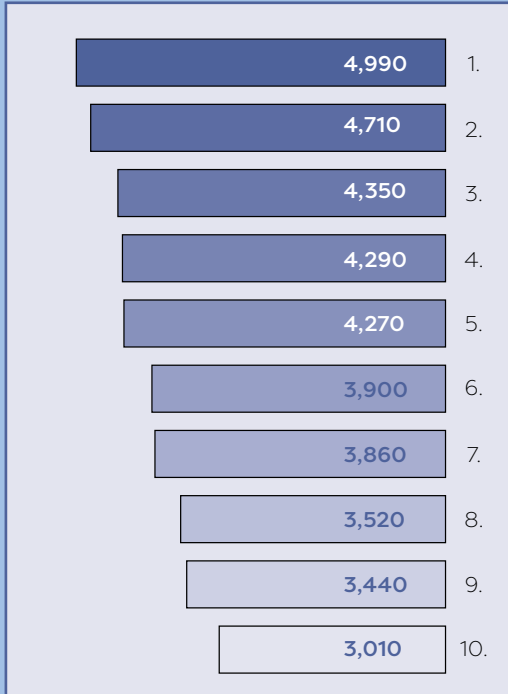


TOP 5 EMPLOYMENT SECTORS (BY EMPLOYEES)

1. Wholesale, retail trade, including vehicle repair
2. Professional, scientific, and technical
3. Health and social work
4. Financial and insurance
5. Construction

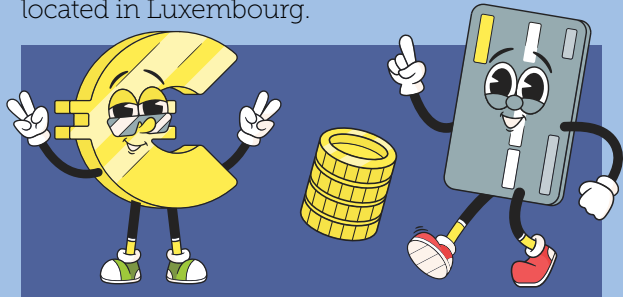


BIGGEST EMPLOYERS IN LUXEMBOURG



1. CFL (railway)
2. Group Dussmann (catering, cleaning, security)
3. Post Luxembourg
4. Cactus Group
5. Amazon
6. BGL BNP Paribas
7. PwC Luxembourg
8. ArcelorMittal
9. Goodyear Dunlop Tires
10. Luxair

14,000 employed by EU institutions
located in Luxembourg.



WORKING IN THE PUBLIC SECTOR

- ➔ There are some **36,000 civil servants** in Luxembourg.
- ➔ **24 ministries** and more than **120 administrations** and services.
- ➔ You must be an EU national for civil servant and public service employee roles.
- ➔ Luxembourgish nationality is required for certain posts.
- ➔ You must demonstrate knowledge of Luxembourgish, French and German for certain posts.
- ➔ Public service workers can include non-EU nationals.
- ➔ Civil servants must take a competitive exam or *examen concours*.
- ➔ You can look for jobs at www.govjobs.public.lu.

SPOTLIGHT ON FINANCE & INSURANCE

- ➔ 121 banks in Luxembourg that employ some 26,000 people.
- ➔ 86 insurance and 192 reinsurance companies.
- ➔ 1,915 investment company funds with €4,013 billion in net assets.
- ➔ 1,210 unit trust investment funds with €901 billion in net assets.

WHICH JOBS ARE MOST IN DEMAND?

1. IT - developers and engineers
2. Accountants
3. Secretaries
4. Accounting and financial audit and control
5. Kitchen aid
6. Credit analysis and banking risks
7. Catering services
8. Defence and legal advice
9. Consulting and project management in information systems
10. Financial analysis and engineering

TIPS TO MAKE YOUR CV STAND OUT IN LUXEMBOURG

Here's how to ensure that your CV and experience stands out from the crowd



ENSURE YOUR LINKED-IN PROFILE MATCHES YOUR CV

Companies will look at your LinkedIn profile to see if it correlates with your CV, but it's also a good place to put additional information you don't have space to include on your CV.

HOW MUCH EXPERIENCE SHOULD I DETAIL

Show the last 10 years in detail, then just list positions with the company name and dates, unless that experience is truly relevant to the industry or field. Companies are focussed on employee retention and company culture, particularly people with soft skills to build a strong team.

EXPLAINING A CAREER BREAK

Show any training, volunteering or study, including learning a language, that you undertook during your career break. If you managed the family relocation state this, and list your skills rather than jobs by date on your CV.

Tips from Bree Schäfer-O'Reilly, managing partner at People Partners Luxembourg, and Cherry Kent, employability consultant

USE KEY WORDS

Recruiters can be looking at 300-400 profiles a week or 100 CVs per job, so using online keyword searches helps them check that candidates have the critical skills listed in the job description. If none come up, your CV might get filtered out.

CREATE DIFFERENT FLAVOURS OF CV

Have a general CV which lists your key work experiences and tasks performed, then based on the job you're applying for, remove anything not relevant and put the emphasis on the skills best matching the job description.

EXPLAIN FREQUENT JOB CHANGES

Employers don't like "jumpy" CVs where candidates have changed jobs every year, but if there are valid reasons, such as acquisition or insolvency of the organisation you worked for, state these.

FORMAT YOUR CV

It's your marketing document but avoid producing something too busy or long. Keep it to a maximum of two pages and include the languages you speak (and at what level) and if you're a third country national. Make fonts and type easy to read, with clearly defined boxes to show-case language or IT skills.



WELCOME EXPAT

YOUR BRIDGE TO LUXEMBOURG, YOUR BRIDGE TO LIFE

Spuerkeess: the national leader with international renown

**World-class ratings: Aa2 (Moody's, Long Term Deposit Rating)
AA+ (Standard & Poor's)**

Among the safest banks in the world

For further information, please do not hesitate to contact our Expat Service
tel. (+352) 4015-5500 or via e-mail expat@spuerkeess.lu

WHY YOU SHOULD SHARPEN YOUR LINKEDIN PROFILE

Having a prominent profile in Luxembourg's tight-knit labour market can boost your job search and career development. Local career coaches and recruiters say that having a LinkedIn profile is essential – here is why:

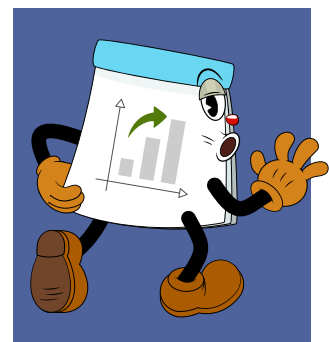
- ➔ Companies and recruiters use it to headhunt local talent or check how well connected candidates are in the industry.
- ➔ You can let companies know that you are interested in working for them even if there are no current vacancies.
- ➔ Some firms may look at what you repost or the comments you make so be careful what you post about your previous employers.
- ➔ Sharing interesting posts within your industry helps build professional networks and make you known within the local industry.
- ➔ US and UK headquartered companies with offices in Luxembourg are more likely to do a deep background check reviewing a candidate's social media profiles. Whatever you "like" will show on your profile.
- ➔ The more detail you have on your LinkedIn profile, the more likely you will appear in a recruitment search.

WHERE TO LOOK FOR A NEW JOB? TRY THESE WEBSITES

- 📱 www.jobsinluxembourg.eu
- 📱 www.jobfinder.lu
- 📱 www.expatica.lu/luxembourg
- 📱 www.monster.lu
- 📱 www.moovijob.com
(often organises big careers fairs)
- 📱 www.jobs.lu
- 📱 www.indeed.u
- 📱 www.eures.eu
(jobs across Europe)
- 📱 www.addeco.lu
- 📱 www.andersonwise.com
- 📱 www.therecruiter.com
- 📱 www.dorecruiters.com

SPECIALIST FIELDS

- 📱 www.multilingualvacancies.com
- 📱 www.ictjob.lu
- 📱 www.efinancialcareers.lu
- 📱 www.govjobs.public.lu
(public sector)
- 📱 www.eu-careers.europa.eu/en/job-opportunities
(EU institutions)
- 📱 www.return2career.com



DRIVING DREAMS



We warmly welcome you. Moving to a new country can be both exciting and challenging. We are here to make your transition period comfortable by finding the perfect car for you. We look forward to meeting you. www.losch.lu

LOSCH
L U X E M B O U R G



NEOPLAN

HESS

SV/O

TIPS ON FILING YOUR ANNUAL TAX RETURNS

For many expats, filing your annual tax returns can seem daunting. Patrick Malget from online tax service taxx.lu gives some simple advice to make the process much easier:

Get your certificates together – employer, insurance, and bank (*for loan or mortgage*) certificates.

Access information in English using the taxx.lu platform which will translate your form although you will file a 20-page PDF in German or French.



KNOW WHAT TAX DEDUCTIONS YOU CAN MAKE:

- ➔ Civil liability in your car insurance.
- ➔ Private health care or life insurance (*even if it is not in Luxembourg i.e. the policy is in the UK*).
- ➔ Private pension plans.
- ➔ Childcare and home cleaning costs.
- ➔ Home savings plans.
- ➔ Mortgage interest (*linked to the number of people in the house*).
- ➔ Bank and notary fees for the mortgage on the year you buy a house.

Deadline for filing individual taxes for 2024 is 31 December 2025.

Example for a couple with 2 kids, younger than 41 years, living in their home for 3 years and earning 6.000€ gross per month each.

ITEM	MAXIMUM DEDUCTION		COUPLE WITH 2 KIDS	TAX SAVINGS
Insurances & Interests on personal loans	672€ per person		2.688 €	1.121 €
Private Pension Plan	3.200€ per adult		6.400 €	2.669 €
Home Savings Plan	672€ per person (Doubled if < 41 years old)		5.376 €	2.242 €
Mortgage Interests	2023 <6 years: 3.000€ 6-10 years: 2.250€ >10 years: 1.500€	2024 <6 years: 4.000€ 6-10 years: 3.000€ >10 years: 2.000€	16.000 €	6.672 €
Child Care & Home Cleaning	5.400€ per household		5.400 €	2.252 €
			Total Tax Savings	14.955 €

The best way to wish you a warm welcome

SPECIAL OFFER¹⁾ NEW ARRIVALS

Take advantage of our special offer **when you open an account online with the **Comfort pack** or the **Exclusive pack**.**

[More information at bgl.lu](https://www.bgl.lu)



**BGL
BNP PARIBAS**

The bank
for a changing
world

1) Terms and conditions apply. Valid from 5 June to 31 July 2024. Subject to bank approval of your application. More information in-branch and at [bgl.lu](https://www.bgl.lu).

2) EUR 50 offered for the subscription of a Comfort pack or EUR 100 offered for the subscription of an Exclusive pack. Amount paid 3 months after opening of account provided that a minimum monthly cash inflow of EUR 1,500 is made for 3 months into your BGL BNP Paribas account (from the first full month).

BGL BNP PARIBAS S.A. - 50, avenue J.F. Kennedy L-2951 Luxembourg, R.C.S. Luxembourg : B 6481 - Marketing Communication June 2024

OPENING A BANK ACCOUNT & TRANSFERRING MONEY

It's straightforward to open a bank account in Luxembourg, although if you regularly move money to and from your home country, it may be cheaper to use an online bank.



CRITERIA TO OPEN A CURRENT ACCOUNT IN LUXEMBOURG:

- ➔ Aged 18+ years.
- ➔ Photographic ID card such as a passport or EU driving licence.
- ➔ You are resident in Luxembourg – proof of address such as a utility bill or residency certificate.
- ➔ You work in Luxembourg but live in the Greater Region – a non-resident bank account requires a proof of address for correspondence.
- ➔ If you have a bank account in another country you may be asked to transfer a small amount to your Luxembourg account.
- ➔ Proof of employment such as a contract – wage slips may be required for a credit card.

RETAIL BANKS

BCEE Spuerkeess (*state bank*)

📄 www.spuerkeess.lu/en

BGL BNP Paribas

📄 www.bgl.lu/en

BIL

📄 www.bil.com/en

Banque Populaire ALC

📄 www.bpalc.lu

Raiffeisen

📄 www.raiffeisen.lu

Post Luxembourg

📄 www.post.lu/en

TRANSFERRING MONEY ABROAD

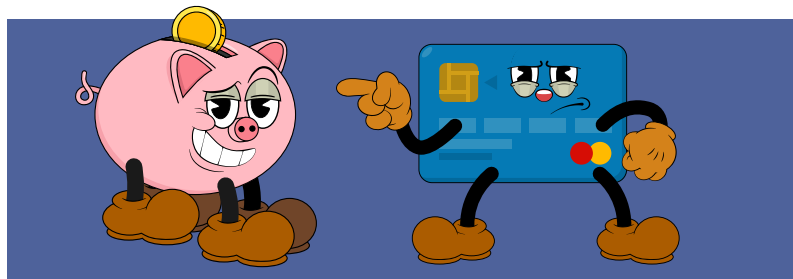
You can use Western Union to make simple transfers of money to and from Luxembourg. If you need to regularly transfer money in multiple currencies such as Euros, UK pounds sterling or US dollars, consider an online account with Wise, Revolut or Bunq.

📄 www.westernunion.com

📄 www.wise.com

📄 www.revolut.com

📄 www.bunq.com



GETTING TO KNOW THE PRINCIPLES OF GOOD INSURANCE

You recently moved to Luxembourg? A hearty welcome! Now it's time to think about the insurance related administrative procedures. Before choosing your future insurer, it may be useful to know the specificities of your new country of residence. Here are the main ones.



To begin with, in Luxembourg, only motor-vehicle civil liability insurance is compulsory. But other insurances will be very useful to you, in particular:

- ➔ **Home insurance**, which in any case is required by the owner in case of rental
- ➔ **CASCO**, or all-risks, which covers damages to your vehicle
- ➔ **Family civil liability**, generally offered with home insurance

You should also be aware that service is one of the main differences compared to your country of origin. Indeed, in Luxembourg, your insurance agent will be much closer to

you. Here, they will be at your side, advise you and accompany you when you need it. That is, not just to sell you insurance, but especially in the event of a claim. He will always be by your side.

At first sight, premiums may seem higher. But there are good reasons! Indeed, in Luxembourg, the deductibles are rather exceptional, claims are better compensated and paid very quickly. So, there is no stress with a Luxembourg insurance.

Finally, in terms of health insurance, even though Luxembourg has one of the best health-care systems in the world, some medical services and products are not fully reimbursed, most notably dental, and optical

care. It is therefore important to take out supplementary health insurance. In Luxembourg, you are free to choose the one that suits you. Discover the comprehensive coverage **EASY HEALTH** from **DKV Luxembourg**, member of the **LALUX Group**.

If you wish to be helped in your insurance procedures, contact **LALUX**, we will introduce you to an agent who speaks your language and is close to you.

Enjoy your stay in Luxembourg!

lalux
ASSURANCES

Who is LALUX ?

Founded in 1920, **LALUX** was the very first Luxembourg insurance company active in the Grand Duchy.

Today, its entities **LALUX**, **LALUX-VIE**, **APROBAT** and **DKV Luxembourg** are among the leaders of the Luxembourg insurance market. Both internal and external studies regularly confirm the quality of service as well as the customer experience with **LALUX**. In fact, 96% of customers claim to be satisfied with the management of their claim.

LALUX not only has more than 100 years of experience but has also the densest network of agents in the country. **LALUX** is your trusted partner for non-life, life, complementary health, and construction insurance.



➔ More information on insurance products for expats.

WHAT CAN ADEM DO FOR ME

Luxembourg's employment agency can do more than just help you write your CV.



For starters, many people don't realise that you don't have to be unemployed to register with ADEM. If you're employed or a third country national legally residing in Luxembourg, you can register to access vacancies often posted in advance of being given to recruitment agencies.

WHERE ELSE CAN ADEM HELP?

If you are registered as unemployed you may qualify for the following:

Free **intensive language courses** tailored to work sectors. You take an online test to evaluate your level, and intensive courses are free and last 8-9 weeks.

Travel and relocation expenses for jobs in Europe. ADEM is a member of the EURES network

of public employment services in the EU and will cover the travel costs for interviews, and even financial aid for relocation. Free **professional and soft skills training** in several sectors including banking and finance, commerce, trade, construction, ICT, office management, and health and socio-education.

ADEM has **partnerships with the training centres** of the Chamber of Commerce, Chamber of Trades, Chamber of Employees, and public providers such as the National Institute of Languages (INL), the National Centre for Continuous Professional Training (CN-FPC), and the Digital Learning Hub, offering free professional training courses in finance, commerce, ICT, crafts, transport, catering and hospitality, and logistics.

Job days with different companies or sectors (which may involve up to 80 companies)

with the chance to meet employers in person or virtually.

ADEM

Offices:

Diekirch, Differdange, Hamm (*Luxembourg City*), Wiltz, and Wasserbillig.

Opening hours:

Monday to Friday 8.00 to 12.00 and 13.00 to 17.00.

Jobseekers

tel: 247 88888

Employers

tel: 247 88000

Email:

info@adem.etat.lu

Register:

online via MyGuichet.lu or by calling the contact telephone number for jobseekers.



Just arrived



already connected

Livebox Fiber

Learn more
here ▼



Easy

Fast

Powerful



orange™

is here

EDUCATION & FAMILY



CHOOSING THE *RIGHT SCHOOL*

Finding the **right school for your child** is important, and thankfully Luxembourg has several options from state-run local and international schools, to fee paying private education.

We provide a checklist of things to consider when choosing or changing schools, and an overview of the **different school qualifications** from the Luxembourgish Diploma and European Baccalaureate, to IGCSEs and A levels or the International Baccalaureate.

You might not speak any of the official languages of Luxembourg – German, French or Luxembourgish. Don't worry, there are plenty of courses to help you learn them, in addition to conversation exchange groups. The Luxembourg Integration Contract gives you discounts on **language classes** and the chance to join orientation and citizenship sessions.



CHILDCARE OPTIONS

If both parents want to work, you will need **childcare**. We cover everything from nannies and au pairs to daycare centres, creches and wraparound school care, including the costs and financial help from the state.



ADULT TRAINING

Whether you want to start an MBA or hone your professional skills, there are plenty of **higher education** and adult training places, together with classes to improve your language proficiency, or to take up a hobby like sewing or photography.



WHAT ARE YOUR CHILDCARE OPTIONS

If you need part-time, full-time, or wraparound childcare, we outline your choices.





PUBLIC AND PRIVATE CRECHES

Both are regulated by the state for education standards and serve children aged four years or younger. Spaces are limited and in public creches, priority is given to single parents. Public creches have standard hours whilst private ones tend to operate longer hours.

DAY NURSERIES

Take children from 2 months to 8 years for a maximum of 16 hours per week.

DAY CENTRES AND MAISONS RELAIS

Day centres take children from 4-12 years and are open when schools close to provide lunch and help with homework. *Maisons Relais* are operated by local municipalities and are usually attached to or located near a primary school. They are open from 7.00 until 19.00, and take children aged 3-12 years.

NANNIES AND AU PAIRS

Nannies usually have childcare qualifications and can live in or out. Au pairs live in, do not have specific qualifications, and can take on light chores. Both are considered full time if they work 25 hours a week, and au pairs cannot work more than five hours a day. In Luxembourg, hosting an au pair is regulated, with the host family paying for a language course and providing pocket money that is at least one fifth of the social minimum wage.

CHILDMINDERS

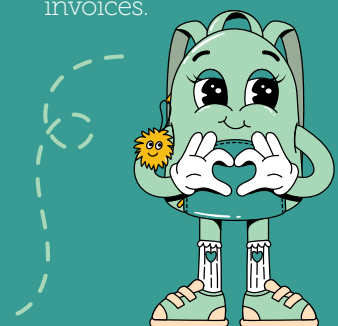
This can be day or night care, but must be provided by someone who is accredited. Childminders cannot care for more than five children including their own, at any given time.

KRANK KANNER DOHEEM

A home service for working parents that provides care for sick children.

COSTS AND FINANCIAL HELP

- ➔ Childcare is FREE for children aged 4-12 years during school term time (from 7.00 to 19.00), as are school lunches.
- ➔ Children aged 1-4 years accommodated in a collective and multi-lingual childcare environment can receive up to 20 hours of free childcare per week (up to 46 weeks per year).
- ➔ Parents of pre-school children or those who need school holiday care for older children are subsidised through the *Chèque Service Accueil (CSA)*, an income-based government subsidy.
- ➔ The exact subsidy depends on the number of children per family, the household income, and the number of hours in non-formal education required per month by each child.
- ➔ CSA is paid directly to the registered childcare provider and deducted from monthly invoices.



WHAT SHALL WE DO WITH THE KIDS?

Luxembourg may be small but there is plenty going on to keep children and teens occupied year round, rain or shine.

CHECK THESE WEBSITES FOR ACTIVITIES LISTED BY DATE AND TYPE

- 📱 www.whatsonforkids.lu
- 📱 www.petitweb.lu
- 📱 www.kideaz.lu
- 📱 www.supermiro.lu



INDOOR FUN

TRAMMUSÉE

- 📍 63 Rue de Bouillon
- 🕒 Thursday 13.30 to 17.30, weekends/ public holidays 10.00 to 18.00

Dive into the past, present and future of public transport in Luxembourg with restored motor cars and buses, a life-sized replica of a horse-drawn tram, and plenty of scale models.

YOYO

- 📍 105 Rue de Bruyères, Howald
- 🕒 every day of the week (until 23.00 on Friday and Saturday)

Let kids run off steam while you relax with a coffee or have a meal at this giant indoor playground equipped with softball pits, a huge frame to explore, and a thrilling waterfall slide.

NORDIC STELLA

- 📍 2 Rue de la Fonderie
- 🕒 weekends and Tuesday & Wednesday

Paint pottery from mugs, bowls, plates, cups and kids' items, using different techniques and colours, which will be glazed and fired for collection a week later.

GALLERY TOURS

MUDAM, Villa Vauban and Casino Luxembourg all have family tours or workshops, and the latter has parent and baby visits one Friday morning a month.



OUTDOOR FUN

BIODIVERSUM-NATURE RESERVE HAFF RÉIMECH

- 📍 Remerschen
- 🕒 Tuesday to Sunday 10.00 to 18.00

This upturned boat-shaped nature reserve has an underwater world and interactive displays of local flora and fauna, including stuffed animals. You can walk around the lake or take a swim there in summer.

INSENBORN BEACH UPPER SÛRE LAKE

- 📍 Esch-sur-Sûre
- 🕒 daily 1 May to 30 September

Head to this picturesque beach for a swim or hop on the solar powered boat for a tour of the lake. You can also try kayaking or stand-up paddle boarding.

PARC MERVEILLEUX

- 📍 Bettembourg
- 🕒 end March to early October

Visit lemurs, meerkats, monkeys and penguins then see fairytales brought to life with automated puppets, try a bare-foot path, and climb in the adventure playground.

ESCHER DÉIEREPARK

- 📍 Gaalgebierg
- 🕒 every day of the year

Open every day of the year, you can collect fodder and feed the goats, sheep, highland cattle and various species of deer. There are also rabbits, shy raccoons and guinea pigs, plus an onsite café open during the holidays.

FOR TEENS

BASE 1 MAKERSPACE

- 📍 Forum Geesseknäppche
- 🕒 Monday to Friday 12.30 to 18.30

Base 1 Makerspace at Forum Geessenknäppchen has all the equipment required to build your own drone, make a movie, programme a game, or create your own music, with coaches on hand to help.

SKATEPARK PÉITRUSS

is just the place for skateboarders to perfect a dark slide, with a bowl, bleachers, and plenty of ramps. Free drinking water, Wi-Fi and an outdoor gym nearby if teens want to tone up.



ZERO LATENCY CONCEPT

in Mersch is a virtual reality entertainment centre where teens can take on zombies or escape to a fantasy alien world suspended above the ocean.

PARENTS & TODDLER

CAFÉ POUSETTES

- 📍 10 Rue Bisserwee
- 🕒 Mondays at 10.00

New parent? Head to this bi-monthly coffee morning with plenty of toys and equipment and a chance to exchange ideas or ask for parenting advice.

KINDYROO

- 📍 Cloche d'Or
- From birth to crawling, this place offers sensory and motor skills classes.

BABY YOGA AND MASSAGE

- 📍 Liewensufank
- Try a spot of baby yoga or a baby massage class with your newest addition, with some classes exclusively for dads.

SCHOOLS IN LUXEMBOURG

Advice on what to consider when choosing a school, and a list of state-run and private international schools.

Schooling is compulsory from ages 4-16 years although it is also legal to home school your child.

WHAT SHOULD YOU CONSIDER WHEN CHOOSING A SCHOOL?

- 1. How long you plan to stay** – local schools afford better integration, but international ones may fit best if you are likely to move again.
- 2. Languages** – what languages do you speak and what age are your children for learning fluency in new ones.
- 3. Special needs** – what support is available in-school, for example iPad learning for dyslexia.
- 4. Qualifications** – what will be the final school qualification.
- 5. Location and school hours** – the hours per day at school can vary and you should consider public transportation and wrap-around care.
- 6. Application deadlines and entry tests** – what's required and when.



STATE RUN INTERNATIONAL SCHOOLS (IS) WITH ENGLISH-LANGUAGE STREAMS

ATHÉNÉE DE LUXEMBOURG

Ages: 11-18+ years

Qualifications:
International Baccalaureate

📄 www.allu

IS MONDORF-LES-BAINS

Ages: 6-18+ years

Qualifications:
European Baccalaureate

📄 www.lml.lu

IS MICHEL LUCIUS

Ages: 6-18+ years

Qualifications:
IGCSEs and A levels

📄 www.lml.lu

IS ANNE BEFFORT

Ages: 6-18+ years

Qualifications:
European Baccalaureate

📄 www.lml.lu

IS DIFFERDANGE & ESCH-SUR-ALZETTE

Ages: 6-18+ years

Qualifications:
European Baccalaureate

📄 <https://portal.education.lu/eid/>

IS GASTON THORN

Ages: 6-18+ years

Qualifications:
European Baccalaureate

📄 www.eigt.lu

LËNSTER LYCÉE IS

Ages: 4-18+ years

Qualifications:
European Baccalaureate

📄 www.lensterlycee.lu

EDWARD STEICHEN IS

Ages: 4-18+ years

Qualifications:
European Baccalaureate

📄 www.lesc.lu





SAVE
THE DATE!
**Tuesday,
12 November
2024**

Early Years **OPEN DAY @ ISL**

Take a guided tour of Early Years in the Lower School and discover what makes ISL unique

Information and registration: www.islux.lu



EU INSTITUTION SCHOOLS

EUROPEAN SCHOOL LUXEMBOURG I

Ages: 4-18+ years
(creche facilities)

Qualifications:
European Bacalaureate

www.euroschool.lu

EUROPEAN SCHOOL LUXEMBOURG II

Ages: 4-18+ years
(creche facilities)

www.eel2.eu/en



PRIVATE SCHOOLS IN ENGLISH LANGUAGE (FEE PAYING)

ST GEORGE'S IS LUXEMBOURG

Ages: 3-18+ years

Qualifications:
IGCSEs and A levels

www.st-georges.lu

INTERNATIONAL SCHOOL LUXEMBOURG

Ages: 3-18+ years

Qualifications:
IGCSEs and International Bac-
calaureate

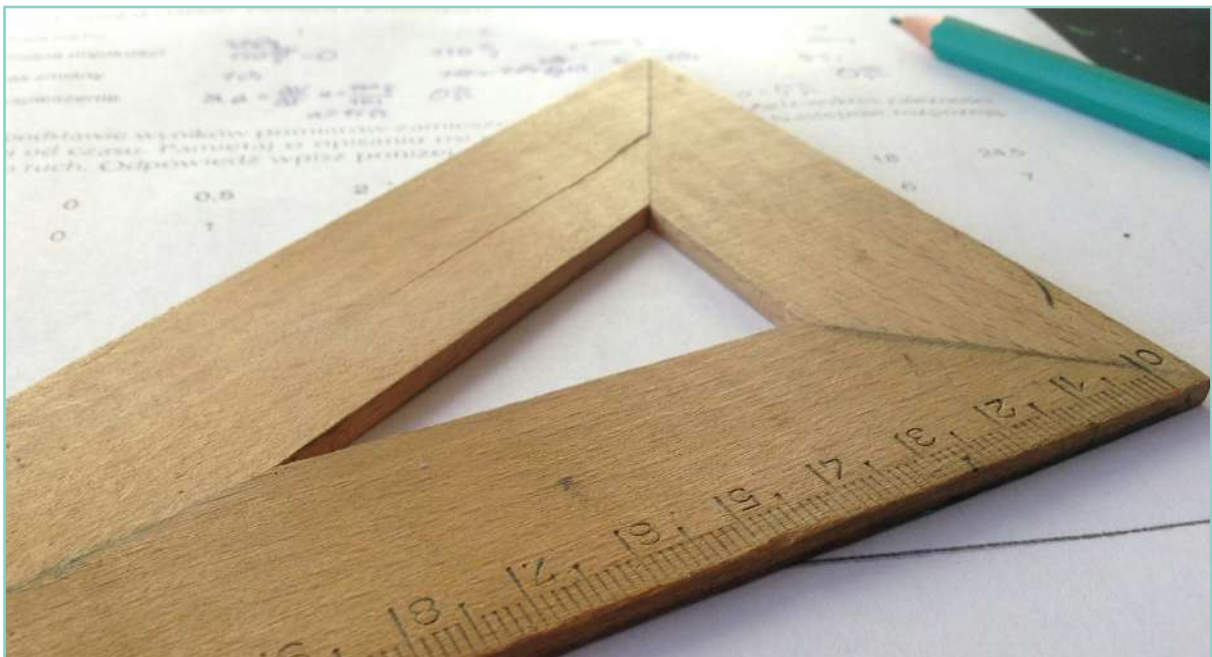
www.islux.lu

OVER THE RAINBOW

Ages: 3-18+ years

Qualifications:
International Bacalaureate

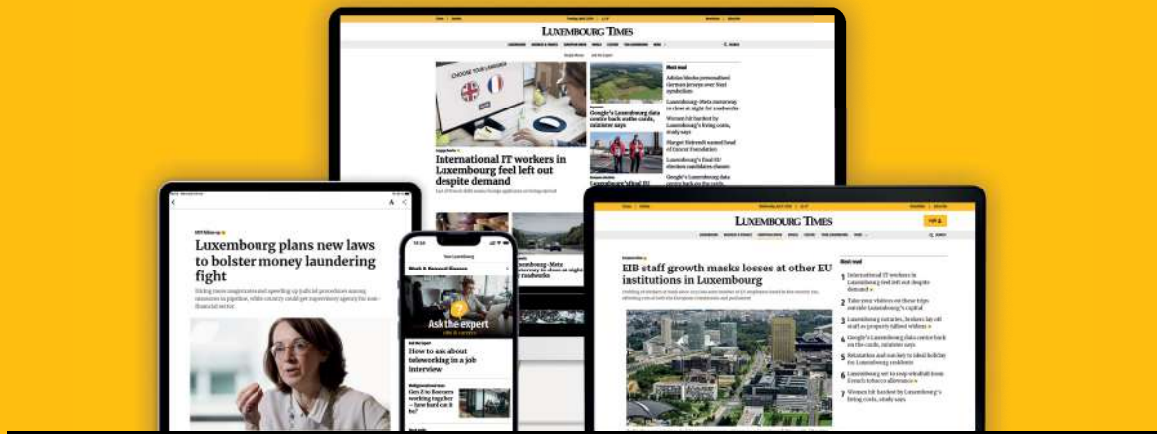
www.otrschool.lu





LUXEMBOURG TIMES

We question. We cover. We connect.



Luxembourg's leading online newspaper in English

Download the app

LuxTimes.lu



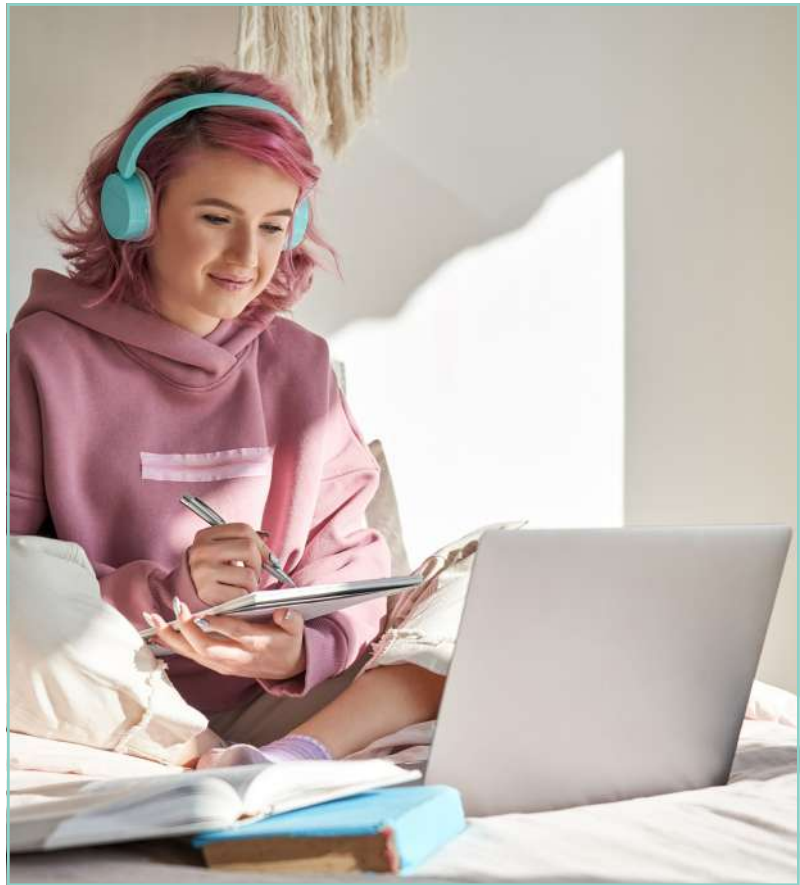
A GUIDE TO SECONDARY EDUCATION CHOICES

Students can take the International and European Baccalaureates, the Luxembourgish Diploma or IGCSEs and A levels – but what's the difference?

Navigating your way around the various school leaving qualifications in Luxembourg can be difficult, so we guide you through how each works.

HOME SCHOOL AT SECONDARY LEVEL

- ➔ To home school from ages 11 or 12 to 18 or 19 years you must write to your municipality to inform them.
- ➔ You can either enrol your child in an online programme which leads to a specific qualification or you can defend the right to self-directed learning to the Ministry of Education.
- ➔ Evidence of what has been learned may be required by the director of education for your municipality.



LUXEMBOURGISH DIPLOMA

- ➔ General or classic school diplomas with six final year subject exams and two oral ones.
- ➔ Classic diploma requires students to take two subjects from languages and maths choices, three from specialised fields and one from the general education field (*these include science, social sciences, humanities, arts, IT and business*).
- ➔ The general diploma requires students to choose a field from which their six subjects can be selected – these include administration & commercial, health and social professions, general technical, arts, and hotel management and tourism.

➔ more on page 80

Languages

Certifications

Training courses

www.inll.lu



The Institut national des langues Luxembourg (INLL) offers a comprehensive range of national and international certifications, including the **Sproochentest**, along with over 1000 language courses, catering to different proficiency levels and language goals.

To explore the wide array of language learning opportunities and certifications available, visit our website at www.inll.lu.

Scan to discover
our website



ORIENTATION DAYS
for our autumn
semester courses

16 + 17

September 2024



 **Our 3 locations:
Luxembourg Glacis • Belval • Mersch**

INTERNATIONAL BACCALAUREATE

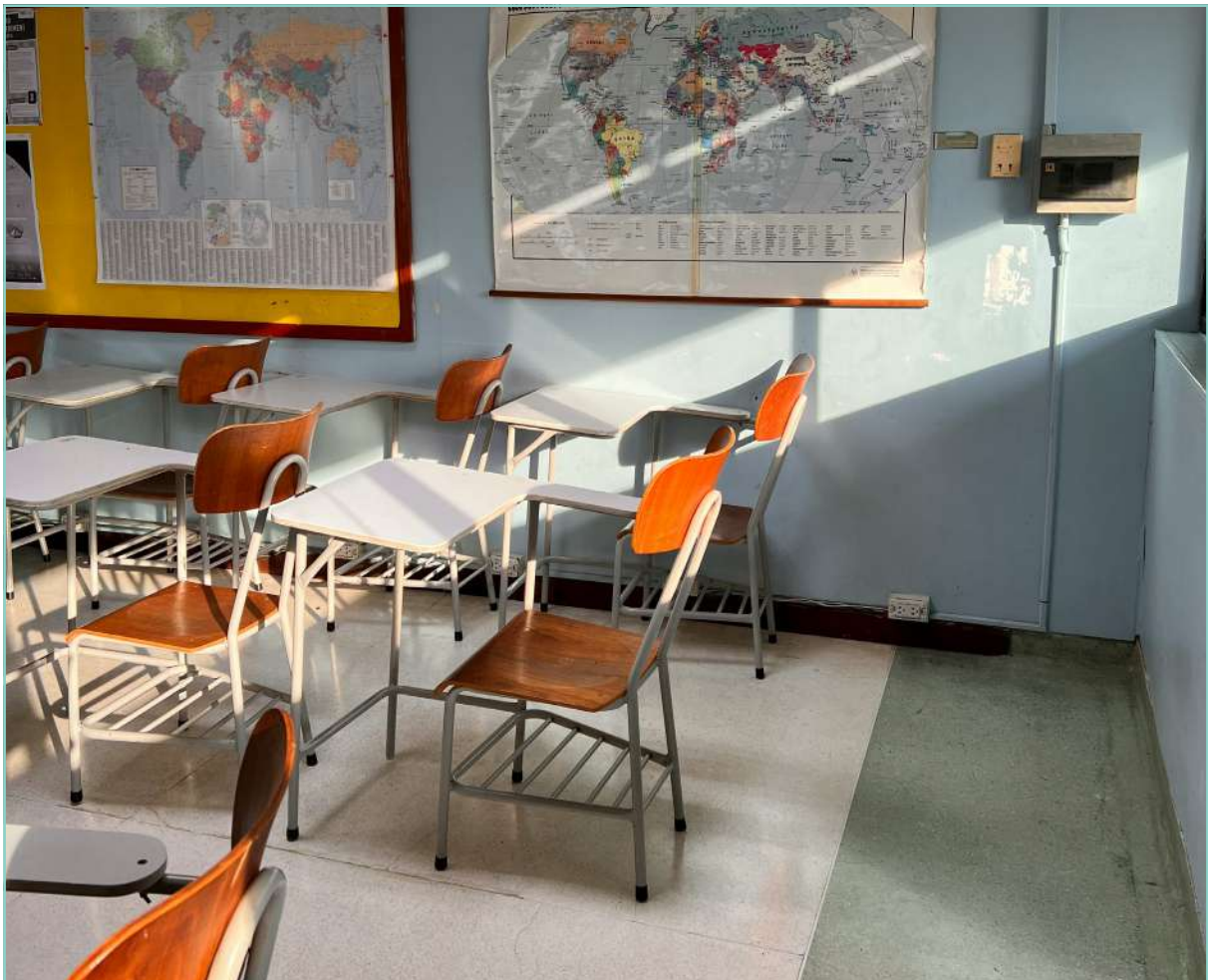
- Six subjects chosen in the final two years, three at standard level, three at higher level. First and second languages are compulsory, as is maths.
- For remaining choices, one subject must be taken in humanities, one in science and a third subject can be arts, languages, humanities or science.
- An extended essay, theory of knowledge course and CAS project (*creativity, activity, science*).

EUROPEAN BACCALAUREATE

- A minimum of ten subjects including at least two languages, one science subject, human sciences, ethics or religion and philosophy.
- Additional subjects in science, social science, humanities, arts or languages. Social science and humanities subjects are taken in language 2.
- Pupils sit five written exams (which include maths, and languages 1 and 2) and three oral exams (*languages 1 and 2, and a subject taken in language 2*).

IGCSES AND A LEVELS

- Seven or more IGCSEs are taken at 15-17 years and must include English, maths, a second language, and science subjects (*this can be two or three IGCSEs*).
- Two or more A levels are taken at 17-19 years and can be chosen from classical subjects, but also specialist ones such as environmental studies or psychology.





[LUNEX]

Study in Luxembourg: Health, Management and Sport

LUNEX offers Bachelor's and Master's degree programmes in the fields of sport, health and management in Luxembourg. Our courses, offered exclusively in English, set high educational standards to prepare you for the challenges of the global job market. Find out more about our study programmes:

Sport Management

Nutrition, Fitness and Health

Corporate Health Management

Sport and Exercise Science

Physiotherapy

Study programmes accredited by:



THE GOVERNMENT
OF THE GRAND DUCHY OF LUXEMBOURG
Ministry of Research and Higher Education

*We care, you succeed,
join the LUNEX experience!*

TRY THESE ADULT EDUCATION PLACES TO LEARN A NEW SKILL

You're never too old to learn something new, from singing or self-confidence skills to ICT or project management.



There are several ways you can retrain, gain new skills or just try your hand at something different in Luxembourg. Classes can be in-person, online, last a few weeks or a few years.

LIFELONG-LEARNING.LU

With 320 approved training providers and more than 12,000 courses, Lifelong-learning.lu supports people returning to work, young adults to transition from school, or those seeking a new career.

It runs courses, seminars, evening and day classes on a wide variety of subjects from health, finance, and law, to communications, ICT and electrical engineering, in addition to art, craft and music classes.

LIFELONG LEARNING CENTER

Run by the Chamber of Employees, LLLC offers classes, seminars, university courses and professional certifications in a number of languages. You can learn about office tools fundamentals or leadership and communication skills, but also study for specific professional qualifications in finance, accounting or law.

HOUSE OF TRAINING

Certified courses in banking, finance, law, project management, marketing, and IT and software, plus almost 1,500 continued professional development courses.

DIGITAL LEARNING HUB

If you want to improve your IT skills head to this Belval base with 150 computers available 24/7. Run by the Ministry of Education, it offers 130 IT-related courses such as cybersecurity, block chain, and coding.

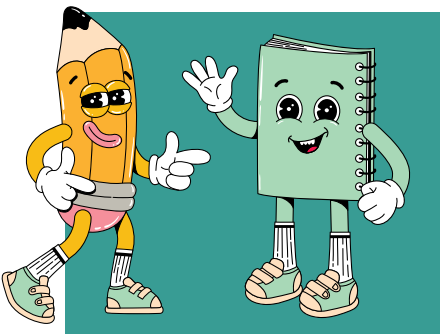
SECOND DEGREE ASBL

Shorter courses typically requiring two hours per week over an eight week period, including interior design, photography, basic sewing, cookery and dancing.



LEARNING A LANGUAGE

If you want to hone your language skills or learn Luxembourgish, try classes at the Institut National des Langues (INL) which also has a free online learning platform. Check your local commune for language classes for beginner and intermediate levels.



HIGHER EDUCATION

University of Luxembourg

- University of Luxembourg offers 62 master and 37 bachelor degrees, with some courses taught in English.
- Ranked 4th worldwide for international outlook by The Times Higher Education World University Rankings 2023.

Luxembourg School of Business

- Luxembourg Global Executive MBA programme can be completed whilst working full-time.
- Two year course with specialist fields in financial management, data analytics, strategic talent management and digital business and finance.
- Two-year Weekend MBA studied two weekends per month.

FOOD & NIGHTLIFE



Whilst Luxembourg offers great opportunities for career enhancement, all work and no play makes for a dull life.

Our guide to some aspects of socialising in Luxembourg puts the focus firmly on the country's great cuisine options.

If you haven't tried any local dishes yet, then check out our article on where to eat **Luxembourgish cuisine** from *Judd mat Gaardebounen* to *Friture de la Moselle*. These culinary specialities reflect the country's traditions and history.

What better way to start your Sunday than **brunch**? We give you the lowdown on several places that offer it, with different price ranges to suit every pocket.

Flexitarianism is on the rise, as people opt to eat vegetarian most of the time as a way to live more sustainably. Our guide to **vegetarian eateries** lists, some of the best plant-based dining options and what you can expect on the menu.



WINE TASTING

Luxembourg's **wine** region produces some 13 million bottles a year, and you can visit many of the wine estates to sample the different wines produced. Take a look at our suggestions for places to taste wine and learn about local viticulture.



GO DANCING

Need to kick-back and shake your groove thing? Check out our **list of dancefloors** and their vibe to find your perfect night spot, plus we also take a deep dive into LGBTIQ+ life in Luxembourg.



GET TO KNOW LUXEMBOURGISH CUISINE

Luxembourg may be small but it has a number of local culinary specialities to sample. We tell you what they are and where to try them.

Local dishes are hearty, and reflect both culinary specialities of the Greater Region but also historical influencers from Luxembourg's occupiers across the centuries.

LUXEMBOURG'S MOST FAMOUS DISHES

GROMPEREKICHELCHER

a deep fried potato cake popularly served at funfairs and markets.

JUDD MAT GAARDEBOUNEN

slow cooked smoked pork collar with beans.

BOUNESCHLUPP

a green bean soup with vegetables, smoked sausage and a dash of Riesling.

FRITURE DE LA MOSELLE

deep fried freshwater fish in a Riesling batter.

WÄINZOSSISS MAT MOSCHTERZOOSS

pork sausages with mustard sauce.

KNIDDELEN MAT SPECK

potato dumplings fried with bacon bits.

RIESLINGSPASCHTÉIT

a sausage roll meets pork pie with a wine jelly.

PASCHTÉIT

a puff pastry vol-au-vent filled with chicken in a cream sauce.

FLAMMKUCHEN

a type of pizza made with sour cream, onions and bacon bits.

FEIERSTENGZALOT

diced boiled beef mixed with shallots and capers dressed in a vinaigrette which includes mustard, tarragon and parsley.



BISTROS & BRASSERIES SERVING LUXEMBOURGISH FOOD

RESTAURANT UM DIERFGEN

🏠 6 Côte d'Eich, Luxembourg City



A sunny terrace and simple décor with wooden tables set over two floors, and one of the most extensive menus featuring local cuisine.

BISTRO DE LA PRESSE

🏠 24 Rue du Marché-aux-Herbes, Luxembourg City

Puppets hang from the ceiling at this charming bistro with views of the Grand Ducal Palace. You can also try raclette (a fondue of melted cheese in which you dip boiled potatoes, meat or vegetables).

ONS STAD

Get the City's twice-yearly magazine delivered to your door, and find out more about the capital's past and present through historical and cultural articles and features.



SOCIAL MEDIA

Follow us on social media to stay up to date on events, news and reports



VDL.LU

Follow all City of Luxembourg news, with updates several times a day. The site is available in English, French and German.



HOPLR

Get in touch with your neighbours with this free app (App Store & Google Play).



NEWSLETTER

Sign up for the City's weekly newsletter and get our latest news (FR, DE or EN) delivered directly to your inbox.



CULTURE

Sign up to get the newsletters of our cultural centres and/or follow them on social media: our theatres and museums, the Cinémathèque, the Cité-Bibliothèque, the Conservatoire and the Photothèque.



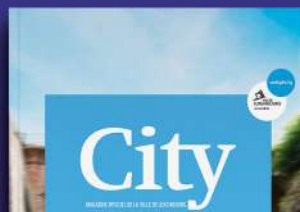
CITYAPP-VDL

Download the City's free app to get real-time information (on buses, parking, etc.) that can be personalised to suit your needs.



CITY

Get the capital's monthly magazine delivered to your door for all of the City's news and the most comprehensive calendar of cultural events in the Greater Region.



STAY INFORMED, YOUR WAY

Apps, magazines, newsletters, website, social media – get information about your city how you want it, when you want it.



BRASSERIE DU CERCLE

🏠 2a Rue des Capucins,



Luxembourg City
A corner location on Place d'Armes that is cosy in winter with furs and blankets, and light and airy in summer. Get your gromperkichelcher with bacon, cheese and a fried egg.

BEIM ZEUTZIUS

🏠 71 Rue de Trèves,
Luxembourg City

A simple charm emanates from this café which is surprisingly spacious inside. It's the place to try kachkeis, or Luxembourgish cheese.

JUEGDSCHLASS

🏠 400 Rue des Sept Arpents,
Beggen



At one end of the Bambësch forest in Biergerkräiz, this family restaurant has a lovely terrace and a field of donkeys nearby. In season, you can try local wild boar stew.

SIEWEBUREN

🏠 36 Rue des Sept-Fontaines,
Rollingergrund



A hotel-restaurant at the other edge of Bambësch forest, with tables outside and family sized banquettes inside, plus a lovely playground and pond opposite.

BRASSERIE DU MUSÉE

🏠 Rue de la Bruyère, Rumelange

Part of the mining museum this Red Rock regional restaurant has a lovely big terrace with a playground, and serves up local cuisine but also has a kid's menu.

BISTRO BRASSERIE KOEPPCHEN

🏠 9 Berreggaass, Upper Wormeldange



Perched on a hill overlooking the Moselle River with two lovely terraces, this is the place to sample *friture de la Moselle* or fried freshwater fish in a Riesling batter, which Koepchen has been dishing up since 1907.

WÄISTUFF A POSSEN

🏠 4 Keeseschgässel,
Bech-Kleinmacher



Picked out by Gault & Millau in 2024, this relatively new place is cosy, and attached to the museum of the same name, with wooden tables and comfy chairs.

BRIDELER STUFF

🏠 1 Rue Lucien Wercollier, Bridel

A staggeringly long menu featuring Luxembourgish specialities, but if you have a big enough group (50+), they can prepare a Luxembourgish buffet for guests to try out all the local dishes.

Discover our
LOCAL TREASURE



Experience the variety of fresh and tasty products in any of our **71 SUPERMARKETS and STORES** across Luxembourg.

 **Cactus**

SEVEN SPOTS TO DANCE THE NIGHT AWAY

Fancy an evening on the dancefloor? Check out these night spots, their vibe and their crowd, to find the perfect place for you.

APOTECA BAR & CLUB

🏠 12, Rue de la Boucherie

Underground cellar club with vaulted stone ceilings and spiral staircases, has a smokey dancefloor and intimate spots.

Crowd: *Vibrant*

Vibe: *London nightclub meets LA wine bar*

IKKI

🏠 19-21, Rives de Clausen

This fusion kitchen serving appetizers and sushi, features a trendy dance floor at the weekends that attracts folks who like its laid-back, lounge atmosphere.

Crowd: *Fashionistas*

Vibe: *Sex & the City*

GOTHAM

🏠 14, Avenue de la Faïencerie

Oozing glamour with gold chandeliers and a dance floor framed by VIP tables, there's plenty of electro music to accompany your bling.

Crowd: *Thrill-seekers*

Vibe: *Glamorous*



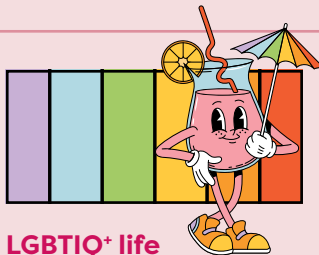
MELUSINA

🏠 145, Rue de la Tour Jacob

Voted Best Club at the Luxembourg Nightlife Awards 2023, this two-floor riverside venue has a 16+ entry age which attracts a younger crowd.

Crowd: *Appreciates a good sound system*

Vibe: *High energy*



LGBTIQ+ life

➔ Pride Week (July)

street party, parade, live music and an equality march organised by the LGBTIQ+ community that takes place in Esch-sur-Alzette.

➔ Rainbow Centre

A safe space in the capital that promotes LGBTIQ+ visibility and culture with exhibitions, round-table discussions, concerts and workshops.

➔ Letz Boys

Grand Rue bar for the LGBTIQ+ community.

➔ Pink Ladies

organises monthly meetups.

➔ Pink Gents

organises a monthly gentlemen's dinner.



SCOTT'S PUB

🏠 4, Bisserweg

Landmark pub that swaps food for late night DJs who spin a variety of music hits. A dark wood interior, on two levels.

Crowd: *Eclectic and all ages*

Vibe: *The comfort food of nights out*

DE GUDDE WËLLEN

🏠 17, Rue du St Esprit

One-size fits all cocktail bar featuring a terrace with the best views over Grund and a two-floor club at weekends.

Crowd: *Sophisticated chill*

Vibe: *The drinks might be cooler than you*

HITCH

🏠 21-25 Allée Scheffer

A makeshift dancefloor after restaurant hours, where music bounces from current hits to house, hip-hop, and R&B, and the crowd is just as mixed.

Crowd: *After work party*

Vibe: *New York loft*



**Philharmonie
Luxembourg**

We see music

Keep soaking up
the good vibes
at the Philharmonie

New season 2024/25



LE GOUVERNEMENT
DU GRAND-DUCHÉ DE LUXEMBOURG
Ministère de la Culture

 Mercedes-Benz

SUNDAY BRUNCH IN THE CITY

There's nothing better than heading out on Sunday morning for a spot of brunch. If you're looking for a brunch spot that serves up all the usual Sunday suspects from eggs, toast and pancakes, to granola and fresh fruit, these places are perfect. We've also given them a price rating.

PRICES

🇱🇺 up to €10-20

🇱🇺🇱🇺 up to €20-35

🇱🇺🇱🇺🇱🇺 up to €35-50

LE PAIN QUOTIDIEN



Choose the breakfast bowl with organic scrambled eggs, quinoa tabouleh, avocado and salad, or the Manhattan which teams Atlantic smoked salmon and herb ricotta with a soft boiled egg with organic bread. If you prefer the more expensive set brunch you'll get a pastry, organic bread, granola, yoghurt, eggs, a selection of Luxembourgish cheeses and ham, a hot drink and juice.



PANAME



This bar also does a mean brunch offering eggs ranche-ros style with black beans, Pico de Gallo, guacamole and garlic toast, or a grilled Monterey Jack cheese sandwich with fresh truffle. You can round it off with a matcha and pistachio cheesecake.

BUBBLIES



Head to the Tennis Club Arquebusiers for savoury waffles served with cheddar, egg and bacon or crispy chicken, or poached egg and smoked salmon served on an English muffin with hollandaise sauce and sides of avocado and potatoes. There's also granola and the kids will love the pancakes or French toast served with syrup or chocolate spread.

CHARLES SANDWICHES



A classic brunch featuring an English muffin topped with scrambled eggs, bacon cheddar and HP sauce, or a veggie brunch where your muffin is topped with avocado, egg, tomato and red onions. Sides include baked beans, coleslaw, mushrooms roasted in pesto or you can opt for muesli, waffles, pancakes and fruit.

HERTZ POP-UP



Start your brunch with a Bellini combining Crémant with peach puree, and try poached eggs on Luxembourgish potato cakes – *gromperekichelcher* with hollandaise sauce. Alternatively the menu includes avocado toast with goats' cheese and hummus, Shakshuka, and French toast served with salted caramel butter.

CAFÉ DES CAPUCINS



A buffet style Sunday brunch with homemade pastries, fruit, cheese, cereals and granola, but also Lebanese specialities such as mutabal, stuffed vine leaves, kefta and hummus.

BOUNEWEGER STUFF



Served on both Saturday and Sunday, the classic brunch comprises scrambled eggs, ham and cheese, oven potatoes, roasted tomatoes, a croissant and granola with yoghurt. You can go for the full breakfast with bacon, eggs, sausages, beans and potatoes, or the healthier spinach waffle with bacon, cream cheese, and egg. There are vegan and fish options too.



KONTUR CAFÉ



An all-white interior and a terrace, you can top your classic eggs benedict served with hollandaise sauce, with a choice of smoked salmon, Iberian ham or fresh spinach, and choose between brioche or sourdough bread. There's also porridge and blueberry pancakes, plus a selection of omelettes.

MAMA SHELTER



In the European quarter this restaurant has kids' animators from 13.00 to 15.30, plus table tennis and arcade games to keep the children busy whilst you tuck into a set brunch (half price for children) of croissants, freshly-baked tortillas, eggs, meat and fish dishes, plus waffles, pancakes and a vast array of desserts.

IN VIVO



Wooden tables and exposed brickwork make the ideal setting for a buffet brunch which adds sushi to the usual fare of waffles, cakes, croissants, eggs, fresh fruit, charcuterie and cheese, and vegetarian dishes. You can also opt for a glass of champagne at an extra cost.



2 CRÉMANT COCKTAILS TO TRY

Crémant de Luxembourg is a sparkling wine made from grapes grown in the country's Moselle region.

WHAT IS CRÉMANT DE LUXEMBOURG?

The *Marque Nationale: Appellation contrôlée de Luxembourg* was introduced in January 1991, and Luxembourg is the only country outside France entitled to use the term crémant.

The hand-picked grapes must be perfectly ripe and transported without being crushed. Crémant includes a second fermentation in the bottle followed by nine months of maturation, and comes in brut, dry, and semi-dry formats, using a single grape variety or a blend.

Often sipped as an aperitif it is served chilled (6-8°C).

You can try making these cocktails, created especially for *Your Luxembourg* by the mixologists from two of Luxembourg City's popular bars.



THE GARDEN PARTY

Mixologist: Ayrton Mongenie

Bar: Le 18 Bar

🏠 18, Place d'Armes

Mix equal amounts of Framboise and Poire Williams eau-de-vie in an empty bottle, and infuse with some sprigs of Verbena, keeping in the freezer for five days. If you prefer infuse with basil, rosemary or mint.

Mix 3cl of infused eau-de-vie, 2cl of freshly squeezed lemon and lime, 1.5cl of sugar syrup and a little water (no more than 1cl) and shake in a closed bottle. Filter into a flute glass and top up with a dry crémant such as Mathes.



MEZCRONI SBAGLIATO

Mixologist: Marc Grandjean

Bar: MAYA

🏠 34, Place Guillaume

Pour 3cl Mezcal and 3cl Apérol into a tumbler and mix it together with 3cl red vermouth and 1 dash of orange bitter. Top up with crémant for a great summer aperitif.

CONCEPT & PARTNERS

#RevivngLuxembourg

Hitch

Where food meets party



Eat. Dance. Fabrik



Do wou gebuwwelt gett

Beim
Méchel

#mirsimiersch



A regional bistro cuisine for everyone



Way of life in Warken

SIEGFRIED

Luxembourgish dandy



Let's get healthy.



International wine bar.

KIN
KHAO

Authentic Thai Food



It's all natural.

Bistr
Quai

Wine & Dine



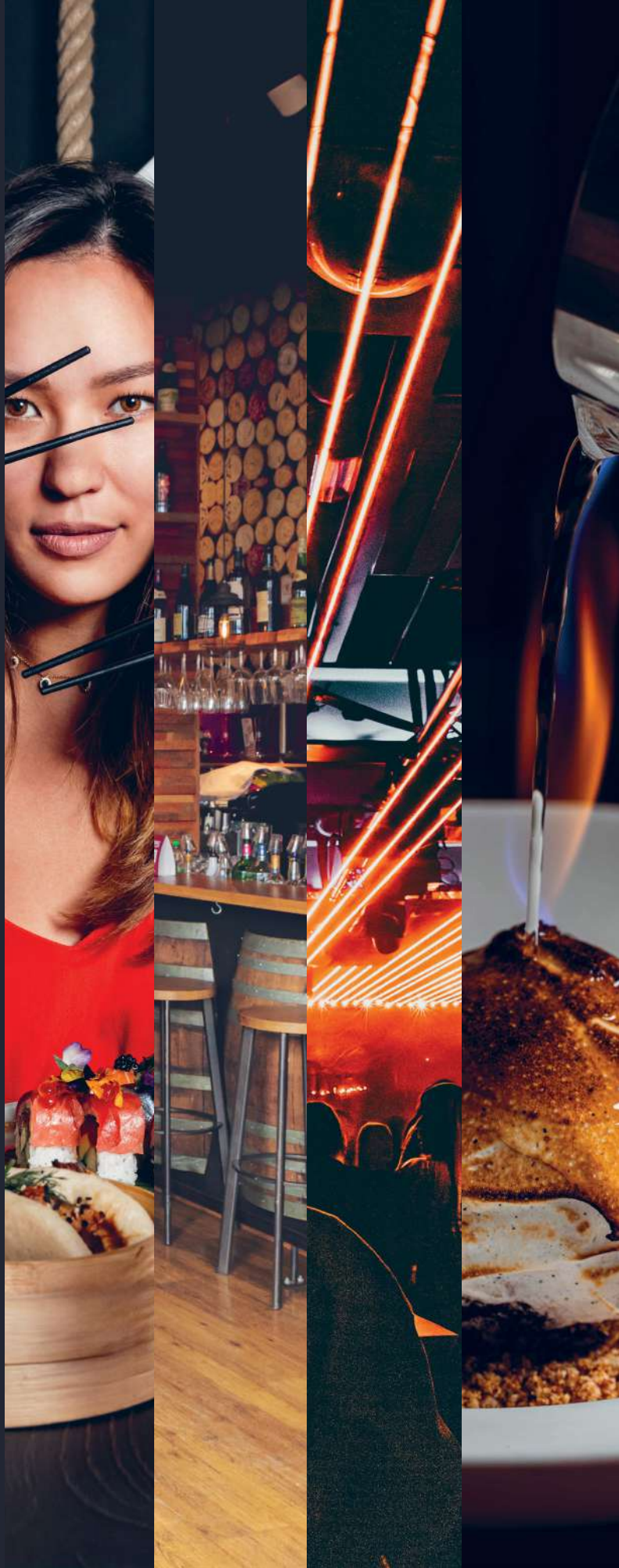
Flavors journey

NAGA

From here and beyond



Learn more about our venues here



EXPLORE THESE VEGETARIAN EATERIES

Plant-based cuisine is growing in popularity in the Grand Duchy, where vegans and vegetarians are spoiled for choice when it comes to dining out.



LOKAAL

★ BEST SUNDAY BRUNCH

🏠 18, Place d'Armes

"Plant-based comfort cuisine" such as vegan meatballs or bao buns with carrot, red cabbage and sesame, plus a buffet Sunday brunch.

REED

★ BEST BURGERS

🏠 25, Boulevard Royal

If you're craving meat dishes, then try Reed's 100% vegan burgers with home-made relish and veganaise, or the currywurst.

BEET

★ BEST TERRACE

🏠 26, Place Guillaume II

Jackfruit chilli, spicy peanut curry, or truffle mac 'n' cheese, this restaurant's first floor terrace gives you vegetarian food with a view.

GLOW

★ BEST BREAKFAST

🏠 2, Rue Xavier de Feller

Tuck into a big breakfast of vegan sausage, scrambled tofu, roast potatoes, tomatoes and white beans, or try the daily specials such as sweet potato and ginger soup at this long-established veggie eatery.

LA DISTILLERIE

★ BEST HAUTE CUISINE

🏠 Château Bourglinster

Splurge on eight courses of vegan creations from award-winning chef René Mathieu who uses seasonal herbs, vegetables, and wild flowers.

AAL ECHTERNACH

★ BEST TRADITIONAL DISHES

🏠 38, Place du Marché Echernach

A monthly vegan Sunday brunch and the chance to try vegan *raclette* (melted cheese fondue-style) plus menu options such as beetroot gnocchi with walnut pesto.

RUCOLINO

★ BEST ITALIAN DISHES

🏠 15, Rue du Commerce Dudelange

An aperitif board of white focaccia with three types of pesto – basil, carrot, and dried tomato, plus home-made family recipes including Nonna Lina's fried polenta or Rara stew made with mushrooms, snow peas and red wine.

100%
ORGANIC

www.naturata.lu

- 10 Naturata Bio-Marches, 2 Naturata Beauty & Culture Stores, 2 Bistros
- Fresh fruit and vegetables from organic and biodynamic farming
- Professional and friendly advice at the bakery and cheese counters, as well as the butcher's counters (Munsbach and Rollingergrund only)
- Up to 9000 products
- Large choice of gluten free and vegan food
- Certified natural cosmetics, dietary supplements



NATURATA
Bio Marché

OPEN: Monday to Friday 8:00am - 7:00pm | Saturday 8:00am - 6:00pm

Dudange | Erpeldange | Esch-Belval | Howald | Marnach | Merl | Munsbach | Rollingen/Mersch | Rollingergrund | Windhof

SAMPLE LOCAL VINTAGES WITH THESE WINE PRODUCERS

Visit these wine and Crémant producers in Luxembourg's Moselle region with friends or family for a fantastic excursion to sample locally produced wines.

LUXEMBOURG'S VINEYARDS

- ➔ 1,300 hectares of vineyards and 400 grape growers and wine producers.
- ➔ Some 10,000 hectolitres of wine produced annually or 13 million bottles.
- ➔ Rivaner, Auxerrois, Pinot Gris, Riesling, Pinot Blanc, Pinot Noir, Elbling, Gewürztraminer, Chardonnay and Crémant wines produced in Luxembourg.



CAVES ST MARTIN

📍 Remich

A tour of the cellars of the Crémant producer gives you details on grape growing and the fermentation process in a cellar which was dug into the hillside in the early 20th century.

DOMAINES VINSMOSELLE

📍 Wellenstein

Founded in 1930 and the largest site of this wine cooperative, a guided tour will help you discover the secrets of its 240 vintners, whose vineyards stretch from Schengen to Wasserbillig.

CAVES BERNARD- MASSARD

📍 Grevenmacher

Luxembourg's biggest producer of sparkling wines, operated by the same family for five generations. Whilst you can taste a bottle of their Crémant at home, have you tried their Riesling or Pinot Blanc?

DOMAINE HENRI RUPPERT

📍 Schengen

This is the winery to visit if you're looking for a chilled night out, and whilst the tasting prices aren't the cheapest, nothing can beat their covered terrace overlooking the Moselle River.

DOMAINE VITICOLE SCHUMACHER-KNEPPER

📍 Wormeldange

A family owned winery operating since 1714, producing wines and Crémant which you can taste and purchase on site.

DOMAINE ALICE HARTMANN

📍 Wormeldange

A small but popular Crémant and wine producer, you can visit this winery with its pretty garden on a Friday afternoon.

DOMAINE GOLDBERG, BENOÎT & CLAUDE

📍 Remich

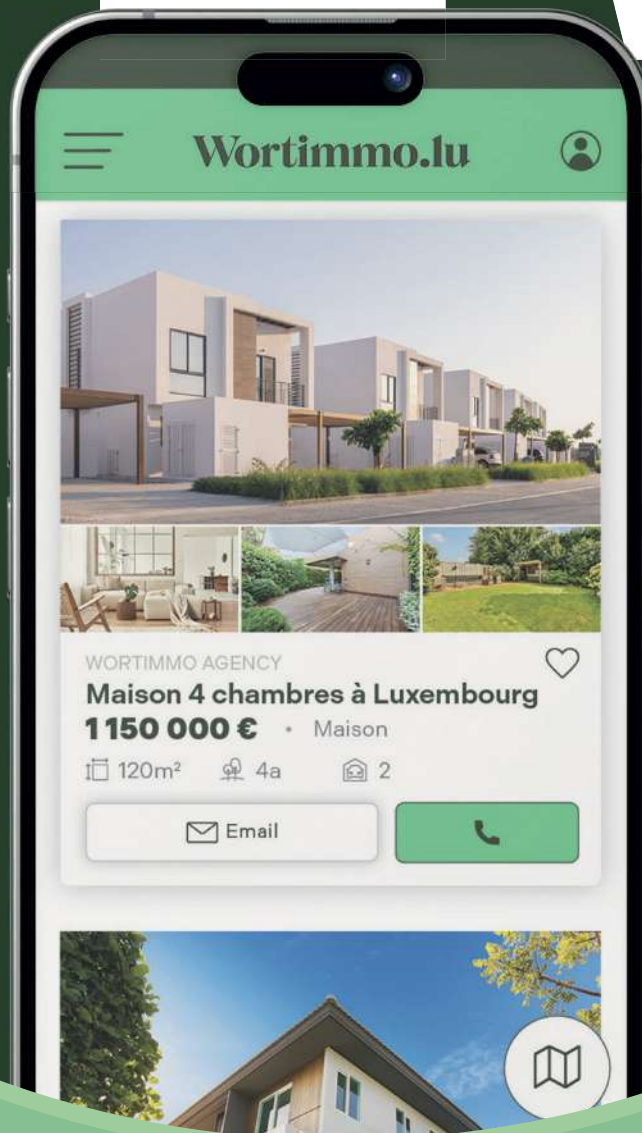
An amazing view where your wine is delivered to you in wicker baskets with a good selection of cheese to accompany it.

CAVES DE CRÉMANT POLL-FABAIRE

📍 Wormeldange

This gorgeous Art Deco building was the former production site for this popular Crémant, where you can sit on the terrace by the riverside and sample a glass with a bite to eat.

NEW



Wortimmo.lu

Your home matters.

LEISURE & TRAVEL

You can really get to know a country and a region in your leisure time, so we've listed a few suggestions on things to do.

If you get your inspiration from **modern art**, we cover the city's contemporary art galleries and what you can expect to see at them. Families looking for spaces to **explore science** interactively can check out our suggestions, which include the Science Centre and the Natural History Museum but also several other spots to discover.

If **shopping** is more your bag, but you want to do so sustainably, take a look at our directory of second-hand clothes shops which offer everything from designer names to hand-curated vintage items, or places to kit out your trendy teens.





EXPLORING THE GREATER REGION

If you want to explore the region, read our article on **day trips** by train, where you can leave the car behind and head to places in Luxembourg, or Roman towns in Germany and the buzzing cities of the Alsace and Lorraine provinces.

Further afield we also take a look at **cultural capitals** close to the Grand Duchy, with highlights of what you can see and do including Dusseldorf's little Tokyo, Maastricht's illusions museum, Cologne Cathedral, Strasbourg's astronomical clock, Bonn's Beethoven Museum, Brussels' comic strip heritage, and Dijon's botanical gardens.



DAY TRIPS *BY TRAIN*

Avoid the hassle of parking and take the train to discover Luxembourg and the Greater Region.



Discover the north or south of Luxembourg, the historical Roman towns of Germany and the buzzing cities of France's Alsace-Lorraine region.

You should check the CFL website for planned disruptions.

📱 www.cfl.lu

LUXEMBOURG

CLERVEAUX

Visit the castle to see the world-famous 'Family of Man' photography exhibition, and the museums on the Ardennes counter-offensive or one featuring model castles and palaces. Alternatively, hike up to the Abbey of Saint-Maurice.

WASSERBILLIG

Visit the aquarium then take the ferry to the German town of Oberbillig. Alternatively try a circular cultural walking loop with information panels about the history and natural environment of the region.

BELGIUM

LIBRAMONT

Be at the Celtic Museum in less than an hour to discover life from the 5th to 2nd century BCE, with interactive games for children.

VIELSALM

Home to *La Maison du Pays de Salm*, an interactive folklore museum that focuses on the legend of the witches of Vielsalm. After your visit you can take the 4.5km Witches Walk.

GERMANY

TRIER

This historical town filled with Roman ruins, including an amphitheatre, baths, and the Porta Nigra, is also home to a toy museum and the spectacular St Peter's Cathedral, in addition to a host of restaurants.

COCHEM

Dominated by the 1,000 year old Reichsburg, you can take a chairlift to the Pinnerkreuz lookout point for spectacular views over the town, before visiting the castle museum.

FRANCE

NANCY

Place Stanislas is a Unesco world heritage site with its gilded wrought iron gates and rococo fountains. You can visit the fine art museum, aquarium, and natural history museum, or relax in the Parc de la Pépinière and feed the deer and donkeys.

METZ

Art lovers will appreciate the Pompidou Centre, and the art and archaeology museum, close to the city's famous gothic cathedral. A great spot for outdoor dining too.

All about your Mobility, Travel & Business Solutions



www.emile-weber.lu



Scan here for
more informations
www.emile-weber.lu

DIRECTORY OF SECOND-HAND & VINTAGE CLOTHING STORES

Want a designer dress without the price tag or prefer a sustainable wardrobe? Check out our directory.

ROYAL SECOND HAND

- 📍 13 Boulevard Royal
- 🕒 Tuesday to Saturday 12.00 to 19.00
- 🛒 Designer brands and high-end items in good condition.



FIRST & SECOND HAND CONCEPT STORE

- 📍 120 Val St Croix
- 🕒 Tuesday to Friday 13.00 to 17.00, Saturday 11.00 to 17.00
- 🛒 Designer clothes and accessories for women and men.

LENA

- 📍 17 Avenue de la Faiencerie
- 🕒 Tuesday to Saturday 13.00 to 18.00
- 🛒 From Hermes scarf to Guess watch, with plenty of designer items.



TROUVAILLES

- 📍 60 Rue du Fort Neipperg
- 🕒 Monday to Saturday 9.30 to 19.00
- 🛒 Bargain coats, jackets, clothes, bags and shoes great for teens or those in their first job.

PARDON MY CLOSET

- 📍 19 Avenue Monterey
- 🕒 Tuesday to Friday 11.00 to 19.00, Saturday 11.00 to 18.00
- 🛒 Hand-picked second-hand brand items sometimes stocking Chloe and Vivien Westwood.

THE AA

- 📍 136 Rue de Bettembourg, Fentange
- 🕒 Monday to Friday 12.00 to 18.00, Saturday 11.00 to 18.00, Sunday 14.00 to 18.00
- 🛒 Well-selected real vintage clothing, accessories and much more.

LÈT'Z REFASHION -

- 📍 8-10 Rue Genistre
- 🕒 Wednesday to Friday 11.00 to 18.00 (Tuesday until 17.00) and Saturday 10.00 to 18.00
- 🛒 Caritas-run boutique selling hand-picked second-hand clothes, up-cycled local designs and offering sewing workshops and fashion swaps.

DE VOUS À ELLES

- 📍 14 Rue Beaumont
- 🕒 Tuesday to Saturday 13.00 to 18.00
- 🛒 Retro designer items with a focus on handbags, shoes and jewellery.

KLEEDERSTUFF (CARITAS)

- 📍 Luxembourg City, Esch, Redange, Mersch & Diekirch
- 🕒 Vary according to store
- 🛒 Very low cost with money donated to the charity.

THE VINTAGE STORE LUXEMBOURG

- 📍 8-10 Rue Genistre
- 🕒 Wednesday to Saturday 11.00 to 18.00 and Tuesday until 17.00
- 🛒 Unique vintage clothing like a Korean biker jacket, original Levi's 501, and unusual army surplus.

VINTAGE MO(O)D

- 📍 18 Rue Geespelt, Livange
- 🕒 Monday to Friday 10.30 to 18.30
- 🛒 Clothes donated with everything from designer to basic brands.

OUTFLIPP

- 📍 18 Avenue Charlotte, Differdange
- 🕒 Tuesday to Friday 10.00 to 18.00, Saturday 9.00 to 17.00
- 🛒 Donate clothes to get a 10% discount on reasonably price second-hand items including clothes.

CHILDREN'S CLOTHING

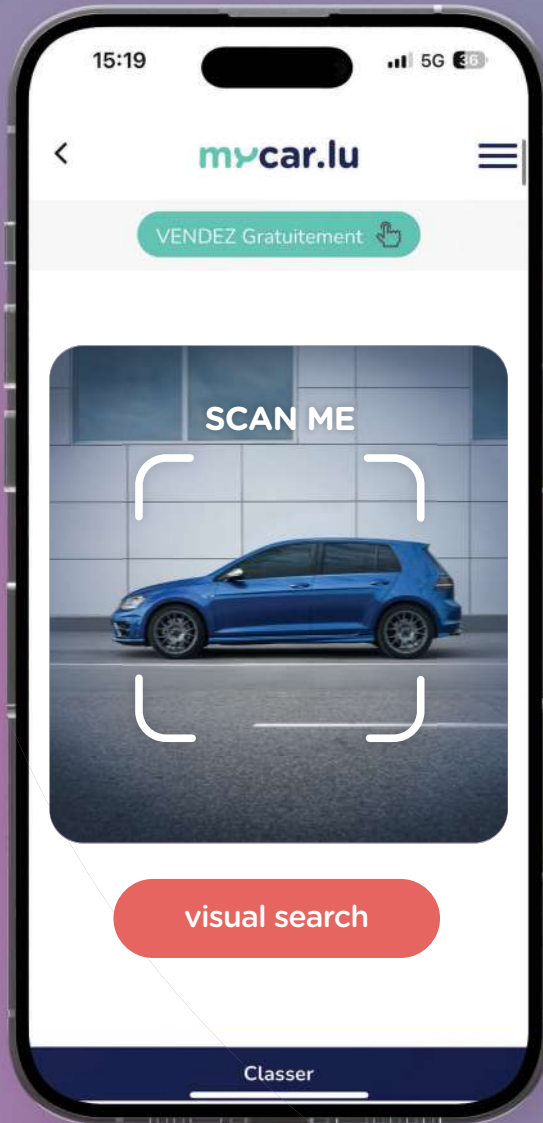
LIGUE HMC

- 📍 75 Route d'Arlon, Capellen

SECOND-HAND 4 KIDS

- 📍 Kennedy Shopping Centre, Ettelbruck

Revolutionise the way you choose your car !



Scan & find your next car in just a few seconds !



Download the app and try it out, it's **FREE**



GET IT ON
Google Play

Download on the
App Store



mycar.lu

your advertising website in Luxembourg

SCIENCE – WHERE TO EXPLORE IT

Are your children budding scientists?

Try these places to keep them busy with their scientific explorations.

Luxembourg has a strong commitment to science, including ground-breaking medical research and investment in space technology.

Families can learn about the power of physics, chemistry and biology in a hands-on way at these places:

NATURAL HISTORY MUSEUM (LUXEMBOURG CITY)

Ten permanent exhibition rooms bring to life natural history. Find out how our planet was formed, or marvel at animal and insect specimens, with a chance to take part in regular workshops. The museum also co-hosts the biennial Science Festival, every two years in November in Grund.

LUXEMBOURG SCIENCE CENTRE (DIFFERDANGE)



An interactive science playground featuring 70 different hands-on science stations, and laboratories dedicated to thematic shows, with animators on hand to demonstrate how things work.

TUDOR MUSEUM (ROSPORT)

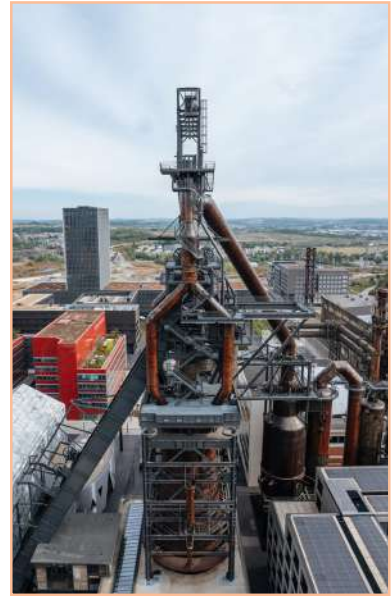
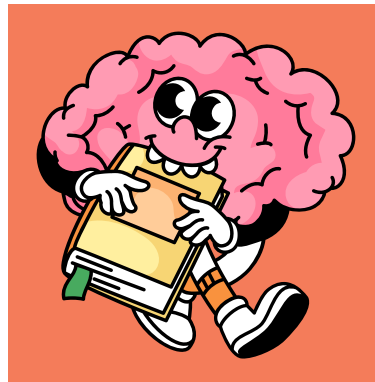
Immerse yourself in the world of electricity and Henri Tudor, to see how it has transformed our lives in agriculture, transport and even street lighting. Activities include making a solar-powered flower or robot.

LUXLAIT VITARIUM (ROOST/BISSEN)

A “mooseum” with a difference, find out if you can run as fast as a cow in the interactive playground, then tour the dairy and participate in a workshop.

PARK SËNNESRÄICH (LULLANGE)

See, hear, touch, smell and taste – use your five senses at different indoor and outdoor stations at this park which features a large garden, playground and labyrinth, and a giant AirTramp cushion for bouncing.



BLAST FURNACES (BELVAL)

Visit the City of Science and climb the steps of furnace A to the former charging platform, for breathtaking views of southern Luxembourg. Information panels tell the story of iron production and how the furnaces worked.

LABORATORIUM (ROESER)

Younger children can listen to the heartbeat of a snail, slide next to an ant, or become an alien or astronaut at this science spot, where visitors can meet Rango the chameleon, touch Tango the snake, or play with Gagarin the guinea pig.



Green electricity and natural gas provider

Need some energy to move in?



Monitor your consumption on my.enovos.lu



Online subscription
subscribe.enovos.lu/s



Welcome to Luxembourg

As the leading supplier and producer of renewable energy in Luxembourg, we offer you 100% green electricity and natural gas. Subscribe online and monitor your consumption on your customer portal my.enovos.lu

Energy for today. Caring for tomorrow. enovos.lu



VISIT THE CITY'S MODERN ART GALLERIES

Inspiration for contemporary and modern art lovers.

The Grand Duchy has no shortage of galleries and venues to view modern and contemporary art, both international and emerging local artists.

MUDAM

This is the premier museum for modern art in Luxembourg, housed in a building that fuses historical with modern architecture, designed by renowned architect IM Pei. The diverse collection of 700 contemporary artworks in all media includes commissioned pieces, whilst temporary exhibits showcase upcoming artists. Tours are available in English, and there are workshops for adults and children.



CASINO LUXEMBOURG

Located in the heart of the city, this contemporary art centre focuses on experimental and avant-garde art, with artist residencies, frequently changing exhibitions, and education programmes. This is the place to see the latest art trends, and it's open late on Thursdays.

VILLA VAUBAN

Known for its classical art collections, this city gallery also hosts modern and contemporary art exhibitions in its beautifully restored 19th century villa. There are regular guided tours in English and family workshops.

CERCLE CITÉ RATSKELLER

Head to the cellar gallery at the side of this grand building which regularly features modern art exhibitions highlighting the work of contemporary Luxembourgish artists.

ROTONDES

This arts and culture venue housed in two former railway roundhouse workshops holds exhibitions and events which focus on modern art, exhibiting emerging artists including those in urban and graphic art, plus video projections and installation art, often interactive.

ART WEEK

📅 22-24 November 2024

Annual, grand-scale contemporary art exhibition hosted at Glacis displaying international and emerging artists from some 80 galleries and artist collectives, with a programme of tours, film screenings, conferences and talks.

CASINO 2000

YOUR DAILY DOSE OF ENTERTAINMENT

CASINO 2000, one of Luxembourg's most visited tourist sites, combines all the elements for fun and excitement all year round.



Located 18 minutes from Luxembourg City, it is a leading player in the field of games and entertainment, organising and producing over 200 concerts and events a year.

Its many recently refurbished spaces offer one of the most attractive offerings in the Greater

Region (more than 300 slot machines, Black Jack and electronic gaming tables). It's a warm and pleasant place to have a drink, eat, dance and have fun. There are two restaurants, a snack bar, a cocktail bar, a sports bar, and a magnificent, fully modular events area.

At the **Purple Lounge**, in an urban, chic and raw decor, the restaurant offers a range of international dishes. Gourmet, contemporary and elegant, Restaurant **Les Roses** invites gourmets to get together. If you're just a little hungry, head to the **Snack Bar**, where you'll find all sorts of tempting sandwiches and snacks. Cocktail lovers will find themselves at **Cooper's**, the temple of the refined drink, on Fridays and Saturdays. Resolutely modern, this new **Offside Bar & Games** space will be the place to be for all sports fans, as well as fans of games, betting and fun!

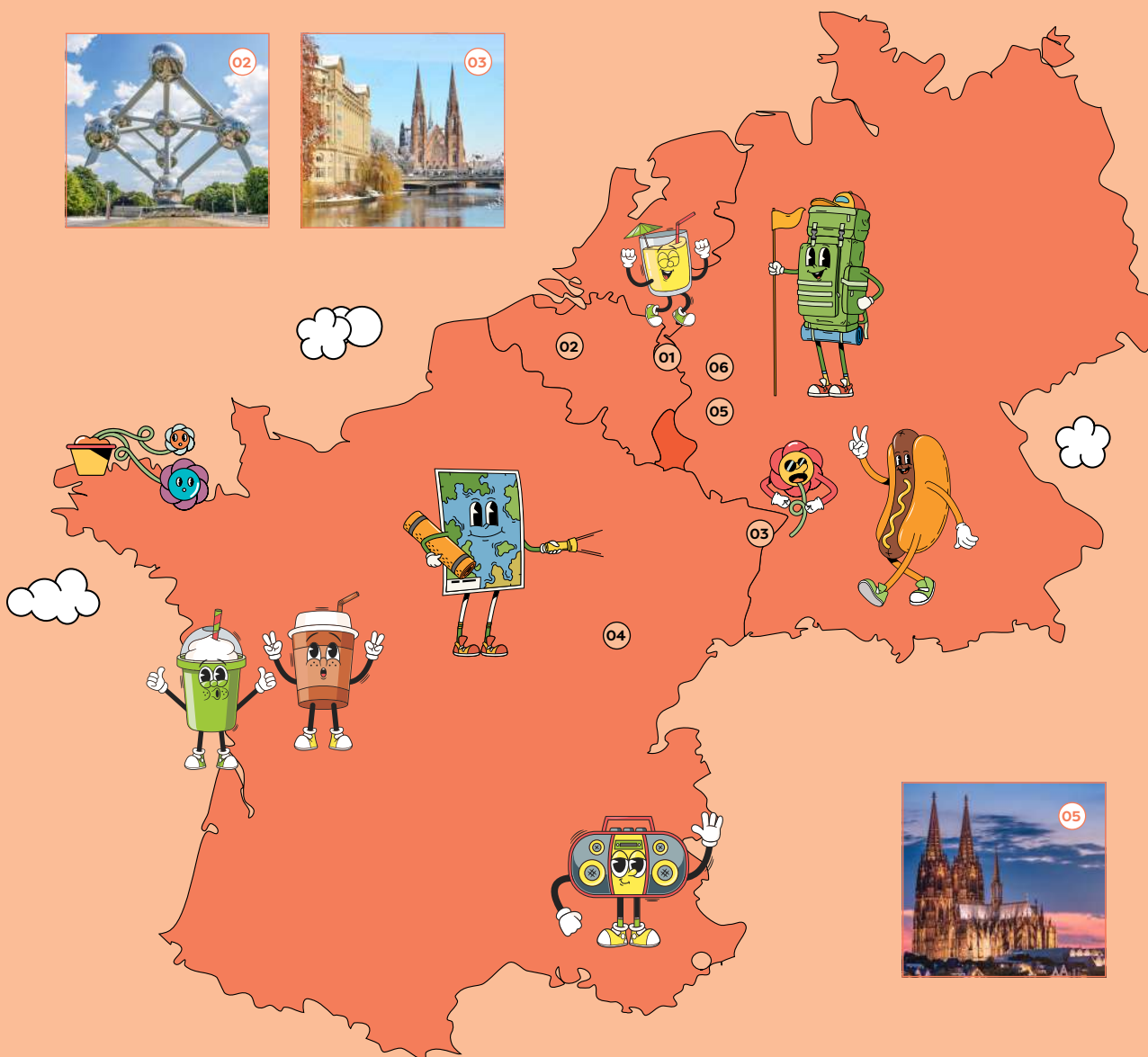


The Meetings & Events department organises all kinds of events for up to 2,100 people at **CHAPITO** and the **CASINO 2000** sales outlets.



CULTURAL CAPITALS TO EXPLORE IN THE GREATER REGION

Take a weekend trip to one of these cultural capitals close to Luxembourg. Check out Dusseldorf's Little Tokyo, Maastricht's illusions museum, Brussels' comic strip heritage, Cologne Cathedral or Beethoven's birthplace in Bonn.





01 MAASTRICHT

Dutch cobbled stoned city surrounding the lovely Vrijthof Square.

- ➔ Browse books at the Selexyz Dominicanen Bookstore, a converted 13th Century Dominican church.
- ➔ Take a quiet moment at the Basilica of Saint Servatius.
- ➔ Walk the fortifications to spot Hell's Gate, built 800 years ago.
- ➔ Visit the natural history museum to see the remains of dinosaurs and giant turtles.
- ➔ Try the upside down room and Beuchet chair at the Museum of Illusions.

02 BRUSSELS

The Belgian capital is Unesco listed and features sumptuous guildhalls.

- ➔ Take a virtual tour back to Grand Place during the 17th century.
- ➔ Visit the City Museum for art and sculpture including the original 400-year old statue of Manneken Pis.
- ➔ Discover animation at the art deco Comic Strip Centre, and the Hergé Museum for all things Tintin.

03 STRASBOURG

Home to the European Parliament for six months, a tram system makes it easy to navigate.

- ➔ Watch the famous animated figures on the astronomical clock at the Cathedral of Notre Dame.
- ➔ Take a stroll around the canals and narrow walkways flanked by half-timbered houses at Petite France.
- ➔ Relax by the lake, rent boats or see the city's symbol, the stork, together with flamingos, monkeys and goats at the Parc de l'Orangerie.



04 DIJON

Not just famous for mustard, this historic town was once home to the Romans.

- ➔ Visit the *Musée de la vie Bourguignonne* for life-size displays of how the streets, shops and family kitchen would have been 100 years ago.
- ➔ Relax in the city's botanical gardens where the natural history museum is also located.
- ➔ See re-enactments from both the Gaul and Roman perspective at the nearby Gallo-Roman Museum in Alesia.

05 BONN & COLOGNE

These two cities, ravaged by war, are located close enough to discover them both over a long weekend.

- ➔ Visit the German National Museum of Contemporary History at Bonn to see a piece of the Berlin Wall and a fragment of the moon.
- ➔ Visit Beethoven's birthplace for an insight into the composer's life.
- ➔ Museum Ludwig is a must for pop-art fans visiting Cologne, with works by Andy Warhol and Roy Lichtenstein.
- ➔ Despite damage from 70 bombs, Cologne Cathedral is a Unesco world heritage site, housing religious artworks.
- ➔ Elephants, hippos, camels and an aquarium await you at Cologne Zoo, or try the world's fastest multi-launch rollercoaster at nearby Phantasia Land.

06 DÜSSELDORF

Amazing architecture and a slice of Japan in this rejuvenated harbour city.

- ➔ Visit the 13th century castle tower on Burgplatz.
- ➔ Head to one of the town's 300 bars in an area called Längste Theke der Welt (*Longest Bar in the World*).
- ➔ Home to one of the biggest Japanese communities in Europe, visit Little Tokyo.
- ➔ K20 and K21 house art by Klee, Kandinsky, Braque and Pollock in the city's museum of modern art.

DISCOVER LUXEMBOURG'S UNDERGROUND HISTORY



The Bock and Pétrusse casemates are two networks of defensive tunnels which over the years have been occupied and fortified by the rulers of Luxembourg from the House of Burgundy and the Holy Roman Empire, to the Habsburgs.

Originally extending for 23km, with some as deep as 40 metres, these tunnels were capable of accommodating thousands of soldiers, horses and equipment. During two world wars, the casemates sheltered 35,000 people during bombardment. Today the city's fortifications, including the casemates and parts of the old town, are

listed as UNESCO World Heritage sites.

PÉTRUSSE CASEMATES

Place de la Constitution

The Spanish modernized the original medieval fortifications with large bastions, including the Beck, atop of which stands the Golden Lady statue. The half-moon shaped, so-called *Ravelin du Pâté* was built by the Spanish in the 1670s to protect the fortress' main wall, but the casemates subterranean defenses were blasted out of the rock by the Austrians between 1746-51, of which 17km of tunnels remain –

making these the longest casemates in the world.

After the Treaty of London in 1867 the casemates became first a shooting range and were used to grow mushrooms. In the 20th century they became a site for concerts, bazaars and were used by merchants to store wine and champagne.

Early visitors had to use torches in 1933, but today cutting-edge scenography and light installations bring history to life.

Open daily, tours in English are held Monday to Saturday at 15.00 and at 14.30 on Sunday.

Locationpartner:



Run for charity

LUXEMBOURG TIMES
www.luxtimes.lu
businessrun 24



REGISTER NOW!

Finish & Party at Coque
5 km Business Run

19 SEPTEMBER 2024 | 7 P.M.

LUXEMBOURG TIMES



BOCK CASEMATES

Montée de Clausen

Built in 1745 by the Austrians into the Bock Promontory where Count Siegfried built his castle in 963, thus coining the capital's name of the "Gibraltar of the North". More than 1000 square metres, 110 metres long and 7 metres wide, these tunnels were visited by Emperor Joseph II of Austria in 1781, and Napoleon in 1804.



- ➔ Visit the archaeological crypt and former castle.
- ➔ See the main gallery with gun chambers housing up to 50 cannons.
- ➔ Walk through the former castle prison in the foundations of the belfry for a view towards the Kirchberg Plateau.
- ➔ Gaze down the 47 metre-deep well to spot Melusina, the Count's mermaid wife.
- ➔ Visit the 18th century bedroom and study of Habsburg Field Marshall von Bender.
- ➔ View the Spanish city walls of the upper town, the Grund, Neimënster Abbey, Vauban's barracks, the Rham plateau, the viaduct and the remains of the city wall turrets.
- ➔ Pass through the iron gate where 8 cannons defended the lower town, and the Grund Battery.
- ➔ Descend the winding staircase which runs under the street, and the castle bridge which leads onto the Corniche balcony.

Open daily for self-guided visits of 45 minutes or guided tours.





What should I do with my problematic waste ?



SDK Geliebte
Klimaschutz
SuperDrecksKëscht®

EXPLORE THE CITY'S HISTORY BY FOOT

Encounter the capital's sights and architecture on these walking tours with a knowledgeable guide or on our self-guided routes.

WENZEL WALK

From the Bock Promontory to the Saint Esprit Plateau, down to Grund and the wall built by Wenceslas II in the 14th century, discover 1,000 years of Luxembourgish history.

CITY PROMENADE

Discover the Grand Ducal Palace, and the history behind the city's squares from Place d'Armes and Place de la Constitution, to Place Guillaume II.

KIDS' TOURS

Children can join Count Siegfried and his mermaid wife Melusina to crack the code and receive a reward. Alternatively

they can find the various animals hidden in the old town, from horses and lions to lizards and unicorns, on the City safari family tour.

MANSFELD CIRCUIT

Scan QR codes or read information panels on this walking circuit around the ruins of La Fontaine palace built by Count Mansfeld in Clausen in the 1540s.

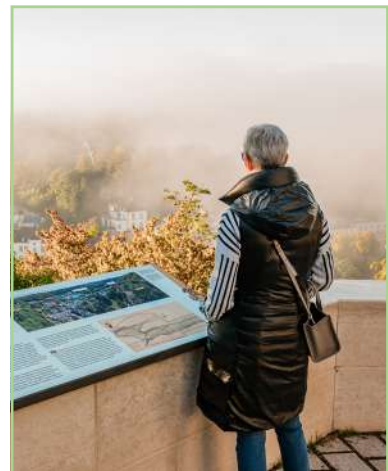
VAUBAN WALK

Uncover 17th century Luxembourg through the eyes of French Military strategist and engineer Vauban, who built numerous city fortifications in the 1680s using 3,000 labourers.

Discover more guided walks on architecture, history and nature at

 www.luxembourg-city.com/en/tours

or visit the tourist office on Place Guillaume II.



EXPAT TO EXPERT – BECOME A GUIDE!

Are you an expat with a passion for the capital's history? If you want to share it with other expats and newcomers you can apply to become a LCTO guide.

- ➔ Share your passions for the city on the LCTO website's page *City adventures by locals*.
- ➔ Provide content or collaborate on social media platforms.
- ➔ Become an official tour guide with LCTO training courses.
- ✉ partners@lcto.lu

BIKE OR MINI-TRAIN TOURS

Hop on an e-bike with a phone holder for a tour of the UNESCO World Heritage sites using the specially tailored *sightseeing.lu* app with a map and audios, texts and images.

Board the "City train through the old town" (*March to November*) for a unique tour of the city with an on-board audio guide in several languages including English.



RELAX IN THESE CITY GARDENS & PARKS

Enjoy time in nature and some family fun in these city parks and playgrounds.

Luxembourg is one of Europe's greenest cities, with a number of parks and gardens dotted around the capital and its borders.



THE CENTRAL GREEN LUNG

Just a stone's throw from the old town four parks – Edouard André, Edmund Klein, Kinnekswiss and Pescatore, create a back-to-back central green space. Incorporating a small lake, fountains, statues, a pirate-themed playground, and a contemporary art gallery. In summer there are open-air concerts and yoga, in winter funfairs and food festivals.



PÉTRUSSE PARKS

This tree-filled park is covered in blossoms in spring, and russet shades in autumn. Straddling the river, it's home to St Quirin Chapel, built into the rocks. The park contains one of Europe's largest skateboard parks, a kids' playground, soccer and basketball courts, and an outdoor gym will be opening soon. Several paths lead up to the old town and Gare district with hidden, peaceful nooks with benches.

MERL PARK

An artificial pond with ducks and sail boats, surrounded by a green park, rose garden and playground, this is a fun family destination with trampolines in summer, and a restaurant with a large terrace.

BAN DE GASPERICH PARK

The city's newest, award-winning park combines lawns, dry grassland, marshy areas, and an alluvial forest, forming a vital homeland for local flora and fauna. A recreational area hosts concerts, and includes a multi-sports pitch, beach volleyball and *pétanque* courts, a playground and brasserie, whilst walkers and runners can use a 4km network of branching paths that surround a large pond.

KLOSEGRÄNNCHEN ARBORETUM & KIRCHBERG PARK

A green ribbon on the Kirchberg Plateau, with outdoor sculptures, picnic spots, and a lake with a restaurant which hosts festivals. The arboretum, located near the district's hospital, contains tree species and rock samples from member states of the European Union and is home to a rare species of bat.

BAMBËSCH

Located in the forests at the edge of the city, accessible by bus line 33, this park has plenty of walking trails and an extensive, recently refurbished, wood playground. Children can discover new scientific concepts in the water play area, try the wooden parkour or sound maze, and have fun on the swings, slides and zip wire. Themed around the historic landmarks of the city, including a replica Fort Thüngen, there are several picnic spots under the trees.



LUGA 2025 IS COMING!

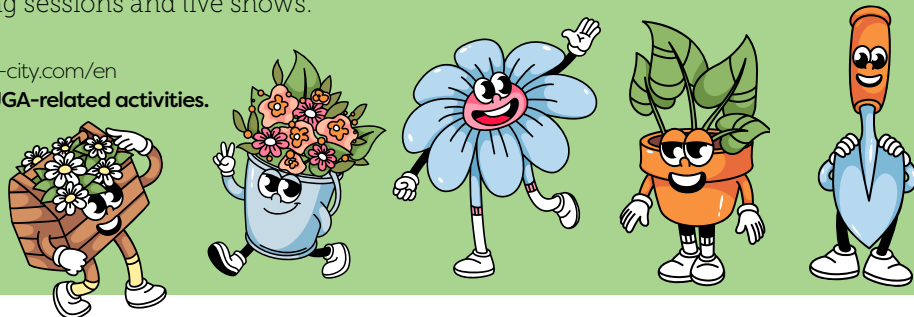
The **Luxembourg Urban Garden open-air exhibition** will take place **7 May to 18 October 2025**.

Where: Municipal parks Edouard André and Pétrusse, in the Alzette valley and Kirchberg quarter.

What: Colourful gardens and meeting spaces will provide an open-air laboratory for ideas, interaction and experimentation. Question your perceptions and awaken your senses.

How: 11km of trails to discover the urban ecosystem in which we live, to help create a greener, more sustainable capital. A programme of 1,000 events including conferences, sport activities, relaxation sessions, creative workshops, guided tours, educational walks, gardening sessions and live shows.

 www.luxembourg-city.com/en
for updates on LUGA-related activities.



ENERGY FROM THE SUN

TAKE ADVANTAGE OF HIGH SUBSIDIES (UP TO 90% OF COSTS)
FOR INDIVIDUAL AND BUSINESS CUSTOMERS
AND SCHEDULE A MEETING TODAY!



Photovoltaic



Energy storage



Thermal modernization



Heat pumps



Air conditioning



Electric instalations



EV chargers

VOLTMAX SARL

☎ 661 770 871 ☎ 661 444 831

✉ INFO@VOLTMAX.LU

We speak in:



visit

www.voltmax.lu

lalux⁺
ASSURANCES

DON'T WORRY
be happy

www.lalux.lu