



2023

# EXPAT HUB

*Magazine*

by LUXEMBOURG TIMES





# INVEST WITH A MULTI-ASSET BANK ACCOUNT

[swissquote.lu](https://swissquote.lu)



**All investments carry a degree of risk.**

Consumer protection rules may not apply to Digital Assets. Swissquote Bank Europe SA – RCS B78729.  
Bank licensed in Luxembourg under supervision of the CSSF.

# YOUR GUIDE TO LUXEMBOURG

Welcome to the second edition  
of the Expat Hub Magazine.

Whether you have just arrived in Luxembourg, have been living in the country for years or even grew up here, everyone needs a go-to place for information about all aspects of life in Luxembourg.

Moving to a new country can feel daunting, which is why in this year's magazine we have included a dedicated section for newcomers to find all the information you need, from registering at the commune to finding a home, making friends and getting to know your new neighbourhood.

The magazine also gives you the rundown on activities to enjoy during your spare time, places to explore, or it can simply point you to the country's gyms and yoga classes or best spots to go for Sunday brunch.

This edition provides an 'at a glance' guide to nightlife, including clubs, comedy nights and live music venues. It also gives insider tips on places to visit, trips by train, and information about the UNESCO World Heritage treasures within the Grand Duchy.

Our family guides will help you understand the various school options and suggest ideas of fun things to do with your children, such as family walking trails.

We could not squeeze everything into one magazine, so for more articles about every aspect of life in Luxembourg, visit the Expat Hub section of the Luxembourg Times website, which has pages on all of the areas mentioned above and much more.

For the latest news from Luxembourg, Europe and around the world you can download the Luxembourg Times app, visit us online or via your favourite social media platform.

**Heledd Pritchard**  
Luxembourg Times



## IMPRINT

**PUBLISHER:** Mediahuis Luxembourg S.A.  
31, rue de Hollerich, L-1741 Luxembourg  
Tél. +352 4993 9000

**CEO:** Paul Peckels

**WRITER:** Sarita Rao

**ARTISTIC DIRECTION & DESIGN:**  
Zoë Mondloch | [www.zoemondloch.com](http://www.zoemondloch.com)

**COORDINATION:** Gladys Donneaux

**ADVERTISING:** Mediahuis Luxembourg S.A. - Regie.lu  
email: [regie@regie.lu](mailto:regie@regie.lu)  
brain&more - agence en  
communication  
email : [brain@brain.lu](mailto:brain@brain.lu)

**PRINT:** IPP Printers  
Emmastraat 6c - 4811 AG Breda - Nederland

**CIRCULATION:** 5,000 copies

**ISBN:** 978\_99987\_891\_2\_8

# LUXEMBOURG TIMES

MORE EXPAT HUB ARTICLES? SCAN ME:

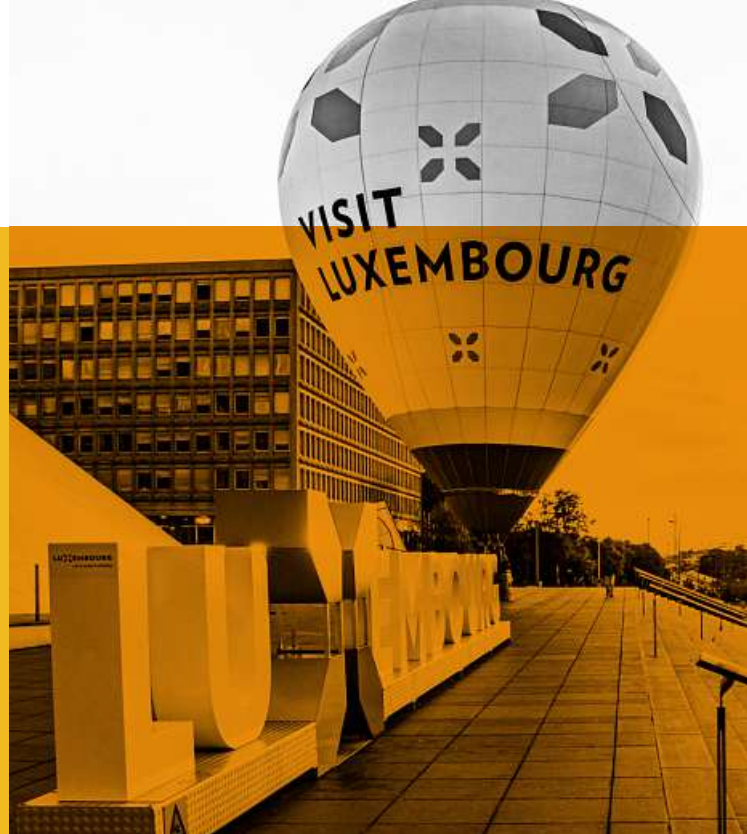


# TABLE OF CONTENTS



06-09

**WELCOME  
TO LUXEMBOURG**  
*DID YOU KNOW?*  
Luxembourg  
in numbers



**GETTING SETTLED  
IN YOUR NEIGHBOURHOOD**  
Living in Luxembourg

34-63





10-33

**A CHECK-LIST  
FOR ARRIVALS**  
Newcomer's Guide

64-75 **CHOOSING  
THE RIGHT SCHOOL**  
Education & Family

“

**Luxembourg has  
followed its path that has  
shaped our uniqueness.**

HSH Grand Duke Henri of Luxembourg,  
National Day speech 25 June 2015

”



**NIGHTLIFE,  
COFFEE, BOOKS  
& MORE**  
Leisure

76-103

104-110

**EXPLORING LUXEMBOURG'S**  
HISTORY, SIGHTS & PARKS  
City Tourism

# LUXEMBOURG IN NUMBERS

## THE HIGHEST MEDIAN DISPOSABLE INCOME

in the EU in 2021

[https://ec.europa.eu/eurostat/statistics-explained/index.php?title=Living\\_conditions\\_in\\_Europe\\_-\\_income\\_distribution\\_and\\_income\\_inequality](https://ec.europa.eu/eurostat/statistics-explained/index.php?title=Living_conditions_in_Europe_-_income_distribution_and_income_inequality)



## HIGHEST GDP PER INHABITANT (PURCHASING POWER STANDARDS) OF EU27 COUNTRIES



## University of Luxembourg ranked 4<sup>TH</sup> WORLDWIDE FOR ITS INTERNATIONAL OUTLOOK

in the Times Higher Education World  
University Rankings 2023.

[https://www.wfr.uni.lu/universite/presentation/rankings\\_accreditations](https://www.wfr.uni.lu/universite/presentation/rankings_accreditations)

## JUNE 2022, COST OF LIVING (AVE PRICE)

Litre of milk €1.54

Kilo of apples €3.22



Loaf of bread €3.19

Dozen eggs €3.79

## LARGEST EMPLOYERS IN PRIVATE SECTOR (2022)

Cactus Retail (4,440)  
Dussmann Luxembourg (4,420)  
Amazon.com (3,960)  
BGL BNP Paribas (3,940)  
Goodyear Dunlop (3,490)  
ArcelorMittal (3,460)  
PriceWaterhouseCoopers (3,040)  
Luxair (2,850)  
Deloitte (2,230)



## Luxembourg ranked 7<sup>TH</sup> IN LEGATUM PROSPERITY INDEX 2023 (AND 1<sup>ST</sup> GLOBALLY FOR SAFETY AND SECURITY)

<https://www.prosperity.com/rankings>

## Luxembourg is in the TOP 10 OF THE WORLD'S HAPPIEST COUNTRIES IN 2023

<https://www.research.luxembourg.org/en/2023-world-happiness-report-luxembourg-among-top-10-countries/>



The minimum wage  
for a skilled  
worker

**€3,009**

<https://www.luxtimes.lu/en/luxembourg/minimum-wage-to-top-3-000-mark-in-april-64243feede135b92361428ed>

GGFI ranks  
Luxembourg

## 5<sup>TH</sup> GLOBALLY

for its green financial  
credentials.

## 15<sup>TH</sup> OUT OF 110 COUNTRIES

in the Digital Quality of Life Index for internet affordability,  
quality, infrastructure and security.

<https://www.research.luxembourg.org/en/luxembourg-a-leader-in-the-eu-for-internet-quality/>



## LUXEMBOURG RANKS 13<sup>TH</sup>

most competitive country  
in the world.

Source: IMD World Competitiveness  
Ranking 2022

## Luxembourg ranks 8<sup>TH</sup> WORLDWIDE FOR RULE OF LAW

Source <https://www.tradeandinvest.lu/news/luxembourg-ranks-8th-worldwide-for-rule-of-law/>

22% OF LUXEMBOURG CITY is forest,  
34% of the country is forest

**HIGHEST POINT**  
Wilwerdange at 560m

Luxembourg ranks 5th out  
of 49 European countries for LGBTQ+ rights  
( Source: Rainbow Europe Index)

**BRUSSELS**  
225Km

**COLOGNE**  
197Km

70 castles and  
60 grand mansions

600km of cycle routes and  
700km mountain bike trails.

Land used for agriculture,  
silviculture and viticulture  
**86,6%**  
Built-up areas  
**10,2%**

Total N° of farms  
**1,869**  
Total cows  
**189,543**  
Total hens and  
chickens  
**170,591**

**SIZE**  
2586 km<sup>2</sup>

78 campsites

**TRIER**  
48Km

Households  
with internet access  
**99%**

124 BANKS

**LUXEMBOURG CITY**  
132,788

223 HOTELS

65,645  
Number of borrowed  
documents from  
National Library (2021)

530,858 VEHICLES  
**MOST POPULAR  
CAR BRANDS**  
1<sup>st</sup> Volkswagen, 2<sup>nd</sup> BMW,  
3<sup>rd</sup> Mercedes-Benz

**LOWEST POINT**  
Wasserbillig at 130m

€5,716  
Household disposable  
income (2020)

**DIFFERDANGE**  
28,600

**ESCH SUR ALZETTE**  
36,200

**DUDELANGE**  
21,600

**METZ**  
60Km

**STRASBOURG**  
222Km

Total population **645,400**  
Luxembourgers  
**341,200 (52.8%)**  
Foreigners  
**304,200 (47.2%)**  
(as at 1 January 2022)

57 km

82 km

# LUXEMBOURG

## CITY IN FIGURES

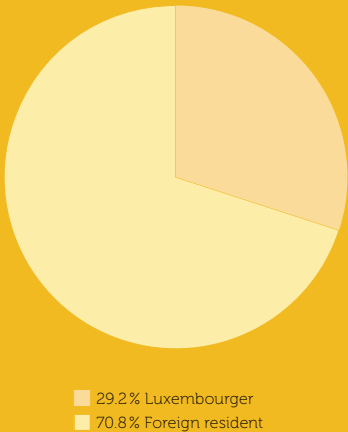
- ✓ Sources:
- VdL, 31 December 2022
  - <https://vinepair.com/articles/cities-with-most-michelin-stars/>
  - <https://www.cityshopping.lu/en/practical-information/10-reasons-why-you-should-shop-luxembourg-city>

**Size:** 51.73 km<sup>2</sup> **27.7%** agriculture **22%** forest **30%** buildings **8.7%** squares and streets



- 963** Count Siegfried builds his castle on the Bock Promontory
- Countess Ermesinde gives the town city status **1244**
- 1320** John the Blind of Bohemia builds new fortifications
- Luxembourg becomes a Duchy **1354**

TOTAL POPULATION  
**132,788**



HIGHEST CONCENTRATION  
OF MICHELIN STARS  
PER RESIDENT IN EUROPE

**1,000**  
RETAILERS  
&  
CRAFTSPEOPLE



**167 NATIONALITIES**

117,685 EUROPEANS  
7,796 ASIANS  
4,040 AFRICANS  
3,027 AMERICANS

**EU NATIONALITIES  
LIVING IN THE CITY**

1. Luxembourgish 38,740
2. French 20,916
3. Portuguese 12,059
4. Italian 9,697
5. Spanish 4,974
6. Belgian 4,470
7. German 3,860
8. Romanian 2,481
9. Greek 2,108
10. Polish 1,823

# A M C H A M LUXEMBOURG

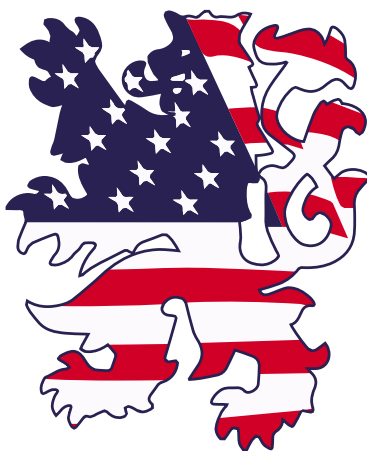
AMERICAN CHAMBER OF COMMERCE IN LUXEMBOURG A.S.B.L.

## **The American Chamber of Commerce in Luxembourg**, (AMCHAM.lu), is Luxem-

bourg's largest private Chamber of Commerce. We hold the US Chamber of Commerce's franchise to be their affiliate in Luxembourg (think of us as being like a McDonald's hamburger restaurant franchise!). We are an active member of the Federation of American Chambers of Commerce in Europe (which gives us a pan European network of partner organizations). At the same time, we are a local Luxembourg non-profit organization led by a local board of Directors chosen from among our Luxembourg Charter members.

### **We exist to provide the following four services:**

1. Networking in English
2. Information about how Luxembourg works
3. Problem-solving (when our members see a need for improvements in local practices and policies)
4. Communication and advocacy with government decision-makers to ensure the needs of our members are given appropriate consideration.



We provide these services through 17 committees, digital webinars, a weekly digital newsletter, Social media, our [www.amcham.lu](http://www.amcham.lu) website, our comprehensive **Doing Business in Luxembourg** book (now in its 4th edition), monthly ABAL lunches, evening cocktail seminars, large social events (like Thanksgiving and Christmas dinners, Summer BBQ, Carnival party, New Year's Reception...), and most recently, Saturday Newcomer orientation courses. Communication is critical to us, and we couldn't do it without the help of great partners like the Luxembourg Times.

Our membership includes a significant number of Luxembourg's most successful and respected companies. We are very proud to be a multi-national melting pot organization with 30% companies of US origin, 20% companies of Luxembourg Heritage and with the remaining 50% being companies from all over the world. We accept and welcome members with all passports and are fully committed to treating all members equally and always providing the highest quality services and support. Please contact **[info@amcham.lu](mailto:info@amcham.lu)** to discuss joining our family of great members!



## A CHECK-LIST **FOR ARRIVALS**



## **ESSENTIALS**



## NEWCOMER'S GUIDE

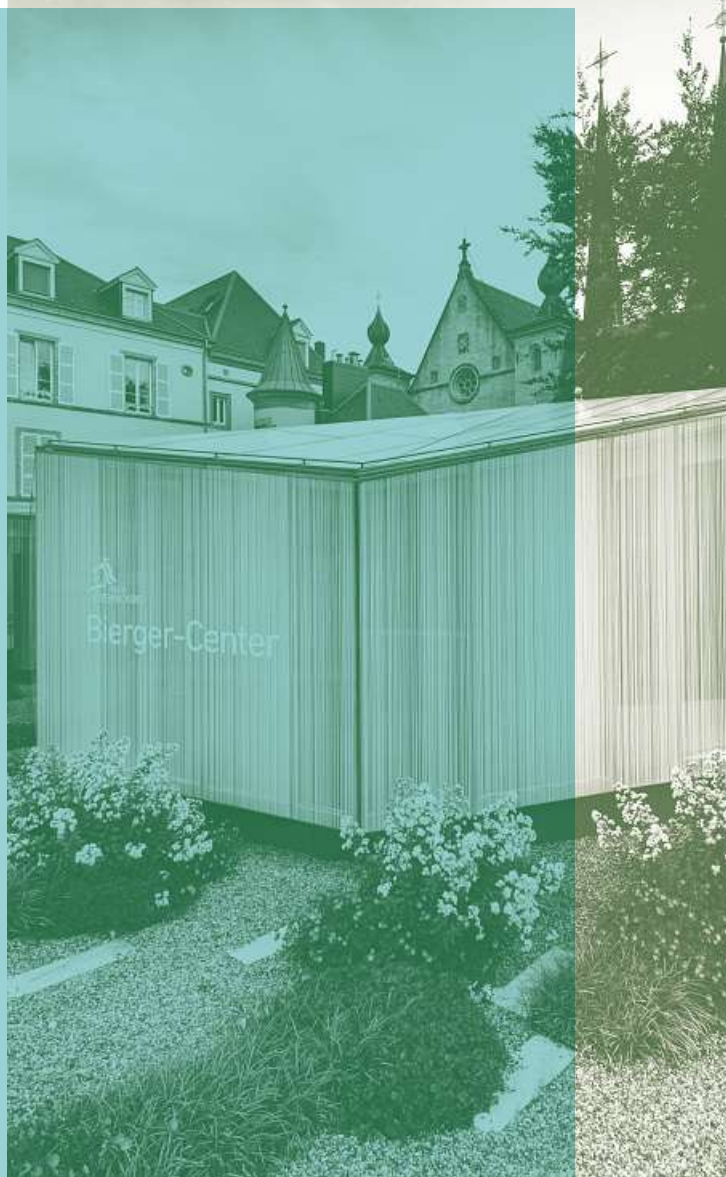
Our newcomer's guide is designed to give you a toolkit of essential information to help your first few months go smoothly.

We'll take you step-by-step through everything you need to do when you arrive, including registering your residency and driving licence. We even cover how you apply for a visa and work permit before you set off. Other essential information includes opening a bank account, and an overview of the public transport system, which is free in Luxembourg.

Moving can be daunting, but our guide will help you set up home with information on finding accommodation, setting up utilities, and getting a mobile, in an easy-to-digest, bite-size format.

There is also a section on meeting people, although we recommend you look at the *Leisure* section of this magazine for inspiration on nightlife, restaurants, theatre, walking trails, museums, and galleries, joining a gym or yoga class, and day trips inside Luxembourg or in the Greater Region.

Each page has useful website and contact details where you can find more information or download relevant forms, and a QR code to a longer article in the *Luxembourg Times* where you will find more details.



## WHAT TO DO IN AN EMERGENCY

We hope you won't need to call emergency services, but in case you do, our newcomer's guide gives you details on when to dial 112. We also take you through how to register with a doctor or dentist.



Le Palais Grand-Ducal À Luxembourg-Ville ©SIP Uli Fielitz, tous droits réservés,  
Vdl Arbre Printemps ©LMIH/Sabino Parente, Montgolfière ©LMIH/Focalize,  
Air Rescue ©Air Rescue, Berger Center Luxembourg ©LFT Thomas Linkel

# REGISTERING YOUR RESIDENCY



## WHO?

- EU/EEA passport holders who plan to stay more than 90 days have 8 days to register.
- Third country nationals must register in 3 working days.

## WHERE?

Bierger Center in Luxembourg City or at your local municipal office.

## WHAT YOU NEED

- Valid ID or passport.
- Proof of residence (rental contract or hotel accommodation form).

## THIRD COUNTRY NATIONALS ALSO NEED

Authorisation to stay, a visa or residence permit from a Schengen Area country.

All documents must be in English, German, or French or translated by a sworn translator.

## WHAT HAPPENS NEXT?

You will receive a declaration of arrival containing a 13-digit personal ID number or *matricule*.



Knuedler Luxembourg City ©LFT Thomas Linkel

## IMMIGRATION DIRECTORATE – DEPARTMENT FOR FOREIGNERS

26 route d'Arlon, L-1140

B.P. 752, L-2017, Luxembourg

☎ (+352) 247 84040

9.<sup>00</sup> to 12.<sup>00</sup> and 14.<sup>00</sup> to 16.<sup>00</sup>

🌐 <https://guichet.public.lu/en/citoyens/immigration.html>

🌐 <https://www.traducteurs-interpretes.lu/en/>

## LEGITIMATION CARD OR CARTE DE LÉGITIMATION

**WHO?** EU institution employees and family members

**HOW?** Via your HR department

## APPLYING FOR A RESIDENCE PERMIT OR CARTE DE SÉJOUR

**WHEN?** Within 3 months of arrival.

**HOW?** Submit a form to the Immigration Directorate together with a copy of your ID. Other documents will depend on whether you are employed, self-employed, a student, or a family member of an EU citizen.

## THIRD COUNTRY NATIONALS MUST ALSO SUBMIT

- A medical certificate following an examination.
- Declaration of Arrival.
- Authorisation to stay.
- Visa.



# BARRELS AND CUBES

for collecting batteries and accumulators



Our **battery cubes** are free of charge and on request available at all **resource centres** and at the **SDK Mobile Collection**.

# WORK PERMIT, VISA AND AUTHORISATION TO STAY



EU citizens can live and work in Luxembourg without a visa, whilst third country nationals must apply for a work permit, an authorisation to stay, and possibly a visa.

## EU 27 CITIZENS

You will need proof of employment, self-employment, or registration at an educational institution, or that you have the financial means to support yourself. This includes any family members with you such as your spouse, partner, children, or parents.

## THIRD COUNTRY NATIONALS

### WORK PERMIT

Your employer will need to show that your job was available via Luxembourg's employment agency ADEM for three weeks and could not be filled by an EU applicant. They are then allowed to hire a third country national.

You, or your employer must submit your work permit application, signed, dated, and stating a start date.

Your application should also include:

- A copy of all the pages of your passport.
- A CV.
- A copy of your professional qualifications.
- A copy of your employment contract.
- The original certificate from ADEM granting your employer the right to hire a third country national.

All documents must be in English, German, or French or translated by a sworn translator.

It can take up to 3 months to receive a permit, and your employer must keep a copy of it. They should also notify the Ministry of Foreign and European Affairs at least three working days before you are due to start your job.

### AUTHORISATION TO STAY

All third country nationals must apply for a temporary authorisation to stay, lasting 90 days. Documents should be submitted directly to the Immigration Directorate or the Luxembourgish embassy or consular in your home country.

Your application should include:

- A copy of all the pages of your passport.
- An extract of your criminal records in your country of residence.
- A CV.
- A copy of your professional qualifications.
- A copy of your employment contract signed and dated by both parties.
- The original certificate from ADEM granting your employer the right to hire a third country national.

The process can take 2-3 months. When you arrive, you can apply for a visa or if, for example, you are married to an EU national, you must register your residency and arrival at your local municipality or the Bierger Center.

### TYPE D VISA

To apply you will need to fill out the visa application form and include 2 recent identical ID photos, and submit it with your temporary authorisation to stay and your passport. You will get a stamp or vignette which will be valid for a period of 90 days to one year. Visa applications take 1-4 weeks.



© Marc Wilwert



# Welcome to Luxembourg

Need assistance at work? Problems with social security? Difficulty filling out your tax return?

**The OGBL, the largest trade union in Luxembourg, is there to listen and support you. Contact us:**

**T. +352 2 6543 777 | [contact.ogbl.lu](mailto:contact.ogbl.lu)**

Become a member: [hello.ogbl.lu](mailto:hello.ogbl.lu) — [ogbl.lu](http://ogbl.lu) — [f ogbl](#) — [t ogbl\\_luxembourg](#)

**OGB•L**  
— THE TRADE UNION

# OPENING A BANK ACCOUNT



Access to your money, debit and credit cards, will be a priority when you arrive in Luxembourg.

## WHAT DO I NEED TO OPEN AN ACCOUNT?

- A valid ID such as a passport or EU driving licence.
- Proof of address such as a housing contract or residency certificate (which your local municipality can issue). You can provide proof of address for a neighbouring country.
- A copy of your employment contract or letter of employment.



## PACKAGES AND CHARGES

Banks offer different levels of support which can include statements, access, transactions, online and e-banking, credit cards, and access to loans, insurance, investment and securities accounts.

### CHECK:

- Banking fees.
- Credit and debit card limits.
- Limit to the number of transactions you can make per month.
- Charges for using other banks' ATMs.

## WHAT YOU GET

- Access to the Visa debit system used across Europe for cash withdrawal and payment (including contactless) in shops and restaurants.
- You can apply for a credit card – Visa or Mastercard.
- Online banking and mobile apps.
- A LuxTrust token (some banks) which you can also use on the government portal Guichet.lu.

## RETAIL BANKS

### SPUERKEESS/BCEE (STATE BANK)

📱 [www.bcee.lu](http://www.bcee.lu)

### BANQUE INTERNATIONALE À LUXEMBOURG

📱 [www.bil.lu](http://www.bil.lu)

### BGL BNP PARIBAS

📱 [www.bgl.lu](http://www.bgl.lu)

### POST LUXEMBOURG

📱 [www.post.lu](http://www.post.lu)

### ING

📱 [www.ing.lu](http://www.ing.lu)

### RAIFFEISEN

📱 [www.raiffeisen.lu](http://www.raiffeisen.lu)

## ONLINE BANKS (FOR MORE THAN ONE CURRENCY)

### REVOLUT

📱 [www.revolut.com](http://www.revolut.com)

### MONESE

📱 [www.monese.com](http://www.monese.com)

### BUNQ

📱 [www.bunq.com](http://www.bunq.com)

## THE LUXEMBOURG BANKER'S ASSOCIATION

📱 [www.abbl.lu](http://www.abbl.lu)

📷 BCEE ©LMIH/Focalize



YOUR  
BRIDGE  
TO LIFE

[SPUERKEESS.LU/housing](https://SPUERKEESS.LU/housing)

# Let's talk housing!



# FINDING A TEMPORARY HOME

Do you need temporary accommodation for a few weeks or months when you first arrive?



## ON A SHOESTRING

If you are only staying a few nights, the city's youth hostel has a bed (including bedsheets) with ensuite bathroom for €37 without membership. If you want to stay somewhere for free, try couchsurfing.com for a night on someone's sofa.

📄 <https://youthhostels.lu/en>

📄 [www.couchsurfing.com](http://www.couchsurfing.com)

## ALL THE COMFORTS OF HOME

Airbnb, or apartments and rooms offered bed and breakfast style are ideal for a short stay of a few days or weeks. You can find them for as little as €55 a night for a room and €150 for a two-bedroom apartment.

📄 [www.airbnb.com](http://www.airbnb.com)

📄 [www.bedandbreakfast.eu](http://www.bedandbreakfast.eu)

## INDEPENDENCE

Aparthotels are ideal if you want to rent for a few months, and need some kitchen facilities. Most come with basic furniture, a TV and internet, and have cleaning services. City locations include designer apartments at The Central and duplexes at Empire Hotel. For Kirchberg, and the EU and financial institutions, try Smart Aparthotel, you'll get villas at The Queen, serviced apartments at MG Hotels, and designer furniture and artwork at Cab Ap'art.

📄 [www.thecentral.lu](http://www.thecentral.lu)

📄 [www.thequeen.lu](http://www.thequeen.lu)

📄 [www.vistay.lu](http://www.vistay.lu)

📄 [www.empire.lu](http://www.empire.lu)

📄 [www.mghotels.lu](http://www.mghotels.lu)

📄 [www.cabaparts.eu](http://www.cabaparts.eu)

## SHORT-TERM LETS

If you need accommodation for a few months, then short-term lets and furnished rooms start from €800 a month. Furnished.lu and Vauban & Fort offer furnished rooms from 15 days to one year, with an all-inclusive rent that covers the cost of utilities, internet, and insurance. Most give you access to a kitchen, laundry facilities, and rooms have an LCD TV.

Online estate agents AtHome and FMI list furnished apartments, whilst Luxfriends and Appartager have house and flat shares.

📄 [www.furnished.lu](http://www.furnished.lu)

📄 [www.vaubanfort.lu](http://www.vaubanfort.lu)

📄 [www.luxembourgexpats.lu/  
real-estate](http://www.luxembourgexpats.lu/real-estate)

📄 [www.athome.lu](http://www.athome.lu)

📄 [www.fmi.lu](http://www.fmi.lu)

📄 [www.appartager.lu](http://www.appartager.lu)

📄 [www.luxfriends.eu](http://www.luxfriends.eu)

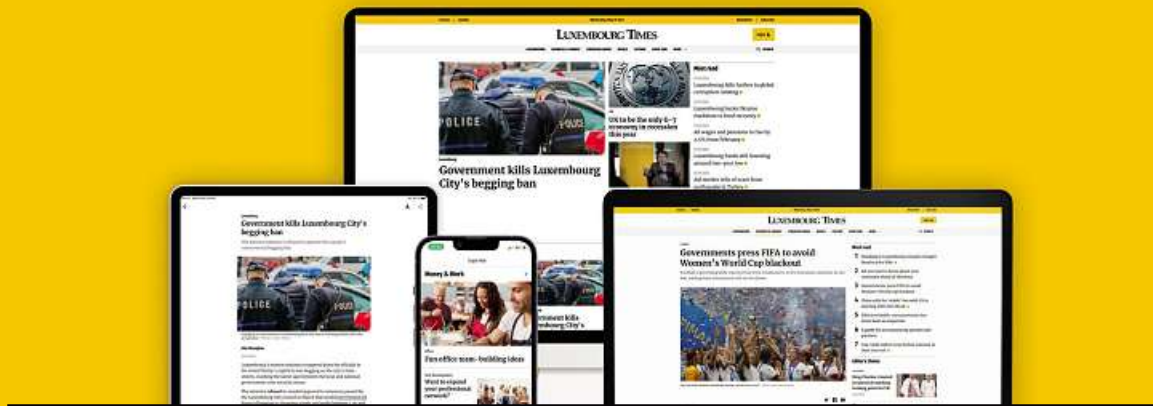


📄 [unsplash.com](https://unsplash.com)



# LUXEMBOURG TIMES

We question. We cover. We connect



## Luxembourg's leading online newspaper in English

Download the app

[LuxTimes.lu](https://luxtimes.lu)



# CONNECT YOUR UTILITIES



If you're moving to a long-term rental or have bought a home, you'll need to get your utilities connected and organise waste disposal.

## EASY OPTION

If tenants are moving out, you can ask them or the landlord to switch the utilities into your name. You just need to provide meter readings on moving day.

## GAS & ELECTRICITY

Enovos is the main supplier for gas and electricity but there are also regional suppliers. Use the Calculix price comparison calculator to review your best options. Standard electrical sockets are 220 volts AC and use the European two-pin plug.

- 📱 [www.enovos.lu](http://www.enovos.lu)
- 📱 [www.electris.lu](http://www.electris.lu)
- 📱 [www.leoenergy.lu](http://www.leoenergy.lu)
- 📱 [www.sudenergie.lu](http://www.sudenergie.lu)
- 📱 [www.nordenergie.lu](http://www.nordenergie.lu)
- 📱 [www.steinergergy.lu](http://www.steinergergy.lu)
- 📱 [www.sudstrom.lu](http://www.sudstrom.lu)
- 📱 [www.calculix.lu](http://www.calculix.lu)

## MAZOUT OIL

In rural areas mazout oil is used for heating. There are several suppliers so search for a local one. Check the level of your tank regularly, and fill it when it is close to empty as the price per litre decreases the more litres you order in one go. Don't let it run dry as this will damage the heating system.

## WATER

Water is supplied by your municipality via the *Services des Eaux*. You will be charged on a quarterly basis together with your waste disposal. If you live in the city, you can register a new connection, via the *Ville de Luxembourg (VdL)*.

## WASTE DISPOSAL

You can order bins from your local municipality or the VdL. The black bin is for general waste, the blue bin for paper, whilst the yellow bin (or green bin in the city) is for glass. Green bins not used for glass, can be used for organic and garden waste including grass cuttings.

Costs are billed quarterly and will depend on the frequency your bin is emptied and the weight of its contents.

Valorlux collect recyclable waste such as plastic bottles, yoghurt pots, cat food trays, jar lids and cans in blue or green recycling bags. You can order these for free from their website or collect a roll of bags from your municipality.

The timetable for all bin and bag collections is provided by your local municipality or the VdL.

- 📱 <https://www.valorlux.lu/en>

## RECYCLING

In addition to kerbside recycling, there are centres located across Luxembourg where you can dispose of bigger items and electrical goods and paint tins. Kerbside pick up can be organised for big items such as beds or sofas. Supermarkets and petrol stations also have recycling facilities, including ones for textile waste.

- 📱 [www.ecotrel.lu/en/citizen](http://www.ecotrel.lu/en/citizen)

## INTERNET

There are numerous providers although Post Luxembourg is the national carrier. Most offer monthly packages and some bundles of TV, landline, mobile and internet. Choose carefully, as disconnecting and reconnecting a change of supplier can be costly.

- 📱 [www.post.lu](http://www.post.lu)
- 📱 [www.orange.lu](http://www.orange.lu)
- 📱 [www.tango.lu](http://www.tango.lu)
- 📱 [www.internet.lu](http://www.internet.lu)
- 📱 [www.vo.lu](http://www.vo.lu)
- 📱 [www.eltrona.lu](http://www.eltrona.lu)
- 📱 [www.sudstrom.lu](http://www.sudstrom.lu)
- 📱 [www.telewalfer.lu](http://www.telewalfer.lu)

## COMPARISON WEBSITES

- 📱 <https://www.letzcompare.lu/>
- 📱 <https://switchr.lu/en/>

Just arrived in Luxembourg?  
Everything is ready for you.

binsteid

**My First Energy**, the 100% online gas and electricity subscription

Save time on your arrival in the country by taking out a gas and electricity contract directly online and move in with an easy mind.

Log in now on [myfirstenergy.enovos.lu](https://myfirstenergy.enovos.lu)

Energy for today. Caring for tomorrow.



# GETTING A MOBILE

Will your mobile operate in Luxembourg and how can you get a local number?



Luxembourg has 4G, 4G+ and 5G connectivity, and free Wi-Fi is available in the city via [www.citywifi.lu](http://www.citywifi.lu).

Mobile numbers have nine digits starting with six, so Post is 621, Tango is 691 and so on. If you're using a phone from another country, don't forget to affix +352, the country code, when you are dialling a local number.

## WILL MY MOBILE WORK?

**EU** – free network roaming subject to contract.

**Outside EU** – connection but higher charges.



[www.post.lu](http://www.post.lu)  
8002 8004  
(+352) 2424 8004



[www.tango.lu](http://www.tango.lu)  
800 777 77  
(+352) 691 700 777



[www.orange.lu](http://www.orange.lu)  
800 61 606  
(+352) 661 061 606



[www.eltrona.lu](http://www.eltrona.lu)  
(+352) 499 466 888



[www.internet.lu](http://www.internet.lu) (LOL)  
2799 0000

## GETTING A PRE-PAID SIM

You need to be registered as a resident to get a mobile contract, but not if you buy a pre-paid SIM card. You can use this if you already have a phone but want a local number. You can buy them online, at shops, and the airport, but you must show a form of ID. Once activated, you can top up online, at Kiosk shops, supermarkets or via your phone.

## GETTING A SIM/PHONE PACKAGE

### WHAT YOU NEED

- Proof of residence.
- Luxembourg bank account IBAN.
- Valid ID.

Mobile operators offer monthly SIM plans including basic packages for as little as €3 per month for a set number of calls, texts, and data. You can include a smartphone, and a signed contract usually lasts 12-24 months.

Most operators charge a monthly standard rate which you pay by direct debit. You can compare mobile and internet packages on

[www.letzcompare.lu](http://www.letzcompare.lu).

unsplash.com

A couple is lying on their backs on a light-colored floor in a room that is in the process of being painted. The wall behind them has large sections of yellow and dark blue paint. A ladder is leaning against the wall on the right. To the left, there are several cardboard boxes stacked. The couple is holding a color palette together. There are other color palettes and paint cans on the floor.

# Your one-stop shop in Luxembourg



Mobile • Internet • TV • Banking  
• Postal services & more...

**post.lu**



# WHAT TO DO IN AN EMERGENCY

Ambulance, medical emergency, fire, car accident, gas leak, or sick pet – when should you call 112?

## WHEN SHOULD YOU CALL 112?

- Accident at home, work or on the road if someone is injured.
- Medical emergency, including poisoning.
- Fire or flood.
- Following an attack (human or animal) in which you or someone else is wounded.
- Pollution.



If you are in a road accident and no one is injured call the police on 113

## HOW DOES IT WORK?

You can call 112 for free 24 hours a day 7 days a week. Most operators speak English but speak clearly as they will not be native speakers.


## TELL THE OPERATOR:

- Where the incident is, so be precise on location for help to come quickly.
- Your name.
- Details about what has happened, answering specific questions for appropriate help to be sent, such as the number of people involved, and the nature of the emergency.
- Stay on the phone and follow instructions carefully until the operator hangs up.
- Stay with a victim and apply first aid if possible.

you provide on the call. The SAMU may come by car or helicopter depending on how fast the operator thinks help needs to arrive.

## ONLINE EMERGENCY SUPPORT

The emergency services receive in excess of 200 calls a day, so only call if it is an emergency. You can visit this website

 <https://112.public.lu/fr/urgences/numerosutiles-et-gardes.html> for:

- Duty hospitals.
- On-call medical centres.
- On-call dentists.
- Paediatric consultations outside doctor's office hours.
- Duty pharmacies.
- On-call ophthalmologists.
- Duty vets.

## AMBULANCE SERVICES

The 112 operators will decide if you need the SAMU (*Service d'Aide Médicale Urgente*) and send a medic and nurse additionally depending on the symptoms and information



 © unsplash.com

---

## ACCIDENT AND EMERGENCY HOSPITALS

Check online for duty hospitals at [www.112.lu](http://www.112.lu). Children under 14 years should go to the Kan-nerkliniek emergency department at the Central Hospital. The Bohler Clinic also takes emergencies by appointment. The Maternity Hospital Grande Duchesse Charlotte and Bohler Clinic also deal with gynaecological and obstetrical emergencies.

---

## EMERGENCY MEDICAL CENTRES (FOR DOCTORS)

Open weekdays 20.<sup>00</sup> to midnight, and at weekends from 8.<sup>00</sup> to midnight. You do not need an appointment. After midnight, call [☎ 112](tel:112).

---

### CITY

[!\[\]\(13a9156b5701358ad5df1ac9471f3466\_img.jpg\) 23 Val Fleuri](#)  
[!\[\]\(37359000886325586e5bb62a98362441\_img.jpg\) 2033 3111](#)

---

### BELVAL

[!\[\]\(aa2545022aef75b49485a583e359a0ff\_img.jpg\) 3-4 Avenue du Swing](#)  
[!\[\]\(7a27b5eeeac46afc25edbe5efc49d846\_img.jpg\) 2033 3111](#)

---

### ETTELBRUCK

[!\[\]\(92604bff2a286d454d073adc13337191\_img.jpg\) 110 Avenue Lucien Salenty](#)  
[!\[\]\(eab1bb6c691b4b4bf6c6d6ee11dc9969\_img.jpg\) 2033 3111](#)

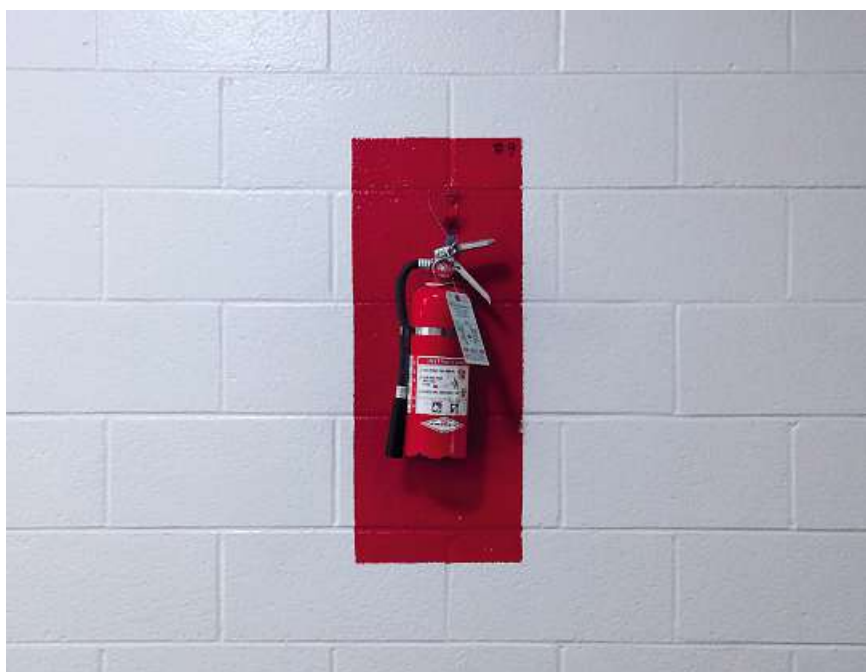
---

## EMERGENCY DENTISTS

---

### DENTAL CENTRE BONNEVOIE

[www.centremedicodent-aiireluxembourg.lu](http://www.centremedicodent-aiireluxembourg.lu)



---

### DENTAL CENTRE BERTRANGE

[www.centremedicodentaire-bertrange.lu](http://www.centremedicodentaire-bertrange.lu)

---

### DENTAL CENTRE STRASSEN & ESCH-SUR-ALZETTE

[www.hygie-dentaire.lu](http://www.hygie-dentaire.lu)

---

## EMERGENCY VETS

---

### SOS VET

[www.sosvet.lu](http://www.sosvet.lu)  
[☎ 27 510 112](tel:27510112)

---

### DUTY VETS

[www.lak.lu](http://www.lak.lu)

---

## POLICE DIAL 113

For thefts, burglaries, assaults, car accidents or to report suspicious behaviour.

---

## GAS, ELECTRICITY AND WATER

If you smell gas, have a prolonged electricity power outage, or have a problem like a burst pipe.

**GAS** [☎ 8007 3001](tel:80073001)

**ELECTRICITY** [☎ 8002 9900](tel:80029900)

**WATER** [☎ 112](tel:112) and switch off the stopcock.

---

## GOUVALERT APP

This app broadcasts alerts and major incidents that occur on a national scale such as serious accidents or weather conditions, fires, or energy disruption. It can also geolocate you in the event of an accident where you require immediate assistance.

<https://112.public.lu/fr/urgences/numerosutiles-et-gardes/gouvalert.html>



# FINDING A DOCTOR, DENTIST OR SPECIALIST

Here's how to register with a doctor, find a dentist or medical specialist such as physiotherapist or gynaecologist.

## SEARCH FOR THEM

 [www.doctena.lu](http://www.doctena.lu)

Search by location, profession or specialism and by language. Book an appointment online or call for one.

## VISITING A DENTIST

Make sure a dentist is registered with the *Caisse de Maladie* for reimbursement by the CNS.

Major dental work requires pre-approval from the CNS or a private insurer.

## SPECIALISTS

Make sure the specialist is registered with the CNS. Some specialists such as some psychologists are not covered by the CNS.



## REGISTERING WITH A DOCTOR

Bring your 13 digit ID and social security number.

Bring medical records and vaccination cards (for children) if you have them.

Fill out a doctor's form on general state of health, ongoing conditions, and medicine you take.

Doctors are responsible for long-term care of chronic conditions.

Pay after appointment and keep receipt for reimbursement by the *Caisse Nationale de Santé* (CNS).



 ©Adobe Stock



**BECOME  
A MEMBER  
FOR ONLY  
0,20€/DAY**

# **MEDICAL EMERGENCIES ARE UNPREDICTABLE.**

THEY CAN HAPPEN TO ANYONE.  
HELP US SAVE LIVES — ONE DAY IT MIGHT EVEN BE YOURS.



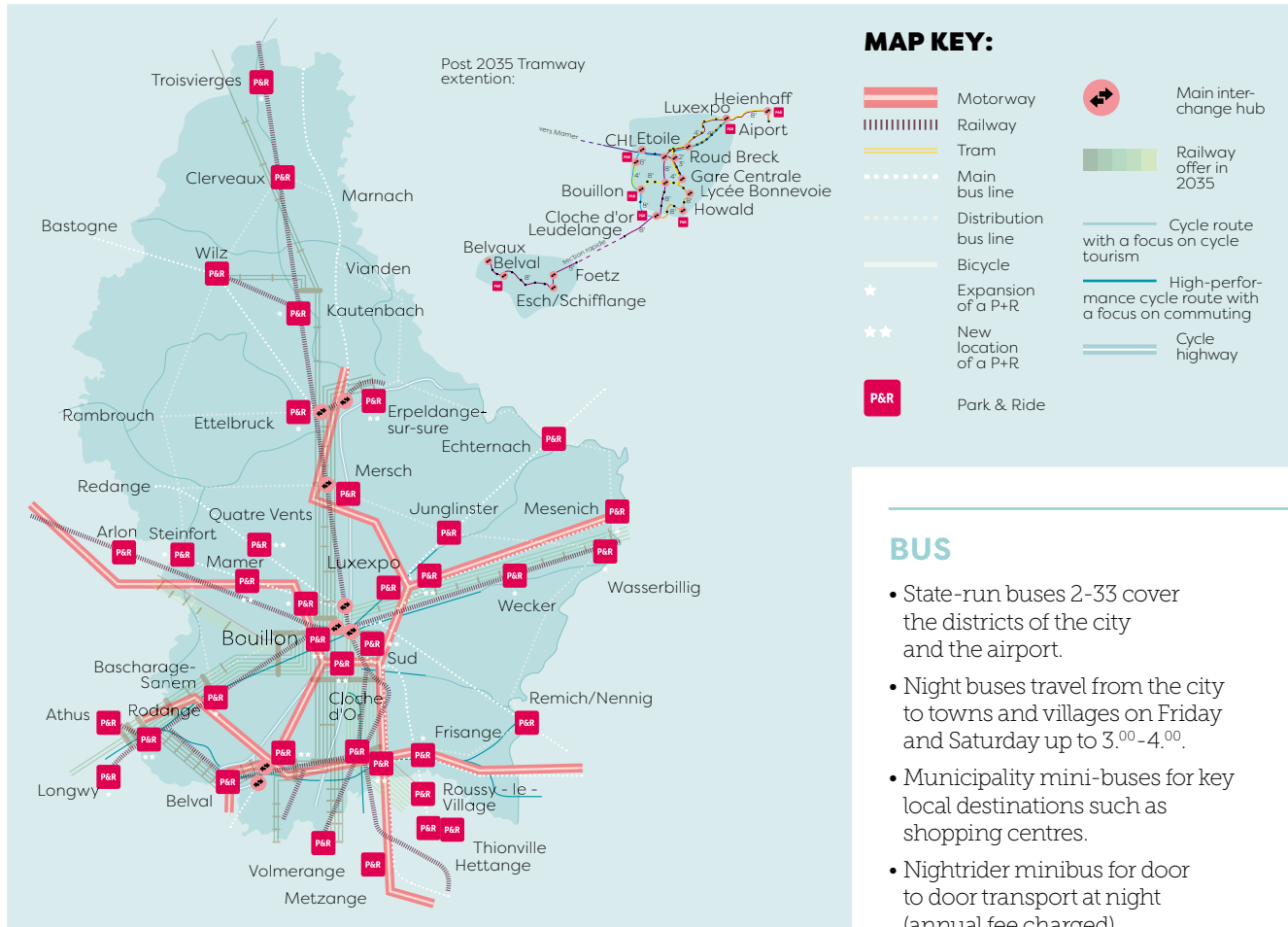
We fly for **your life**

**info@lar.lu**  
**www.lar.lu**  
**(+352) 48 90 06**



# GETTING AROUND

Free transport on the bus, train, and tram, or try the bicycle network.



## BUS

- State-run buses 2-33 cover the districts of the city and the airport.
- Night buses travel from the city to towns and villages on Friday and Saturday up to 3.<sup>00</sup>-4.<sup>00</sup>.
- Municipality mini-buses for key local destinations such as shopping centres.
- Nightrider minibus for door to door transport at night (annual fee charged).

## TRAM

Stations from Central Railway Station to LuxExpo in Kirchberg via the old town with an extension to stations in Bonnevoie. On completion the tram will run from the airport to Cloche d'Or.

## TRAIN

- Services to Arlon (Belgium), Trier (Germany) and Metz (France).
- Travel within Luxembourg is free, but cross border travel requires a ticket.
- Train lines to Dudelange, Esch-sur-Alzette, Kleinbettingen, Pétange, Rumelange, Troisvierges, Wasserbillig and Wiltz.
- Pfaffenthal station linked to the Kirchberg plateau via a funicular.
- Direct trains to Paris, connections to Brussels and Strasbourg.

## BICYCLE

- Vel'oh has more than 100 stations in the city and key towns outside the city (Strassen, Mamer, Leudelange, Bertrange, Niederanven).
- All bikes are equipped with electrical assistance.
- You can pick up and drop off at any cycle stations (subject to spaces).
- Free for the first half hour.
- Annual subscription is €18.

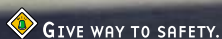
Source of visuals: National Mobility Plan 2035

T H E N E W



17

100% ELECTRIC



GIVE WAY TO SAFETY.

Environmental information (KB 19/03/04): [bmw.be](http://bmw.be)

18,4-19,6 KWH/100 KM • 0 G/KM CO<sub>2</sub> (WLTP)

PURE  
EMOTIONS

**Bilia-Emond Luxembourg**

7, Rue Christophe Plantin  
L-2339 Luxembourg  
[www.bilia-emonnd.bmw.lu](http://www.bilia-emonnd.bmw.lu)

**Muzzolini**

6, Rue Romain Fandel Zi Um Monkeler  
L-4149 Esch-sur-Alzette  
[www.muzzolini.bmw.lu](http://www.muzzolini.bmw.lu)

**Schmitz**

21, Rue de la Gare  
L-7535 Mersch  
[www.schmitz.bmw.lu](http://www.schmitz.bmw.lu)

**Schweig**

6, Hauptstrooß  
L-9806 Hosingen  
[www.schweig.bmw.lu](http://www.schweig.bmw.lu)

# REGISTERING OR EXCHANGING A DRIVING LICENCE

Even if you have come to Luxembourg from an EU/EEA country, you may need to exchange your driving licence. All licences are issued by the *Société Nationale de Circulation Automobile*.

## IF YOU HAVE AN EU/EEA LICENCE

It is optional, but advised to register your licence with the SNCA as it makes it easier to get a duplicate if lost or stolen. Otherwise, you will need a certificate of authenticity from the country that issued your licence stating the validity and vehicle categories.

Registration is free, you just need to fill out a form and attach a copy of both sides of your licence plus a copy of a valid ID. You can post it or take the form in person to the SNCA office at Sandweiler or the Guichet reception in the city, at 11 rue Notre Dame.

If you commit a driving offence resulting in points or the restriction, cancellation, or suspension of your licence you will need to exchange it. To do this you fill out a form and attach a recent photo measuring 45 x 35mm, together with a copy of your ID and both sides of your current licence, and a criminal extract record that is less than three months old which you can order from MyGuichet. The fee to exchange your licence is €30, and you surrender your original licence when you collect the new one.



embourgeois one within a year of residence in the country. You can apply as soon as you arrive, but it will only be converted once you have been resident for 185 days. You can continue to drive using your foreign licence for up to one year.

If you don't convert your licence within a year, you will have to pass a driving test (practical and theory), and your foreign licence will cease to be valid.

To convert it, fill in a form and submit it with a recent photo 45 x 35mm, a medical certificate from your GP, and criminal record extracts from Luxembourg and your home country (which are less than 3 months old).

You will also need to submit a copy of your ID and both sides of your existing licence. The fee is €30 and you surrender your foreign licence when you collect the new one.

## SNCA

🌐 [www.snca.lu](http://www.snca.lu)

☎ (+352) 26 626 400

🕒 7.<sup>30</sup> to 16.<sup>30</sup>

✉ [info@snca.lu](mailto:info@snca.lu)



## ALL OTHER LICENCES

If you come from a country outside the EU/EEA, including the UK, you must convert your license to a Lux-

📷 ©Jared Lisak (unsplash.com)

75 YEARS OF DRIVING DREAMS



Thank you!

**Losch Luxembourg can look back on three quarters of a century of success and continuous growth.** We would like to thank our customers for their loyalty over the years, because customer orientation is of utmost importance to us. We have started the anniversary year with ambitious plans to realise our visions for the future. Our goal is to offer innovative concepts and solutions for the changing world of mobility. Find out more: [losch.lu](https://losch.lu)



Garage Losch Bech-Kleinmacher | Garage M. Losch – Bereldange | Garage Marc Winandy – Bettembourg | Garage M. Losch – Bonnevoie | Garage Roby Cruciani – Dudelange | Garage Kruft – Echternach | Garage Martin Losch – Esch-sur-Alzette | Garage M. Losch – Bentley Luxembourg – Gasperich | Garage M. Losch – Lamborghini Luxembourg – Roost | Garage André Losch – Porsche Zenter Lëtzebuerg – Howald | Garage André Losch – Porsche Zenter Roost | Garage Pepin – Ingeldorf | Garage Losch & Cie – Junglinster | Garage Serge Tewes – Leudelange | Garage Losch Truck, Van & Bus – Niederanven | Garage Castermans – Redange-sur-Attert | Garage Claren & Cie – Roost | Used Cars by Losch – Roost | Garage A. Pauly-Losch – Strassen | Garage Martin Biver – Weidingen

# MEETING PEOPLE

Forums, clubs, language classes, or shared interest groups, give you the opportunity to meet people and make new friends.



## LUXEMBOURG MEETUP

Find people who share your passions, from hiking and running groups, to expats who organise trips in the region or regular restaurant meetups to practise languages. This online forum is a good starting place to find people with common interests, and is free to join.

📱 [www.meetup.com](http://www.meetup.com)

## INTERNATIONS

A dedicated and free resource to support expats, InterNations has a social forum with groups and events that you can join.

📱 [www.internations.org/luxembourg-expats](http://www.internations.org/luxembourg-expats)

## EVENTBRITE

This website brings together events for professional networking, social events, debates or presentations on everything from sport and health, to family.

📱 [www.eventbrite.com](http://www.eventbrite.com)

## COUNTRY ASSOCIATIONS

Membership to the BLC or AWCL gives you access to talks, classes, regular coffee mornings, lan-

guage classes, and playgroups. Many hold events including book sales, bazaars, or to mark an important date in their home country calendar.

### BRITISH LADIES CLUB

📱 [www.blc.lu](http://www.blc.lu)

### AMERICAN WOMEN'S CLUB LUXEMBOURG

📱 [www.awcluxembourg.com](http://www.awcluxembourg.com)

### BAZAR INTERNATIONAL (COUNTRY GROUPS)

📱 [www.bazar-international.lu/stands/participating-stands-2022](http://www.bazar-international.lu/stands/participating-stands-2022)

## LGBTIQ+

**CIGALE** – a centre offering advice and support on sexual orientation, coming out and gender identity.

**ROSA LËTZEBOURG** is an association which promotes LGBTIQ+ equality and rights, and manages the Rainbow Center at 19 rue St. Esprit. They organise regular events and meetups together with local groups and organisations such as Pink Ladies and Woof Luxembourg.

Esch-sur-Alzette hosts Luxembourg's Pride Week and street festival in early July. ITGL supports Luxembourg's intersex and transgender community.

📱 [www.cigale.lu](http://www.cigale.lu)  
📱 [www.rosa-letzebuerg.lu](http://www.rosa-letzebuerg.lu)  
📱 [www.rainbowcenter.lu](http://www.rainbowcenter.lu)  
📱 [www.luxembourgpride.lu](http://www.luxembourgpride.lu)  
📱 [www.queer.lu](http://www.queer.lu)  
📱 [www.itgl.lu](http://www.itgl.lu)

## FACEBOOK GROUPS

If you need to ask for advice these groups are great places to do just that, tapping into the wealth of knowledge within the expat community:

LUXEMBOURG EXPATS  
LUXEMBOURG PARENTS  
EVENTS IN LUXEMBOURG

## WELCOME AND INTEGRATION CONTRACT (CAI)

- Orientation day
- Discounts on language courses
- Free citizenship classes

📱 [www.forum-cai.lu](http://www.forum-cai.lu)

LIVE

WORK

FOOD

LEISURE

SHOPPING

CLO  
CHE  
D'OR  
LUXEMBOURG

JUST 15 MIN TO WHATEVER YOU NEED

# CHOOSE NEW URBAN LIVING!

APARTMENTS AVAILABLE

UNDER CONSTRUCTION | DELIVERY END OF 2024

EXCLUSIVE REAL ESTATE AGENTS

**AXENTO**  
IMMO

28 85 021  
WWW.AXENTO.LU

**IMPAKT**  
real estate

28 55 501  
WWW.IMPAKT.LU

VISITE 3D



SET PRICES

# LIVING IN LUXEMBOURG

If you are planning to rent or buy a property, this section looks at popular city neighbourhoods, with key information on prices, transport, and amenities such as shops and restaurants. It also includes a quick reference guide to the process for renting.

Luxembourg's healthcare system ranks 12<sup>th</sup> in the world (*Legatum Prosperity Index 2023*), so if you need ongoing specialist treatment, or plan to have a baby, you are in safe hands. Our guide to hospitals and the National Health Fund (*CNS*) will explain the healthcare and social security system.

Spouses and partners can check our quick guides with advice on finding a job or starting a business. You can also find information on getting a car and compulsory insurance requirements in the Grand Duchy.

Foreign residents aged 18 years or more can now vote in local elections, and we take you through how to do this.



“

**Mir wëlle bleiwe  
wat mir sinn.**

**We will remain  
what we are.**

Luxembourg's official motto

”





## GET TO KNOW **OUR TRADITIONS**

One way to meet Luxembourgers and learn more about the country is to get involved in local traditions, from *Buergebrennen*, or bonfire night, to the country's famous fairground festival, *Schueberfouer*.



# CITY NEIGHBOURHOODS

A quick guide to the most popular residential neighbourhoods in Luxembourg City.

## VILLE HAUTE & GARE

Walk to work, soak up the nightlife or hop on a train to Paris, Brussels, Trier, or Metz.

### GARE

Population: 11,895

Property prices:

€10-14,500 per sqm

Bus lines: 2, 4, 7,  
9, 10, 13, 14, 18, -20,  
22, 23, 27-29

Tram stops: Gare  
Centrale, Place de  
Paris, Place de Metz

### VILLE HAUTE

Population: 3,544

Property prices:

€10-14,500 per sqm

Bus lines: 2-4, 6,  
8-11, 14-16, 18, 19,  
21, 22, 31, 32

Tram stops:  
Hamilius

**WHERE?** Separated by the Pétrusse valley, Ville Haute comprises the streets around Place d'Armes and Place Guillaume II, and the Saint Esprit Plateau, whilst Gare is the area from the central train station to the Bourbon Plateau.

### FOOD

- Supermarkets at Hamilius and the central train station.
- Russian, East Asian, Indian, and Middle Eastern grocery shops.
- Biggest concentration of budget and Michelin starred restaurants.

### CULTURE

- Théâtre des Capucins.
- City Library.
- Villa Vauban and Casino Luxembourg galleries.
- Museum of History & Art, and City Museum.
- Cultural Centre Altrimenti.
- Live music venues Den Atelier and De Gudde Wëllen.

### GREEN SPACES

- Edmond Klein Park and pirate ship playground
- Pétrusse valley and skatepark
- Pescatore Park and fountains
- Kinnekswiss hosts fairgrounds and outdoor concerts



## CENTS & HAMM

Residential neighbourhoods well-located for the business district and the airport.

### CENTS

Population: 6,449

Property prices:

€9,500-14,250 persqm

Bus lines: 7, 9, 14,  
25, 29, CN1

### HAMM

Population: 1,566

Property prices:

€8,500-11,500 persqm

Bus lines: 9, 15,  
25, CN3

**WHERE?** Located in the eastern corner of the city, these neighbourhoods are close to the airport but a stone's throw from the nightlife of Clausen.



## BELAIR

A classy and expensive neighbourhood, filled with grand villas from the 1920s, many now divided into apartments.

Population: 12,613

Property prices: €12,500-15,250 per sqm

Bus lines: 12, 13

**WHERE?** In the west of the city bordered by the two main roads into the city – Route d'Arlon and Route de Longwy.

### FOOD

- Supermarkets in both neighbourhoods.
- Patisserie-coffee shops Namur and Fischer.
- Irish country pub The Black Stuff and njÖrd Kitchen serving Smørrebrød.

### CULTURE

- Luxembourg American Cemetery, the final resting place of 5,000 servicemen including General Patton.
- The Godchaux circuit taking in Luxembourg's textile history.

### GREEN SPACES

- Cents park has an airport-themed playground with a wooden Luxair aeroplane, slide and sandpit.
- Woodside walks by the River Alzette.



### FOOD

- Supermarket Alima, and bio butchers and deli, Niessen.
- La Rioja sells Spanish wines, charcuterie, and cheese.
- Artisan ice cream parlours Bonemaria and NICE.
- Japanese craft ramen shop and restaurant Manzoku, or ceviche at Pablito.

### CULTURE

- National Theatre of Luxembourg.
- Subtile showroom and gallery.
- Fantasybox for Marvel and manga comics.

### GREEN SPACES

- The beautiful Merl-Belair park with a huge playground, lake, rose gardens and a special dog park.
- A cute castle-themed playground at rue Charlemagne.

## GRUND & CLAUSEN

Dating to the 14<sup>th</sup> century, the city's oldest and small neighbourhoods are buzzing at night.

### CLAUSEN

Population: 1,060

Property prices:

€11-12,000 per sqm

Bus lines: 9, 23, CN1

### GRUND

Population: 1,030

Property prices:

€10,500 per sqm

Bus lines: 23

**WHERE?** Both are in picturesque settings on the River Alzette, with Grund just below the Saint Esprit Plateau and Clausen below the Altmünster Plateau.



### FOOD

- Rives de Clausen is a pedestrianised area filled with bars and restaurants.
- Grund is home to Scott's Pub, Oscar's Bar and the Michelin-starred Mosconi restaurant.

### CULTURE

- Natural History Museum in Grund hosts the Science Festival.
- Neimënster cultural centre in Grund has a theatre, art galleries and hosts music festivals.
- The former Vauban fortifications in Grund and vestiges of a 16<sup>th</sup> century chateau in Clausen.

### GREEN SPACES

- A green lung following the river connects the two quarters.
- A panoramic glass elevator links Clausen to Pescatore Park.

## LIMPERTSBERG

The former rose-growing district remains a leafy suburb with art deco houses.



Population: 11,363

Property prices: €13-16,600 per sqm

Bus lines: 2, 4, 8, 19, 30, CN1, CN7

Tram stops: Faïencerie, Theater

**WHERE?** In the northwest of the city, bordered by the Glacis car park, the Alzette River, and the forests of Bambësch.

### FOOD

- Cactus and Monoprix grocery stores, and organic wholefood at Alavita.
- Monthly market at Glacis selling fresh fruit and vegetables.
- Plenty of coffee places including Ready?!
- Syrian social restaurant Chiche! and Spanish tapas at La Réserve.

### CULTURE

- Tramsschapp cultural centre hosts art exhibitions, sport events and theatre.
- Grand Théâtre of Luxembourg for international performances.
- Ciné Utopia arthouse cinema.
- Glacis is home to the Schueberfouer fair at the end of summer and Adventscircus in winter.

### GREEN SPACES

- Sculptures, rose gardens, and a playground in Tony Neuman Park.
- Borders with the playground and forests of Bambësch.

# eltrona.lu

**Your Internet,**

**TV and mobile partner**

for full support during  
your life changes



Stay connected  
with eltrona.lu



## KIRCHBERG

The business district home to the EU institutions and award-winning architecture.

**Population:** 8,746

**Property prices:** €12-14,000 per sqm

**Bus lines:** 6, 7, 12, 16, 18, 21, 25, 26, 30, 32

**Tram stops:** Philharmonie/Mudam, Parlement Européen, Coque, Université, Bibliothèque Nationale, Alphonse Weicker, LuxExpo

**WHERE?** In the northeast of the city on a plateau that at its southern tip is connected by the Grande-Duchesse Charlotte bridge to Ville Haute and overlooks the Pfaffenthal valley from where you can take the funicular to the Pfaffenthal-Kirchberg railway station.



### FOOD

- Auchan Life store and supermarket.
- Tens of restaurants, many with terraces, to suit all budgets.

### CULTURE

- Luxembourg Philharmonic.
- MUDAM contemporary art gallery.
- LuxExpo – home to exhibitions, shows, concerts and festivals.
- National Library of Luxembourg.

### GREEN SPACES

- Botanical garden and arboretum
- Central park with a playground, sculptures, and ornamental lake.
- D'Coque leisure centre with swimming pools and climbing walls.

## BONNEVOIE

The soho of the city, bohemian and a melting pot of nationalities.

**Population:** 18,250

**Property prices:** €10,500-12,000 per sqm

**Bus lines:** 2, 3, 5, 9, 23, 28, 29, CN2, CN3

**Tram stops:** Dernier Sol, Lycée Bouneweg

**WHERE?** Southeast of the city bordering the railway track from Gare, and bordering the historical Polfermillen area.



### FOOD

- Portuguese, Greek, Italian, South American and Indian speciality food shops.
- Two grocery stores, the organic food shop Alavita, and a halal butcher.
- Annual street food festival at Rotondes.
- Sunday brunch at Bouneweger Stuff, French cuisine at Le Laboratoire, and spicy food at the Bay of Bengal.

### CULTURE

- Former rail engine workshop, Rotondes now hosts concerts, theatre, exhibitions, and record fairs.
- Cavern music school and Trois C-L contemporary dance centre.
- Casemates Theatre and Open Theatre Luxembourg.
- Chinese cultural association runs language and calligraphy classes.

### GREEN SPACES

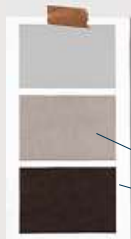
- Space-ship themed playground at Kaltries Park, which has a giant chessboard and table tennis.
- Take the Godchaux walking circuit through the forest to discover the textile history.



*curtains + sun  
protection*



*solar panels*



*Facade:  
plastering  
painting*

*Windows,  
doors + gates*

*carpentry*

*Over  
140 employees  
at hand for  
your projects.*

*gardening  
+ landscaping*



*Your plan.* Our know-how.



Painting | Facade work | Thermal insulation  
Dry walling | Floor covering | Light & stretch  
ceilings | Electrical installations | Carpentry  
Windows, doors & gates | Curtains & sun  
protection | Gardening & landscaping

Showroom:  
7, rue de Godbrange  
L-6118 Junglinster  
T. 42 64 95-1  
[www.phillipps.lu](http://www.phillipps.lu)

# A GUIDE TO RENTING

Our at-a-glance guide to finding the right home and signing a longer-term rental contract.



## WHICH LOCATION?

- The average monthly rental cost in the city for a one-bedroom apartment is **€ 1,600** and for a three-bedroom dwelling it's **€ 4,000**.
- Rush hour can make short journeys considerably longer, so factor in your work or children's school location.
- Will you rely on public or school transport? Check the nearest bus stop, train, or tram station, and if there is a supermarket nearby.



## FINDING A PLACE

- Start searching 2-3 months before you plan to move.
- Register with local estate agents in your preferred location.
- Search online using aggregator sites.
- Check social media groups or noticeboards at work.

## ADDITIONAL COSTS

- Agency fees are usually one month's rent plus VAT.
- The deposit is usually three months' rent.
- Check if the contract includes gas, electricity, and internet (sometimes).
- You will usually have to pay for water and waste collection with your municipality.
- General maintenance such as an annual boiler or heating system service, cutting garden hedges.
- Most properties come unfurnished with no lights or curtains, so budget for home furnishings.

## INSURANCE

You are required to take household and fire insurance to cover the building and contents insurance for the cost of an equipped kitchen and the bathrooms.

## GIVING NOTICE

Notice must be given at least 3 months before the end of the contract in writing and sent by registered post by either the landlord or tenant.

[www.wortimmo.lu](http://www.wortimmo.lu)  
[www.athome.lu](http://www.athome.lu)  
[www.immotop.lu](http://www.immotop.lu)  
[www.immostar.lu](http://www.immostar.lu)  
[www.remax.lu](http://www.remax.lu)  
[www.nexvia.lu](http://www.nexvia.lu)  
[www.myresidence.lu](http://www.myresidence.lu)

[www.coldwellbanker-hestiagroup.lu](http://www.coldwellbanker-hestiagroup.lu)  
[www.housebrokers.lu](http://www.housebrokers.lu)  
[www.weckbecker.lu](http://www.weckbecker.lu)  
[www.ab-lux.com/en/](http://www.ab-lux.com/en/)  
[www.home.editus.lu/en](http://www.home.editus.lu/en)  
*for a list of smaller agencies*

## RENTAL TERMS

### CONTRAT DE BAIL À LOYER

The contract, is usually 1-2 years. Make sure it contains a clause that the landlord must repair or replace essential items such as heating systems, the dishwasher, and oven, within a time limit.

### DÉPÔT DE GARANTIE

Your deposit is usually a bank guarantee where money is held in an account that needs authorisation from both parties to be released. Half your deposit must be refunded within a month of you vacating a property, with the remainder paid after the annual account settlement for common charges.

### ÉTAT DES LIEUX

The inventory is a signed record of the condition of the rental property taken room by room, which notes any damage. Check all kitchen appliances, showers and the heating works, and the state of the wall and floor decoration. You sign it again on the day you move out to release your deposit.



## WHICH TYPES OF INSURANCE ARE REQUIRED IN LUXEMBOURG?

Although many types of insurance are essential, not all of them are required. Find out what is required, necessary or simply useful.



### TYPES OF INSURANCE THAT ARE LEGALLY REQUIRED IN LUXEMBOURG

#### MOTOR LIABILITY INSURANCE

Motor liability insurance for cars and motorcycles is part of the civil liability insurance that is legally required in Luxembourg. This requirement applies to all motor vehicles, as well as caravans and trailers. Civil liability insurance only covers damage that you may cause to third parties. For example, if you hit another vehicle, this insurance will compensate personal injury and material damage with respect to the victim as well as the passengers in your own vehicle.

#### PROFESSIONAL LIABILITY INSURANCE

Some professions are required to have specific insurance for their contractual liability, such as doctors, architects, travel agents, real-estate agents and lawyers. The professional liability insurance covers material or immaterial damage or body injury resulting from negligence, error or omission by self-employed workers or company workers.

#### SPECIFIC LIABILITY INSURANCE

Hunting requires you to take out specific liability insurance. Without insurance, you will not be able to obtain your hunting licence. Owners of all types of boats

(sail boats, catamarans, motorboats, etc.) are also required to have specific liability insurance for their vessels.

### TYPES OF INSURANCE THAT ARE CONTRACTUALLY REQUIRED

#### FIRE INSURANCE

There is no legal requirement to take out fire insurance, but you may be required to do so under a contract or lease. This is one of the clauses in mortgage loans. Banks want to make sure the property they're financing is insured.

#### COMPREHENSIVE INSURANCE

Full or partial comprehensive insurance is not normally required, but it may be required by the lender who finances your car.

### OPTIONAL INSURANCE PRIVATE LIABILITY INSURANCE

Private liability insurance is not required in Luxembourg unless you own a dog. However, it would be very unwise not to have it. It covers so many situations, e.g. if your child's ball breaks the neighbour's window or someone falls on the icy pavement in front of your house.

### PERSONAL ACCIDENTS COVER

Your child trips and falls at home, you are injured playing a new sport or slip on a wet floor inside a shop, all of these events are covered by the personal accident insurance. This optional insurance quickly becomes indispensable to be protected outside the workplace and excluding travel by car. In addition, personal accident insurance covers all the members of your household.

### HEALTH INSURANCE AND SUPPLEMENTARY HEALTH INSURANCE

As a worker in Luxembourg, you are automatically covered by the Caisse Nationale de Santé (CNS - national health service). This does not fully protect you, however, as the CNS only reimburses around 88% of healthcare expenses for adults. Supplementary health insurance is a good idea if you want better reimbursement.

**Discover our complete range of insurance products that can ensure you are protected and make your daily life easier.**



# FURNISHING YOUR HOME



Need to kit out your new home? This list has somewhere to suit every budget.

## IKEA

Across the border in Belgium, you can furnish your entire house except for fitted bathrooms. A good place to stock up on lamps, kitchenware, storage boxes, picture frames and house plants.

## MAISONS DU MONDE

Located in the Gare area, Bertrange, Pommerloch, and across the border in Sterpenich and Thionville, these shops stock memorable-looking bookcases and fancy sofas. It has more choice than IKEA but slightly higher prices, and it's good for mirrors, ornaments, towels, and kids' furniture.

## KICHECHEF

With an enormous showroom in Capellen's business park, this is the place for bespoke bedrooms, living rooms and kitchens, with a host of accessories and designer names. They deliver and install.

## DORMA HOME

Bertrange based outlet stocking Scandinavian-style furniture including sofas, beds, tables, and lighting. They can deliver and assemble.

## ABITARE LIVING, ABITARE KIDS

German furniture, including lighting, sofas, beds, tables, bookshelves, and garden furniture. The kids' store has a wide selection of bedroom furniture plus pushchairs, highchairs, toys, and a selection of Flexa, Scandinavian children's furniture. The showroom is in Junglinster.

## MEUBLES MICH-GILLEN

Gare-based and stocking mid-range priced sofas, wardrobes, bedroom furniture and more.

## BONN

City-based interior design store with sofas, dining room furniture, beds, lighting, and accessories, it offers a huge number of brands.

## BOCONCEPT

In Helfent/Bertrange, this upmarket furnishing store has contemporary metal, glass and upholstered pieces with a Danish feel, and instore design consultants.

## ROBIN BY SHERWOOD

Strassen-based concept store with an eclectic mix of home furnishings.

## GALERIE MODERNE

With 70 years' experience in kitchen design, this Grevenmacher-based company has sofas, kids' furniture, soft furnishings, cutlery, electronics, and kitchens in a selection of quality brands, and can deliver.

## DECKER LINE

A 4,000 sqm showroom filled with everything for living areas and bedrooms, located in Dudelange.

## SECOND-HAND

**TROC** in Esch-sur-Alzette for mirrors, wardrobes and more.

**ODDHAUS VINTAGE** sells unique and offbeat furniture and décor from the 50s, 60s and 70s.

**ROB VINTAGE** sells classic furniture and is based in Howald.

**NEI AARBECHT** is a charity supporting the long-term unemployed which sells furniture in their Helmdange shop.

**OKKASIONS BUTTIK** has second-hand furniture in Differdange.

**FACEBOOK GROUPS** where expats relocating sell their furniture and white goods such as Sell, Give, Exchange, 2nd Hand, and Free Your Stuff Luxembourg.

It's summer,  
**convertibles**  
**and SUVs**  
await you on  
**mycar.lu** !



**mycar.lu**

your advertising  
website in Luxembourg



# GETTING A CAR

The steps to take if you want to buy or lease a car.

## WAIT FOR AUTOFESTIVAL

Each year in late January and early February this car festival sees **170 showrooms** offer big dealership discounts. A third of car sales contracts are signed at the festival. If you want something second-hand, the **Auto Occasions Festival** is held in May.

### CHECKLIST FOR BUYING A CAR

- Fix a budget and remember electric cars and vans get a government subsidy of up to €8,000.
- List your car criteria in order of importance – make, model, fuel consumption, size, essential equipment, and main use such as commuting or family travel.
- Test drive more than one car on a route you drive regularly to try out road holding, manoeuvrability, acceleration, and comfort.

## FINANCING

You can pay outright, or opt for monthly payments either through a car loan or by leasing directly from the dealer. Car loans generally have more favourable rates than other personal loans because the vehicle acts as a guarantee.





Banks provide online calculators so you can work out the monthly payments over a certain time period. Some car dealers offer 0% interest loans, but check that this will not negate other discounts on offer.

Some companies offer their employees' discounts with specific dealers who run the company's car fleet, and if you work for an EU institution you can benefit from a VAT (value added tax) exemption if you buy a car above the VAT threshold.

### BUYING SECOND-HAND

- Cars are commonly sold at 6 years, after which they will need an annual technical inspection.
- Check a vehicle's maintenance and service record to see if it has had regular oil and filter changes.
- Inspect exterior paintwork, windows, windscreen, tyres and wipers and the air conditioning. Cars that have been idle on dealer forecourts may need a recharge of the AC unit.
- When you test drive, listen to the engine, and check the gears and brakes. Look for exhaust emissions as a car can fail its technical inspection on this.
- Call the ACL (*Automobile Club Luxembourg*) to give the car a check before buying.

### PAPERWORK

You will need to register the car in your name at one of the SNCA offices. You fill out a form applying for registration and bring the following documents:

- A bill of sale.
- Proof of valid insurance.
- The registration certificate Parts 1 and 2, given to you by the owner.
- A valid road worthiness technical inspection certificate.
- The European certificate of conformity.

You will be issued with temporary road tax valid for 30 days, during which time you can pay for 6 or 12 months of road tax.

If you buy a car from Germany, France, or Belgium, you will need to register it and get Luxembourgish licence plates.

- 📄 [www.snca.lu](http://www.snca.lu)
- 📄 [www.acl.lu](http://www.acl.lu)
- 📄 [www.fedamo.lu](http://www.fedamo.lu)





# HOSPITALS & HEALTHCARE

A guide to hospitals including A&E, surgery and other patient treatment in Luxembourg.

## WHO IS ENTITLED TO HOSPITAL TREATMENT?

All residents of Luxembourg are entitled to emergency healthcare. Non-emergency care is covered by the National Health Fund known as the *Caisse Nationale de Santé* (CNS), if you or your partner/spouse pay social security contributions.

## A&E

Go directly to the *Cas d'urgence* or emergency department at a hospital with your ID, social security card, private health insurance or European Health Insurance Card. Payment for treatment may be requested on site, or invoiced later, so keep receipts for reimbursement.

## GENERAL ADMISSION

You usually need a referral from your doctor or a medical specialist to be admitted to hospital. The speed of treatment in Luxembourg is very favourable compared to other EU countries.

## INPATIENT/OUTPATIENT


The CNS covers both types of treatment. For inpatient treatment you will generally share a room with 1-2 other people, or pay extra for a private room (sometimes covered by private insurance).

## REIMBURSEMENT

The CNS reimburses 80-100% of treatment, medical care, medication, tests, travel costs and medical devices or aids, plus rehabilitation costs. This includes maternity care.

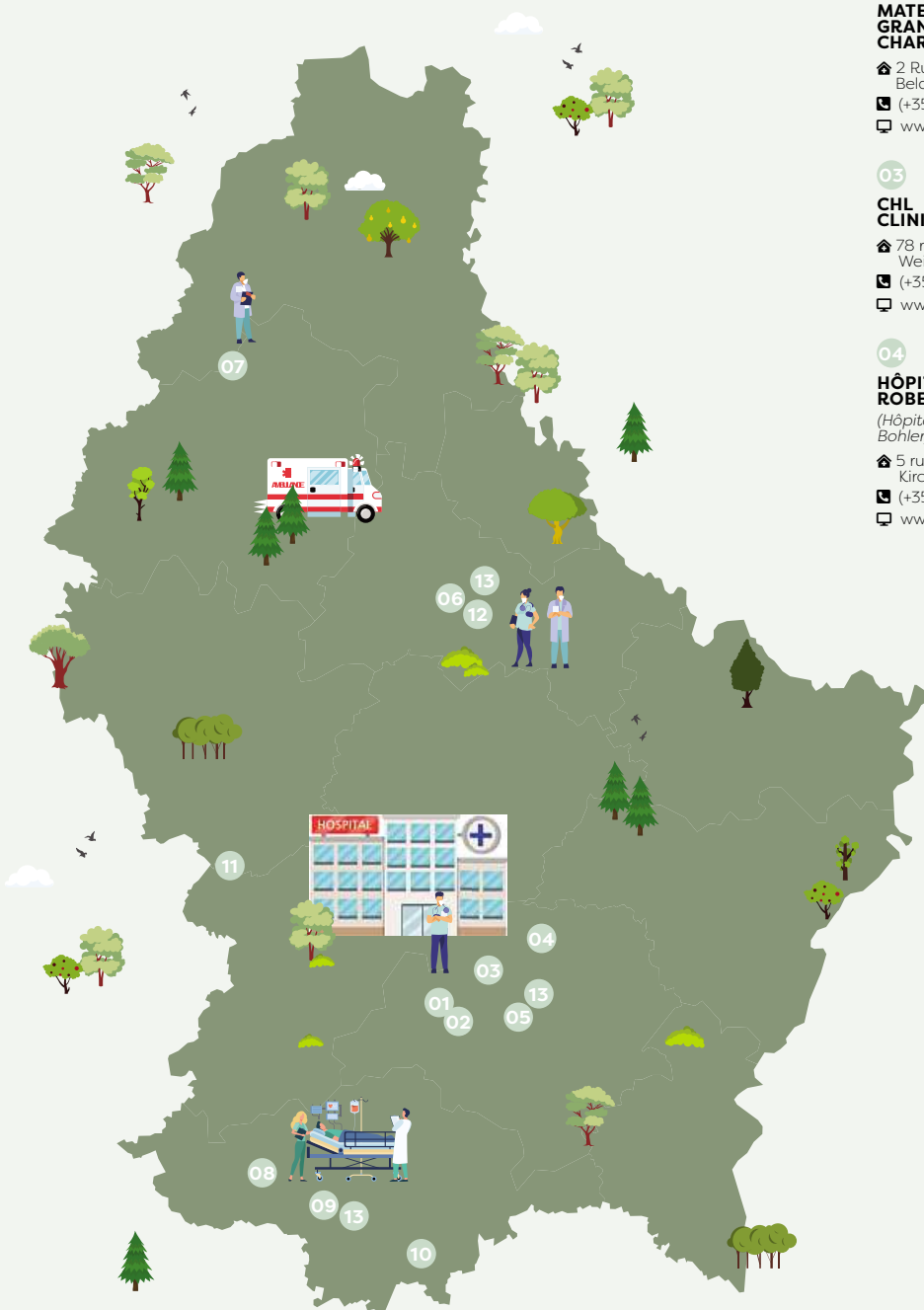
## SANTE.LU

The government health portal provides advice on illness prevention, how to get reimbursed for health expenditure, and has articles, publications and legislation relating to healthcare matters.

 [www.sante.lu](http://www.sante.lu)



# LUXEMBOURG *HOSPITALS*



01

## CENTRE HOSPITALIER DE LUXEMBOURG (CHL)

This includes the Kanner Klinik for children

📍 4 rue Ernest Barblé, Strassen

☎ (+352) 44 11 11

☎ (+352) 44 11 31 33 (Kanner Klinik)

💻 [www.chl.lu](http://www.chl.lu)

02

## MATERNITÉ GRANDE-DUCHESSE CHARLOTTE

📍 2 Rue Pierre Federspiel, Belair

☎ (+352) 44 11 11

💻 [www.chl.lu](http://www.chl.lu)

03

## CHL CLINIQUE D'EICH

📍 78 rue d'Eich, Weimerskirch

☎ (+352) 44 11 12

💻 [www.chl.lu](http://www.chl.lu)

04

## HÔPITAUX ROBERT SCHUMAN

(Hôpital Kirchberg/ Clinique Bohler)

📍 5 rue Edward Steichen, Kirchberg

☎ (+352) 24 68 1

💻 [www.hopitauxschuman.lu](http://www.hopitauxschuman.lu)

05

## ZITHAKLINIK

📍 20-30 rue d'Anvers, Gare

☎ (+352) 28 88 1

💻 [www.hopitauxschuman.lu](http://www.hopitauxschuman.lu)

06

## CENTRE HOSPITALIER DU NORD

📍 120 Avenue Lucien Salentiny, Ettelbruck

☎ (+352) 81 66 1

💻 [www.chdn.lu](http://www.chdn.lu)

07

## CLINIQUE SAINT-JOSEPH

📍 10 rue Grande-Duchesse Charlotte, Wiltz

☎ (+352) 81 66 9

💻 [www.chdn.lu](http://www.chdn.lu)

08

## CENTRE HOSPITALIER EMILE MAYRISCH

📍 Rue Emile Mayrisch, Esch-sur-Alzette

☎ (+352) 57 11 1

💻 [www.chem.lu](http://www.chem.lu)

09

## HÔPITAL PRINCESSE MARIE-ASTRID

📍 187 Avenue de la Liberté, Nieder Korn

☎ (+352) 57 11 1

💻 [www.chem.lu](http://www.chem.lu)

10

## HÔPITAL DE LA VILLE DE DUDELANGE

📍 98 rue de l'Hôpital, Dudelange

☎ (+352) 57 11 1

💻 [www.chem.lu](http://www.chem.lu)

11

## HÔPITAL INTERCOMMUNAL

📍 1 rue de l'Hôpital, Steinfort

☎ (+352) 39 94 91 1

💻 [www.his.lu](http://www.his.lu)

12

## CENTRE HOSPITALIER NEURO-PSYCHIATRIQUE

📍 17 Avenue des Alliés, Ettelbruck

☎ (+352) 26 821

💻 [www.chnp.lu](http://www.chnp.lu)

13

## FAMILY PLANNING

City, Esch-Belval, Ettelbruck

💻 [www.pfl.lu](http://www.pfl.lu)

# HOW THE CNS WORKS

If you live in Luxembourg and pay social security contributions, you are entitled to healthcare benefits. We guide you through who and what is covered, and how to claim medical costs.



## ACRONYMS

**CCSS** or **Centre Commun de la Sécurité Sociale** is the Joint Centre for Social Security. You will pay a certain amount of your monthly salary to the CCSS.

**CNS** or **Caisse Nationale de Santé** is the National Health Fund which pays for or reimburses medical costs.

## HOW TO GET CNS HEALTHCARE

Your employer will declare your job and salary to the CCSS and you will receive a letter confirming you are part of the social security system. If you are self-employed you must register with the CCSS. Once registered, you receive a social security card that covers you for sickness, maternity, work-related accidents or illnesses, an old age pension, disability, and long-term care.

There are exceptions, which include employees at the European Union institutions or at the NATO Support and Procurement Agency, who do not join the CNS or pay contributions, but have separate cover. This also includes employees on secondment with an international company who usually have private medical cover.

## ARE FAMILY MEMBERS COVERED?

Children or minors under 30 years who live in Luxembourg can be co-insured by a parent. Spouses and civil partners will also be covered if they are not working or covered by another scheme. In the latter case, children will join the CNS with the parent who pays social security.

## HOW THE SYSTEM WORKS

In most cases, such as a visit to the doctor or dentist, you pay the costs upfront and send the original receipted invoice to the CNS, checking your social security number is on it (*if not, write it on*).

The first time you do this, you must include a *Relevé d'Identité Bancaire* or RIB, which you can download from your bank online. If you pay by bank transfer after treatment, remember to include a copy of proof of payment. Keep a copy of the original invoice in case you need to query payment.

Send paid invoices to:  
CNS Reimbursements  
L-2980  
No stamp is required.

Some costs are settled directly, and you will only be asked to pay your contribution. This is the case with pharmacies and blood test laboratories. Some specialists and GPs now only charge you the additional costs not covered by the CNS.

### HOSPITAL COSTS

Costs such as beds are paid for directly by the CNS, but anyone aged 18 years or more will be asked to pay a participation cost of between €11.84 and €23.68 per day depending on if you are a day care or inpatient. Maternity and psychiatric treatment have different rules.

Hospital doctors or specialists will issue an invoice which you pay upfront and then request reimbursement.

### DOCTORS AND DENTISTS

Dental care of up to €60 per calendar year is covered, after which procedures are reimbursed at different rates and tariffs. Dentists must inform you in writing of the cost of treatment in advance, but they can set their own fee. Check-ups, tartar removal, cavities, root canal work and surgical extraction of a tooth are covered by up to 88% of treatment at a standard rate.

Orthodontic treatment including braces is covered to a standard rate for patients less than 17 years old with prior consent from the CNS. You will be informed of the amount to be reimbursed when you submit the dentist's estimate of costs. False teeth are covered between 80-100%.

### PRESCRIPTIONS

You must have a prescription for medication to be reimbursed. Treatment should be on the CNS list, and if it is not the pharmacist will usually explain this and the cost before you purchase any medication.

### SPECIALIST CARE

Your doctor can issue a prescription for certain treatment such as physiotherapy, speech therapy, or pre-diabetic dietician support. Any medical professional you see must be registered with the CNS, including paediatricians, gynaecologists, and psychiatrists.

### INCAPACITY TO WORK

Your employer must pay you during sick leave or following an occupational accident or illness until the month in which you take your 77<sup>th</sup> day of sick leave. After that, the CNS will continue to pay benefits for a total of 78

weeks. Medical certificates must be sent before the third day of sick leave to the Department of Financial Compensation Payment (*Services Gestion des Indemnités Pécuniaires, L-2979*).

### MATERNITY

To be entitled to paid maternity leave you must have completed six months of work in the 12 months preceding your leave. You will get pre-natal leave of 8 weeks and post-natal leave of 12 weeks, or a total of 20 weeks. Spouses and civil partners are entitled to paternity leave.

To request maternity payment, you must submit a medical certificate in the last 12 weeks of your pregnancy indicating your due date to the Department of Financial Compensation Payment.

Family benefits include a birth allowance, a monthly child allowance, and access to parental leave for children aged 12 years or less.

 [www.cns.public.lu/en](http://www.cns.public.lu/en)

 [www.ccss.lu](http://www.ccss.lu)



# FINDING A JOB

If you're an accompanying spouse or partner and want to find work, Luxembourg has a buoyant job market.



## POPULAR EMPLOYMENT SECTORS



Finance



Accountancy



Law



Media



IT



Teaching



Telecommunications

## PROFESSIONAL QUALIFICATIONS

Qualifications attained from a member state of the European Higher Education Area are recognised, but if you practise law, medicine, nursing, or other regulated professions, you may need to get your qualifications formerly recognised.



## PREPARE YOUR CV

Maximum of two pages in length.

Include your previous experience, training, language competencies and ICT skills.

A digital photo.

## REGISTER WITH ADEM

The *Agence pour le Développement de l'Emploi* is Luxembourg's employment agency. You can register as a jobseeker online or via its contact centre on +352 247 88 888.

ADEM provides free advice and a jobs board in English.

[www.adem.lu](http://www.adem.lu)

## EU INSTITUTIONS

The European Union institutions based in Luxembourg have opportunities in various roles including administrative assistants, translators, lawyers, accountants, and communications and HR personnel.

To apply, use the Europass CV template.

<https://epso.europa.eu/en/job-opportunities/open-for-application>

## SALARIES, CONTRACTS AND WORKING CONDITIONS

Luxembourg has the highest social minimum wage in the EU, at between €2,508 and €3,009 for 18 years or more, depending on your skills level. The standard working week is 40 hours, and contracts are either permanent (*CDI*) or for a fixed term (*CDD*). It is recommended that any contract is in writing and signed.

## JOB AGENCIES



- [www.jobfinder.lu](http://www.jobfinder.lu)
- [www.expatica.com/lu/jobs](http://www.expatica.com/lu/jobs)
- [www.monster.lu](http://www.monster.lu)
- [www.moovijob.com](http://www.moovijob.com)
- [www.jobs.lu](http://www.jobs.lu)
- [www.indeed.lu](http://www.indeed.lu)
- [www.ictjobs.lu](http://www.ictjobs.lu)
- [www.multilingualvacancies.com](http://www.multilingualvacancies.com)
- [www.efinancialcareers.lu](http://www.efinancialcareers.lu)
- [www.editus.lu](http://www.editus.lu) (list of employment agencies)

Deposit-free rental guarantee

# Do you need help moving to Luxembourg?



We can act as **guarantor for your security deposit** for your new home for **up to €5,000**, without any contribution from you\*. This leaves you with money to buy furniture and decorate, etc.



You can also get our **Exclusive Pack free of charge for six months\*** to make your day-to-day banking easier.

More information in-branch or at

[bgl.lu/en/rental-guarantee](https://bgl.lu/en/rental-guarantee)

\*Offers subject to terms and conditions and approval of your application by the bank. More info in-branch and on [bgl.lu](https://bgl.lu).  
BGL BNP PARIBAS S.A. (50, avenue J.F. Kennedy, L-2951 Luxembourg, R.C.S. Luxembourg : B 6481) Marketing Communication August 2023



**BGL  
BNP PARIBAS**

The bank  
for a changing  
world

# STARTING *A BUSINESS*

If you've got a great idea or proposition, you can turn it into a business with help and guidance.



## START WITH THE BUSINESS PORTAL ON GUICHET.LU

- Process for getting a business permit.
- How to enrol with the Trade and Companies register.
- How to enrol for VAT and social security.
- Legal forms.
- Financial aid, crowd-funding, bank financing, and equity and loan options.
- Tax, accounting, and international trade.
- How to find premises.

## WHERE CAN I GET HELP?

- Nyuko runs free business launch programmes which include help with mapping out finances, and meeting commercial and communication requirements, and the help of a mentor.
- The House of Entrepreneurship provides guidance in English on business permit applications.
- The House of Start-ups powered by the Chamber of Commerce can give you access to IT and an incubator environment. It runs networking events to boost business contacts too.

## SETTING UP A SOCIÉTÉ À RESPONSABILITÉ LIMITÉE (SARL) FOR €1

You can set up a simplified limited liability company for as little as €1 to a maximum of €12,000. The private deed dissociates your business assets from your private assets.

## USEFUL WEBSITES

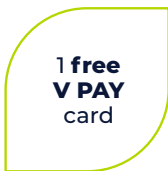
- 🖥 [www.houseofentrepreneurship.lu/en](http://www.houseofentrepreneurship.lu/en)
- 🖥 [www.startupluxembourg.com](http://www.startupluxembourg.com)
- 🖥 <https://nyuko.lu/en>
- 🖥 [www.luxinnovation.lu](http://www.luxinnovation.lu)
- 🖥 [www.1535.lu](http://www.1535.lu)
- 🖥 [www.cityincubator.lu](http://www.cityincubator.lu)

Documents accompanying a business permit application must be translated into French or German.





**Welcome to Luxembourg.  
Welcome to Raiffeisen.**



Enjoy your advantages free of charge for 1 year in your nearest branch or at [raiffeisen.lu](https://raiffeisen.lu)



**The Bank that belongs to its members**

# WHAT INSURANCE COVER MUST YOU GET?

Certain insurance is mandatory in Luxembourg, but you can also opt for additional cover.



## CAR INSURANCE

- **RESPONSABILITÉ CIVILE** is mandatory. It covers damage to a third party.
- **TIERS PERSONNES** covers third party and fire and theft.
- **TOUS RISQUES OR CASCO** is fully comprehensive cover.

**Proof of a No Claims Bonus** (up to 13 years) will result in a significant reduction to premiums.



## HEALTH INSURANCE

- If you pay social security contributions then you are entitled to CNS medical cover.
- Your social security card doubles as your European Health Insurance Card.
- Non-working foreign residents need proof of private health cover to obtain a residence permit.
- Third country nationals including students will need private health insurance to get a visa.
- EU institution workers receive healthcare insurance as part of their remuneration package.
- Pet insurance is not compulsory and only AXA provides cover in Luxembourg.

## HOME INSURANCE

- Buildings insurance is not a legal requirement but is mandatory for most banks to provide a mortgage loan.
- Buildings cover should include kitchen units, integral appliances and sanitaryware.
- Contents covers your furniture, clothing, and other household appliances such as a TV.

Check if your apartment rental includes buildings cover in the service charges.



## COMPARISON WEBSITES:

- 📱 [www.topassur.lu](http://www.topassur.lu)
- 📱 [www.weicker-assurances.lu](http://www.weicker-assurances.lu)

You can find a list of life and non-life insurers on the *Commissariat aux Assurances* website.

📱 [www.caa.lu](http://www.caa.lu)

# INSURANCES IN LUXEMBOURG: WHAT YOU NEED TO KNOW.

You are new in Luxembourg and need to buy out an insurance for your car or your home? Here are some differences that may be puzzling at first.

## CAR INSURANCES ARE MORE EXPENSIVE, BUT THERE'S NO ALLOWANCE

Car insurances are more expensive due to the country size, which is smaller, but they offer a better cover especially if you have an all-risks insurance (called Casco). Moreover, you don't have to pay a car allowance(-franchise) on top in case of an accident.

There are other peculiarities: for example, the driver is not automatically insured. It is an option called the "protected driver cover" (conducteur protégé): it covers the driver in case of physical injuries. Make sure to check with your insurer you're properly insured.

## HOME INSURANCE: GUARANTEES NOT TO BE OVERLOOKED

Traditionally, some guarantees are not included in the standard package of a home insurance. As an example, the third-party liability (or responsabilité civile-RC), which covers you in the event of damage caused to others, is an option. You should think about it, especially if you have kids or drive a bike. You can subscribe it individually or add it to your home insurance policy.

One other major guarantee to consider is the flood cover, which is also optional; if your contract does not comprise this cover, you will not be reimbursed.

You can also include in your contract a bunch of useful options to cover goods on the move (like leisure goods and telephone). Check with your agent to have the insurance tailored to your needs.

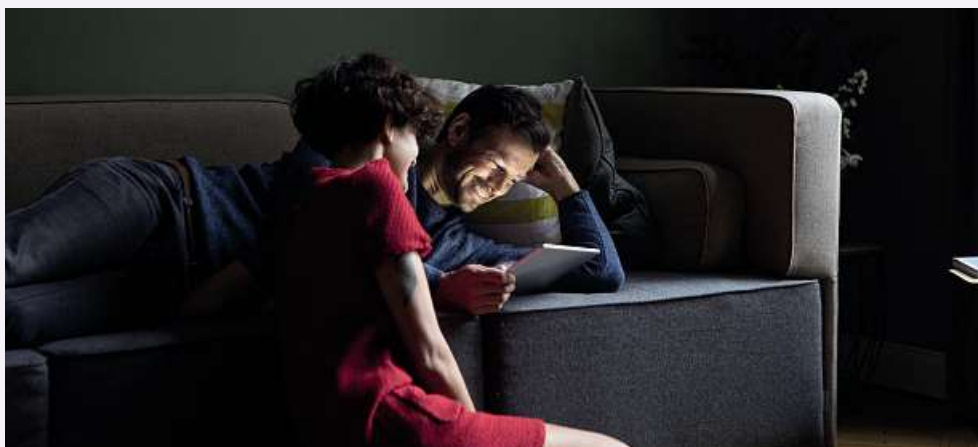
Did you know?  
Some insurance premiums are tax-deductible and allow you to reduce the amount of tax you pay.

## A LOT OF INSURANCE PREMIUMS ARE TAX DEDUCTIBLE

Some insurance premiums are tax deductible according to articles 111

LIR and 111bis LIR.; these premiums are called "special expenses". You can deduct the third-party liability insurance (responsabilité civile) and premiums on your life insurance contracts from €672 depending on whether you're single or not and if you have children or not. If you buy a house and contract a mortgage with outstanding balance insurance (solde restant dû) that you pay in a lump sum you can deduct from €6,000 depending on your age and your marital status.

Finally, did you know that you can build up capital for your retirement while taking advantage of tax deductions each year? With a pension policy, you have the opportunity to grow your retirement savings or generate additional income while deducting up to a maximum of €3,000 annually.



[www.baloise.lu](http://www.baloise.lu)

 **baloise**

# GETTING A PET

Everything you need to know about bringing your pet to Luxembourg or getting one when you arrive.



## REGISTERING YOUR DOG OR CAT

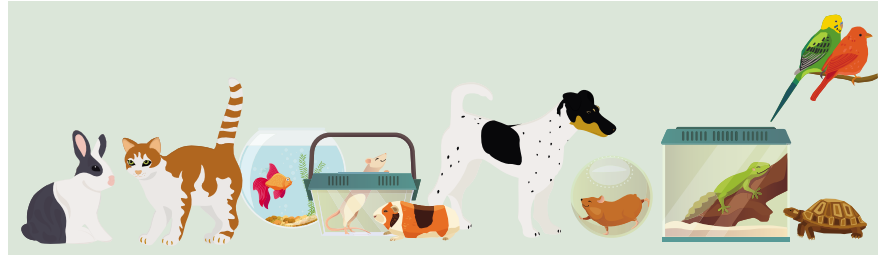
- Dogs must be registered and microchipped within one month of adoption.
- Registered vets can microchip and vaccinate against rabies.
- You must register your dog at your local municipality offices. You will need a vet's certificate stating the breed, proof of vaccination against rabies, and liability insurance.
- Dog owners pay dog tax to the local municipality.
- Cats must be microchipped but not registered.
- Both cats and dogs should have a passport. Rescue shelters provide European pet passports upon adoption, which state the vaccinations the animal has had.

Find the full rules for bringing your pet from overseas:

[www.pettravel.com/immigration/Luxembourg.cfm](http://www.pettravel.com/immigration/Luxembourg.cfm)

## WHEN TO KEEP YOUR DOG ON A LEAD

In built up areas, public car parks, sports grounds, children's play parks, on public transport, and on some forest paths (indicated with a sign).



## WHAT TO DO IN AN EMERGENCY

### SOS VET

[\(+352\) 27 510 112](tel:+35227510112)

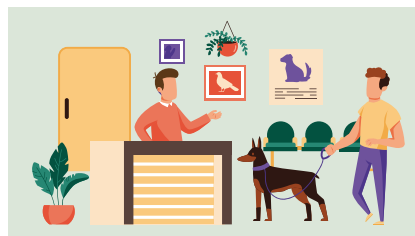
[www.sosvet.lu/](http://www.sosvet.lu/)

### ASSOCIATION OF VETS

[www.lak.lu/fr/lak/emergency](http://www.lak.lu/fr/lak/emergency)

## ADOPTING A RESCUE PET

- Consider if your living conditions are suitable, for example you have a garden.
- Visit a pet shelter or rescue foster family to build a relationship with your future pet.
- Adoption requires proof of address and ID, and you may be charged a fee for microchipping, sterilization, and vaccinations.



## LIST OF RESCUE ORGANISATIONS

### SOS ANIMAUX

[58 rue de l'Avenir](#)

### DÉIERENASYL

[6 boulevard de Kockelscheuer](#)

### ASILE DUDELANGE SHELTER

[45 rue de la Forêt](#)

### ESCHER DÉIERESCHUTZ SEPA

[121 rue Bourgrund](#)

### SCHËFFLENGER DÉIERESCHUTZVERÄIN SHELTER

[rue de Hédange](#)

### SRPA ARLON

[351 route de Luxembourg \(Belgium\)](#)

### SPA THIONVILLE

[101 chemin des Mineurs \(France\)](#)

## WHERE TO FIND BREEDERS

<https://luxcatclub.lu/>

[www.eurobreeder.com/breeders/luxembourg\\_dog\\_breeders.htm](http://www.eurobreeder.com/breeders/luxembourg_dog_breeders.htm)

## PEACE OF MIND *FOR PET OWNERS*

Luxembourg is a nation of animal lovers, with dogs and cats being especially popular pets. But what many new pet owners don't realise is exactly how much expense can be involved in looking after the health of their four-legged friend. AXA Luxembourg is on hand to help.



According to the Luxembourg Kennel Club (Fédération Cynologique Luxembourgeoise), there were some 83,000 dog owners in the grand duchy in 2022, while a study by the FEDIAF European Pet Food Industry estimates there are just over 69,000 domesticated cats in Luxembourg.

That is a lot of work for the 280 or so registered veterinarians in the country. And visits to the vet, be it for regular treatments or emergencies, come at a price for pet owners.

### **COSTS CAN MOUNT**

Most dogs will require at least two annual trips to the

vet each year. And while these consultations cost a modest €35 to €45 each, any further intervention that is required to treat injury or sickness to a dog can soon see the bills mount up. Hopefully your pet will never need a life-saving emergency operation, but some orthopaedic surgery, such as hip replacement or cruciate ligament repair, is becoming increasingly common according to veterinarians. These can cost anything between €1,000 and €2,000, and that's without adding the cost of hospitalization and day care.

Cats are no exception. They require a series of vaccinations in their first year, and by law domestic cats must be castrated or sterilized, which again costs between €150 and €300. Cats that go outdoors are also territorial, which inevitably means they get into scrapes that can leave them with wounds and sores. And if they get struck by a vehicle, prosthetics can cost up to €2,000.

### **RANGE OF INSURANCE PLANS**

Luckily, AXA Luxembourg has a range of insurance plans aimed at dog and cat owners that will cover or partially cover the costs of visits to the vet and of sur-

gery and hospitalisation, up to a total of €2,500 per year. For example, if you take out the "Easy" insurance contract, you will be reimbursed any costs for an intervention above €150. The "Easy Plus" formula covers the costs over €90 and the premium "Comfort" policy pays out anything over €30.

The insurance also covers the costs of vaccination and sterilisation if the pet is under two years old. And if your pet needs a CT scan, ultrasound, thermography or fibroscopy examination, or has to undergo radiotherapy or chemotherapy, the costs up to €100 will also be reimbursed.

The insurance policies are open to any pet registered in Luxembourg whose vaccination plan is up to date and that meets certain age requirements.

Peace of mind for pet owners has never been easier, allowing you to fully enjoy the companionship of your beloved cat or dog.

# LUXEMBOURG TRADITIONS

Get to know Luxembourg through the Grand Duchy's unique traditions.



## DRAÄKINNEKSDAG

**When:** 6 January

**What:** Celebrating the feast of the Epiphany with a frangi-pane-filled, paper crown-topped cake. If your slice contains the porcelain figurine known as the *fève*, you will be crowned king or queen for the day.

## LIICHTMËSSDAG

**When:** 2 February

**What:** The children of Luxembourg take to the streets to celebrate Candlemas Day carrying lanterns or *Liichtebengelcher*, knocking on doors and singing *Léiwer Herrgottsbleischen*, in return for treats.



## FUESENT

**When:** Candlemas until Ash Wednesday

**What:** Don fancy dress, feast on donuts and join the *Fuesgecken*, or Carnival revellers on parade or at a masked ball in one of Luxembourg's cities or towns. The Moselle town of Remich carries a straw man through the streets before setting him alight, whilst Diekirch has the largest Carnival cavalcade.

## BUERGBRENNEN

**When:** First week-end of Lent

**What:** Bonfires are lit throughout Luxembourg to banish pesky winter spirits and welcome spring. Wooden crosses or castles are erected on pyres known as *buer-gen*. Children carry torches in a procession or *Fakelzuch*, and throw them to light the pyre.

## BRETZELSONNDEG

**When:** Fourth Sunday of Lent

**What:** Men give their sweetheart a sugar and almond coated pretzel. If their love is requited they'll get a basket of eggs on Easter Sunday. On leap years the roles are reversed.

## KLIBBEREN

**When:** Maundy Thursday to Easter Sunday

**What:** Legend says that Luxembourg's church bells fly to Rome on Maundy Thursday to confess their sins to the Pope. Without the bell chimes, children are called upon to break the silence using rattles – *Klibberen* roughly translates in "to go rattling".



## MEEKRANZ

**When:** 1 May

**What:** Head out into the forests with your neighbours to make a traditional May wreath to hang on your door, from young branches. You can also sample *Maitrank*, a concoction of white wine and sweet woodruff.

### OKTAV MARKET AND PROCESSION

**When:** Fifth Sunday after Easter

**What:** Head to the Oktav markets at Place Guillaume II or Place de la Constitution in the two weeks prior, or join the street procession which dates to the 17<sup>th</sup> century. Started by the Jesuit mission in Luxembourg, the statue of Our Lady, Mary, comforter of the afflicted, on display at the Notre Dame Cathedral, is carried through the streets.

### NATIONAL DAY

**When:** 23 June

**What:** A 19<sup>th</sup> century tradition celebrating the Grand Duke's birthday, the first recorded torchlight procession took place in 1840. The date in June was made a statutory holiday in 1948, with a procession and street party on the eve of National Day, rounded off with a spectacular firework display.

The more ceremonial National Day sees the Grand Duke award honours to citizens, and is followed by a military parade, during which the national anthem *Ons Heemecht* is sung.



### SPRANGPRESSESIOUN

**When:** Whit Tuesday

**What:** A UNESCO-recognised, ancient dancing pilgrimage to honour St Willibrord, who founded Echternach Abbey in the 7<sup>th</sup> century. Rows of six dancers hold each other by the tip of their handkerchiefs and move from left to right in a jumping movement, swinging their legs out, in a slow procession towards the saint's tomb.

### SCHUEBERFOUER

**When:** 23 August to 11 September (2023)

**What:** A unique Luxembourgish celebration with a 680-year-old history, it began as a week-long market, started by John the Blind. The tradition turned into a cattle fair, and then a funfair, moving to Glacis. To open it, a shepherd herds sheep through the streets whilst musicians play the *Hämmelsmarsch* or Mutton March, and the funfair has thrill rides plus culinary specialities such as whit-fried in beer batter.

### D'TRAULICHT & TOUSSAINT

**When:** 31 October and 1 November

**What:** *D'Trauliicht Brennen* is an Ardennes tradition carried out on Halloween, where beets are carved with scary faces and lit inside with a candle. In times gone by, these lanterns were placed outside cowsheds and barns to prevent livestock getting illnesses brought by bad spirits, and on window ledges to protect the family from the souls of the dead.

*Toussaint* or All Saints is when Luxembourgers clean their ancestral tombs and put fresh flowers on graves.



### KLEESERCHERSDAG

**When:** 6 December

**What:** On the eve of 6 December children put out their slippers in the hope of a reward from *Kleeschen*, also known as Saint Nicolas. He wears a red mitre, carries a staff, and is accompanied by a donkey and the mean *Houséker* who gives naughty children a flick of his switch made from branches. *Boxemännchen*, doughy gingerbread men, are traditionally eaten on 6 December for breakfast.

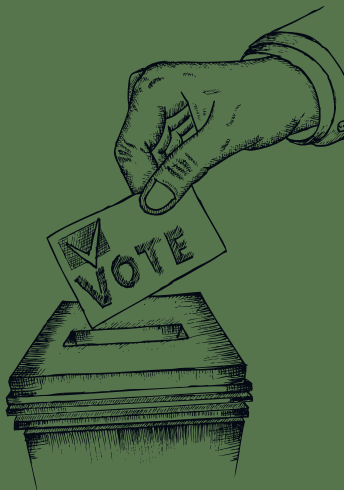
# VOTING IN LUXEMBOURG'S MUNICIPAL ELECTIONS

All registered residents aged 18 years or more can vote in local elections.



## WHEN?

Every six years  
(last one 11 June  
2023).



## WHAT DO MUNICIPALITIES MANAGE?

Transport, nursery and primary education facilities and playgrounds, housing development, water, including waste water, waste management, sports facilities, social welfare offices and roads owned by the commune (not through roads).



“

**My voice,  
my choice**

<https://jepeuvoter.lu/en/>

”



## HOW DO I REGISTER TO VOTE?

You can register to vote on [Guichet.lu](https://guichet.lu) or at your local municipality. You must do so 55 days prior to the election. Voting is mandatory.





## HOW DO I VOTE ON ELECTION DAY?

Proportional representation is used for municipalities of more than 3,000 inhabitants. You get the same number of votes as the number of councillors to be elected, and you can

allocate your votes to a party or a candidate, giving up to two votes to one person. Foreign residents can also stand as candidates.

 <https://www.letzvote.lu/en/municipal-elections/>

## POSTAL VOTE

You can apply for a postal vote and will receive your ballot two weeks before the election. Ballots come with two separate envelopes that must be used. The main envelop has a pre-paid stamp. Voters can post their ballot at any point before the election, but it must arrive at the polling station before or on election day.



## WHO CAN VOTE IN OTHER ELECTIONS?

### NATIONAL ELECTIONS

Luxembourg is a constitutional monarchy, with elections for 60 members of the Chamber of Deputies taking place every five years (next one 8 October 2023). To vote you must be a Luxembourgish citizen and 18 years or over.

### EU ELECTIONS

Every five years (next one in 2024), Luxembourg votes for six Members of the European Parliament. To vote, you must be a citizen of an EU27 country and be 18 years or more. You can register at your local municipality.



# EDUCATION & FAMILY

## CHOOSING A SCHOOL



Finding the right school for your child is important, and thankfully Luxembourg has several options from free state-run international and local schools, to fee-paying private education offerings, and ones managed by the EU for its civil servants but with spaces for other students.

Our education guide takes you through a checklist of things to consider when choosing a school, from location, transport, school hours and languages, to final qualifications and the difference between an International or European Baccalaureate, the IGCE/ A level system, and the Luxembourgish Diploma.

We also list all the international schools with English language sections, so you can plan a visit or research further online.



# CHILDCARE OPTIONS ?

If both parents will be working, you might need childcare for babies and toddlers, or wraparound care for children under 12 years. We take you through the options available and the financial support given by the state.

“

**Every child  
in Luxembourg has  
the right to a quality  
education.**

Claude Meisch, Minister for Education, 2022.

”

# LANGUAGE CLASSES

You might not speak any of the official languages of Luxembourg – German, French or Luxembourgish. Don't worry, there are plenty of courses to help you learn them, in addition to conversation exchange groups. The Luxembourg Integration Contract gives you discounts on language classes and the chance to join orientation and citizenship sessions.



# FINDING *THE RIGHT SCHOOL*

Luxembourg has a huge choice of schooling systems in several languages. Here's our guide to help you decide which school is best for your child.

Compulsory school years are from ages 4 to 16 years. It is also legal to home school your child.

## WHAT TO CONSIDER?

### HOW LONG YOU PLAN TO STAY?

- If you're only staying a few years, then an international school might be the best option.
- If you come from another EU country and plan to return, then the EU institutional schools ensure your child stays fluent in their native language.
- If you plan to stay indefinitely, the local school system will help your child and family integrate.

### LANGUAGES OR SPECIAL EDUCATION NEEDS

What languages does your child speak now, what languages would you like them to speak, and what support will that require. If you have a child with special education needs, check what in-school support is available.

### APPLICATION DEADLINES AND ENTRY TESTS

Public and private international schools have varying application deadlines and some require tests and interviews before an offer is made.



### SCHOOL INTAKE YEAR

School intake years vary from September to August or January to December, which determines whether your child is the youngest or oldest in the class. Private and EU institutional schools start secondary school at age 11 years, whereas state international and local schools start at age 12 years.

### QUALIFICATIONS

Is your child a specialist or a generalist in core subjects? This will influence whether you choose an International or European Baccalaureate, IGSCE/ A level, or a Luxembourgish Diploma as a final qualification.

### LOCATION AND SCHOOL HOURS

Different systems have different daily attendance. Some schools have a uniform number of hours per day, whilst others have longer and shorter days. Consider if there are buses – either public or organised by the school, and wraparound care available for younger children if you both work.

### ASK QUESTIONS

Most schools have open days for parents, or you can ask about specific schools via online parent forums.



We ensure that everyone in our community becomes inspired, resilient and passionate about achieving what matters, anywhere in the world.



### IB V EB V IGCSE?

**IB** in French or English, with six subjects, three to standard and three to higher level. First and second languages plus maths are compulsory, as is one humanity and one science subject. Students must undertake a Theory of Knowledge course, an Extended Essay, and a CAS (creativity, activity, science) project.

**IGCSE/ A levels** in English only. Seven plus **IGCSEs** are taken at 15-17 years, and must include English, maths, a second language, and science. At 17-19 years students take 2+ A levels and can choose from classical subjects or specialist ones such as psychology or environmental studies.

At least two languages, once science subject, human sciences, ethics/ religion, and philosophy must be taken to **European Baccalaureate** level. The latter three subjects are taken in the student's second language. Additional science, social science, humanity, and language options can also be chosen.

### LUXEMBOURGISH SCHOOL SYSTEM IN A NUTSHELL

- Fundamental education starts at age 4 years, finishes at age 12 years, and is divided into 4 cycles.
  - Secondary education lasts 6-7 years with general or classical options, or vocational training.
  - At primary level, the teaching language is Luxembourgish, then German. Children also learn French.
  - At secondary level, the teaching language is German for four years, then French for the final years.
  - Children under 12 years attend the school in their municipality. Secondary students can apply more widely.
- 📄 [www.men.lu](http://www.men.lu)

### STATE-RUN INTERNATIONAL SCHOOLS FOR THE IB AND IGCSE/ A LEVEL

#### LYCÉE INTERNATIONAL SCHOOL MICHEL LUCIUS (LIMPERTSBERG)

Ages: 6-18+ years

Curriculum: Cambridge Primary Curriculum and International IGCSE and A level.

Entry: English and maths tests may be required.

📄 [www.lml.lu](http://www.lml.lu)



#### ATHÉNÉE DE LUXEMBOURG (MERL)

Ages: 11/12 -18+ years

Curriculum: English section which follows the IB programme.

Entry: at 7<sup>th</sup> grade with English and maths tests, and at 10<sup>th</sup> grade with English, maths, science, and French tests.

📄 [www.al.lu](http://www.al.lu)

An IB in French is offered at the Lycée Technique du Centre (City) and at the Waldorfschoul (Limpertsberg).

📄 [www.ltc.lu](http://www.ltc.lu)

📄 <https://waldorf.lu/index.php>

### STATE-RUN INTERNATIONAL SCHOOLS (EUROPEAN BACCALAUREATE)

#### INTERNATIONAL SCHOOL DIFFERDANGE & ESCH-SUR-ALZETTE

Ages: 5/6 to 18+ years

Sections: English, French, German, and Portuguese.

📄 <https://portal.education.lu/eid/>

#### LËNSTER LYCÉE INTERNATIONAL SCHOOL (JUNGLINSTER)

Ages: 4-18+ years

Sections: English, French and German.

📄 [www.lensterlycee.lu](http://www.lensterlycee.lu)

#### INTERNATIONAL SCHOOL MONDORF-LES-BAINS

Ages: 6-18+ years

Sections: English, French and German.

📄 [www.eimlb.lu/fr](http://www.eimlb.lu/fr)



**The MyGuichet.lu app:**  
my administrative procedures  
**where I want, when I want,  
how I want!**

Available on



 **Guichet.lu**

**INTERNATIONAL SCHOOL ANNE BEFFORT (MERSCH)****Ages:** 6-18+ years**Sections:** English, French and Portuguese (German as a second language). Boarding school option.📧 [www.eimab.lu](http://www.eimab.lu)**INTERNATIONAL SCHOOL GASTON THORN (CESSANGE/MERL)****Ages:** 6-18+ years**Sections:** English, French and German.📧 [www.eigt.lu](http://www.eigt.lu)**LYCÉE EDWARD STEICHEN (CLERVAUX)****Ages:** 4-18+ years**Sections:** English, French and German.📧 [www.lesc.lu](http://www.lesc.lu)**EU INSTITUTION SCHOOLS****EUROPEAN SCHOOL LUXEMBOURG I (KIRCHBERG) AND II (BERTRANGE)****Ages:** 3-4 to 18+ years**Sections:** English, French, German sections. Between both campuses, there are language sections for all EU27 countries. Both schools follow the European Baccalaureate curriculum.**Fees:** Children of EU Institution employees get free schooling. Private places cost €3,953 to €7,413 per annum depending on age of child.**PRIVATE INTERNATIONAL SCHOOLS (ENGLISH-LANGUAGE)****ST GEORGE'S INTERNATIONAL SCHOOL LUXEMBOURG (HAMM)****Ages:** 3-18+ years**Curriculum:** Following the national curriculum of England and Wales leading to IGCSEs and A levels.**Fees:** €13,910 to €18,350 per annum with a non-refundable application fee of €750.📧 [www.st-georges.lu](http://www.st-georges.lu)**INTERNATIONAL SCHOOL LUXEMBOURG (MERL)****Ages:** 3-18+ years**Curriculum:** Students attain IGCSEs and then the IB.**Fees:** €19,805 to €21,699 per annum and an application fee of €300.📧 [www.islux.lu](http://www.islux.lu)**OVER THE RAINBOW INTERNATIONAL SCHOOL (BELAIR)****Ages:** 3-18+ years**Curriculum:** French and English sections for the IB.**Fees:** €11,515 to €14,710 per annum and a non-refundable registration fee of €300.📧 <https://otrschool.lu/>**HOME-SCHOOLING PRIMARY (4-12 YEARS)**

Send a letter of motivation to the education director for your municipality, which includes your rationale, and why you believe state education cannot provide this. It can include details of your philosophy on education, formal learning, or specific learning. You will receive authorisation which you must take to your municipality or the VdL.

**SECONDARY (12-16+ YEARS)**

You write to your municipality to inform them your child will be home-schooled. You can enrol them in an online programme which leads to a specific qualification, and which will provide specific necessary documentation, or you can defend the right to self-directed schooling to the Ministry of Education.

📧 [www.alliasbl.lu](http://www.alliasbl.lu)

LUXEMBOURG TIMES

# News on the GO



Download the new  
Luxembourg Times App



# LEARNING A LANGUAGE

Where can you learn and practise the country's three official languages – Luxembourgish, French, and German?.

## THE WELCOME & INTEGRATION CONTRACT

**What:** *Contrat d'Accueil et d'Intégration (CAI)* for discounts on language courses, and citizenship classes.

**Who:** 16+ years and not a Luxembourg National

**How:** Via a guidance and information session to decide which of the three languages you want to learn, and a contract that lasts 2 years (but is renewable).

## WHERE TO STUDY?

### INSTITUT NATIONAL DES LANGUES (INL)

Government-recognised courses at teaching centres in Limpertsberg, Belval and Mersch.

### NON-PROFIT ORGANISATIONS

Join classes run by non-profit organisations.

📱 [www.vdl.lu/en/living/education-and-training](http://www.vdl.lu/en/living/education-and-training)

📱 <https://www.maisondafrique.fr/fr/cours-inscriptions/>

📱 <https://www.luxembourgaccueil.lu/activites-linguistiques>

📱 [www.cflh.lu/index.php/fr/](http://www.cflh.lu/index.php/fr/)

📱 <https://www.asti.lu/pratique-de-langues/>

📱 [www.landakademie.lu](http://www.landakademie.lu)

📱 <https://mecasbl.lu/formations/langues/>

📱 <https://moienasbl.lu/en/>

📱 [www.lifelonglearning.lu](http://www.lifelonglearning.lu)



## LOCAL MUNICIPALITY OR SCHOOL

Check if your commune runs evening classes locally or at a secondary school.



## INTENSIVE COURSES

One-to-one tuition or intense tutoring in a small group.

📱 [www.inlingua.lu](http://www.inlingua.lu)

📱 [www.prolingua.lu](http://www.prolingua.lu)

📱 [www.languages.lu](http://www.languages.lu)

## FREE LEARNING TOOLS

For the basics or to practise what you already know.

📱 [www.languagesofluxembourg.lu/](http://www.languagesofluxembourg.lu/)  
(online learning tool)

📱 <https://llo.lu/fr/>

📱 [www.duolingo.com](http://www.duolingo.com)

📱 <https://quattropole.org/>

📱 <https://lod.lu/>

## LANGUAGE CAFES

If you need to practise the language you have learned, try these exchange groups:

- ASTI – regular Wednesday evening sessions at the Dommeldange Cultural Centre.
- Inter-Actions language café at Opderschmelz in Dudelange.
- Club Polyglotte meets Tuesday evenings in the City.
- Luxembourg Accueil has French and Luxembourgish language exchanges for beginners.
- The British Ladies Club and American Women's Club Luxembourg host language practise sessions.





# You are looking for a crèche or day care centre near you?

**Online Pre-registration**

**Available places**

Limpertsberg

Rollingergrund

Kirchberg

Schifflange

Mamer

Dudelange

Leudelange

Niederkorn

Bertrange

Strassen

Tél : 28 80 08 / [rockids.lu](http://rockids.lu)  
[info@rockids.lu](mailto:info@rockids.lu)

# CHILDCARE OPTIONS



What are your options if you need child or wraparound care when you are working?



## PUBLIC & PRIVATE CRÈCHES

*Crèches* are for children aged 4 years or less, and both private and public ones are regulated by the state for education standards. Spaces are limited in both, so put your name on a waiting list early.

- Public *crèches* use Luxembourgish, private ones can use French, English, or German.
- Public *crèches* have set hours, private *crèches* usually have longer hours.
- Priority is given to single parents and children with special needs in public *crèches*.

## DAY NURSERIES

Take children from 2 months to 8 years for a maximum of 16 hours a week. Ideal if you require occasional help or want to transition your child from home to school.

## DAY CENTRES AND MAISONS RELAIS

Day centres take children aged 4 to 12 years (or the end of fundamental education). They are open when schools close and provide lunch plus help with homework. Many open in the school holidays.

*Maisons Relais* help with homework, meals, and supervision for children aged 3 to 12 years and are

often attached to, or located near, a school. They usually open from 7.00 to 19.00 and are operated by local municipalities or charities such as The Red Cross and Caritas.

## NANNIES, AU PAIRS OR HOME HELP

**Nannies** usually have childcare qualifications and can live in or out. **Au pairs** do not need childcare qualifications, and can take on light chores in return for bed and board.

Both are considered full-time if they work 25 hours per week, and you will be responsible for paying their health insurance.



**Au pair** hosting is regulated in Luxembourg and one child must be under 13 years. They cannot work for more than 5 hours per day and 25 hours per week over an average four-week period. Host families will need to send an application to the National Youth Service with supporting documents, and sign an agreement with the au pair which includes duration of stay, hours, housing conditions, days off, and tasks to be performed.

**Au pairs** must take a language course paid for by the host family and be paid an income or receive pocket money that is at least one fifth of the social minimum wage. They must have three eve-

nings and one full rest day per week, plus two additional rest days per month, and be accommodated in a private room.

---

### CHILDMINDERS

This can be day or night care but must be provided by someone who is accredited and is either self-employed or works to an agreement with the family. Childminders cannot care for more than five children (including their own), at any given time. *Dageselteren* provides training and guidance for childminders and parents.

<https://www.arcus.lu/profile/4/agence-dageselteren>

---

### SICK CHILD?

*Krank Kanner Doheem* is a home service for working parents that provides care for sick children. You must register to use their services.

<https://fed.lu/wp/>

---

### FINANCIAL HELP

Childcare for children aged 4 to 12 years during school term time is free, as are school lunches. This does not cover pre-school and is only for the hours 7.00 until 19.00 on working days.

During school holidays parents of children this age, and parents of pre-school or crèche age children can use the *Chèque Ser-*

*vice Accueil (CSA)*, an income-based government subsidy, so long as the childcare chosen is registered with the state. It is paid directly to the childcare provider, and will be deducted from monthly invoices. The amount you receive will depend on the number of children in the family, the income of parents, and the number of hours in non-formal education required per month by each child.





# LEISURE

Life is not all work, so our leisure section is designed to give you a taste of what you can do in your free time.

Finding your go-to coffee place, your favourite bookshop, or gym or yoga studio, is all part of making a new country home.

## EVERYDAY LIFE

We've listed great places for a cosy coffee, where to relax over Sunday brunch, and outdoor markets where you can stock up on organic fruit and vegetables, artisan produce, or antiques and art. If you love books, check out our list of English-language bookshops and libraries, and for the active, we give you the lowdown on gyms and yoga studios.

## CULTURE & MUSEUMS

Culture vultures and history or art lovers will appreciate our guide to museums and galleries, from the Villa Vauban's collection of Dutch Masters, to an interactive science playground, and the country's famous Family of Man photography exhibition.

📖 Library ©unsplash.com, Art Week ©LMIH/Lucaschombart, Ansembourg @LMIH/CP Creatives, Blues & Jazz Rallye ©LMIH/Focalize, Emmanuel Claude

“

**Reviewed Luxembourg,  
decidedly very curious  
& very beautiful**

Victor Hugo, 1862

”



EMMA LARSSON



## DAY TRIPS

If you want to get to know places outside the city, Inside Lux takes you on a whistle-stop tour of some of the most enchanting towns – Vianden, Echternach, Wiltz and Remich. If you love nature and the great outdoors, try one of five interactive family walking trails.

The greater region has some great day-trip destinations. You can hop on a train to several of them, or jump in the car and be at a wolf park or Roman villa in less than one hour.

## A NIGHT OUT

If you need inspiration on where to kick back after work or at weekends, our nightlife guide covers clubbing, cocktails, and comedy nights, plus theatre and live music venues.

For more inspiration, we recommend that you visit the Expat Hub sections on Leisure & Shopping, Dining & Nightlife, Travel, or look at our weekly What's On Guide, for detailed, up-to-the-minute information.



# COFFEE *IN THE CITY*

Get your daily caffeine fix at one of these cosy, eclectic and Fairtrade cafes in the city.



## KAALE KAFFI 9 RUE DE LA BOUCHERIE

Gilded mirrors, velvet armchairs, and artworks on display, you can play a game of chess whilst sipping your coffee.

## T-ZONE BOBA 17 RUE BEAUMONT

The latest trend of Taiwanese bubble tea, complete with tapioca balls. Try traditional black tea or coconut flavour with mango balls, sipped through a bamboo straw.

## READY?! 35 AVENUE DU BOIS

Whitewashed walls, tables made from cable reels, and comfy sofas, this place is popular with students, office workers and mums meeting up.

## CHIQUE-O-LATTE 16 RUE DES BAINS

Coconut latte or caramel iced coffee, this café has warm lighting and green velvet chairs plus a selection of teas including spiced chai.



## CAFÉ LE BOVARY 1 RUE DE LAROCHE

A literary den with funky furniture and plenty of books to browse, you can relax on the sofa or take a table on the quiet terrace.



## CHALON DE THÉ 5 RUE GLESENER

Get up close and personal with the beautiful cats that relax and snooze at this cat café.



## KONRAD CAFÉ RUE DU NORD

Coffee, or something stronger, in this eclectic spot with kitsch 1970s décor, which also hosts acoustic sessions.

## KNOPES COFFEE SHOP 11 AVENUE DE LA PORT-NEUVE

Light, airy, and with wooden stools and sofas, coffee is blended at their on-site workshop.



## INTENSE COFFEE 61 AVENUE PASTEUR

A great location, with streetside tables for people watching, or a private terrace for chatting, you can also buy freshly ground coffee to take home.



# BOOKSHOPS, LIBRARIES AND EXCHANGE SHELVES

Need a new book? Here's a list of bookshops and libraries stocking English-language fiction.

## BOOKSHOPS

### ERNSTER ALL ENGLISH BOOKSTORE | 4 RUE DE LA REINE

Near the Grand Ducal Palace, this is the place to browse best-sellers, the classics, travel guides, young adult fiction, biographies, and history tomes. You can order online, or visit sister bookshops with English-language sections at rue du Fossé in the city, at the Belle Etoile, Cloche d'Or, City Concorde, and Topaze shopping centres, and at Bascharage and Ettelbruck.

### LIBRAIRIE ALINEA 30 RUE DES CAPUCINS

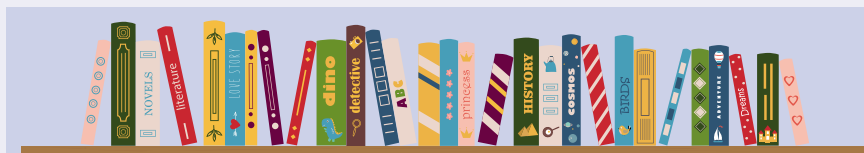
A delightful place with book-filled shelves including literature, graphic novels, kids' books, and some 1,500 English titles. You can order online too.

### LIBRAIRIE DES LYCÉES 30 AVENUE VICTOR HUGO

Stocking school books, but with a selection of literature in English required for schools, so a good place to search for the classics.

### QUAICHLEKER BICHERECK PLACE DU MARCHÉ, ECHTERNACH

Another place with an English section, and a good selection of modern and classical literature.



## BOOK EXCHANGES

- *Bicherschaf* are self-service book kiosks located across the city and in several municipalities. You can take a book, read it, and return it, or leave books in good condition for others to try.
- Café Le Bovary in Weimerskirch has a take a book, leave a book, exchange system.

## LOCAL AUTHORS

- Meet local English-language authors at the annual book fair, the *Walfer Bicherdeeg*, which takes place in November.
- Order books from Black Fountain Press, Luxembourg's publishing house for literature in English, which has several books by locally-based authors.

## LIBRARIES

- National Library of Luxembourg in Kirchberg stocks numerous English titles in physical and e-reader format. The library has a book bus (*Bicherbus*) that visits 81 localities, so you can order a book in advance.
- The City Library on rue Genistre lets you borrow four books and two audio books a month.
- *Il était une fois* is a children's library with books in several languages that organises storytelling sessions.

## BOOKSHOPS

- 📱 <https://www.ernster.com/en/aboutus/stores>
- 📱 <https://www.facebook.com/alinea.librairie/>
- 📱 <https://shopldl.lu/gb/80-novels>
- 📱 <https://bichereck.lu/>
- 📱 [product-category/english/](https://product-category/english/)

## LIBRARIES

- 📱 <https://bnl.public.lu/en.html>
- 📱 <https://bimu.lu/en>
- 📱 <https://www.iletaitunefois.lu/p/0/1>

## LOCAL AUTHORS

- 📱 <https://walfer.lu/bicherdeeg/>
- 📱 <https://www.blackfountain.lu/>

# JOINING A GYM OR YOGA CLASS



If you like to train with weights, body pump, or join a regular fitness or yoga class, we've got you covered.



## MEMBERSHIP

Fees and facilities vary, so think about what ambience you want. Most gyms and yoga studios will give you a free trial, and some offer pay-as-you-go options.

## OUTDOOR GYMS

For a free, alfresco workout in the summer months, try the city's outdoor gyms.

📱 <https://www.vdl.lu/en/visiting/sport-and-leisure/sporting-facilities/outdoor-gym>

## GYM CHAINS

Offering membership to more than one location in Luxembourg or internationally if you're a frequent business traveller.

### BASICFIT

1,250 gyms internationally, 10 in Luxembourg, and a fitness app for training at home. The cheapest gym chain, you can join for a month, or take a premium rate which allows you to bring a friend.

📱 [www.basic-fit.com/en-lu/home](http://www.basic-fit.com/en-lu/home)

### CK FITNESS

Personal trainers can analyse your body composition and build a tailor-made programme. Cardio, muscle-building, Pilates, and indoor cycling classes, plus some sites have a sauna.

📱 [www.ck-fitness.lu/fr](http://www.ck-fitness.lu/fr)

### JIMS

Three locations, the biggest at Gare, they give you an initial fitness and health interview and body scan.

📱 [www.jimsfitness.lu/fr/clubs](http://www.jimsfitness.lu/fr/clubs)

### AURUM

Access to a huge number of machines and weights with gyms at 3 locations. To join you must fill out a questionnaire and meet a personal trainer onsite.

📱 [www.aurum.lu](http://www.aurum.lu)



**Run for  
charity**

Location partner:



# LUXEMBOURG TIMES

www.luxtimes.lu

## businessrun 23



**REGISTER  
NOW!**

**Finish &  
Party at  
d'Coque**

**5 km  
Business  
Run**



**21 SEPTEMBER 2023 | 7 P.M.**

**LUXEMBOURG TIMES**



CHAMBRE DES SALARIÉS  
LUXEMBOURG



MERBAG



**WAGNERTECH**   
ALLES AUS ENGER HAND.

jobs.lu

More info on [www.business-run.lu](http://www.business-run.lu) | Follow us now on



[businessrun.luxemburg](https://www.facebook.com/businessrun.luxemburg)



[@business.run](https://www.instagram.com/business.run)

**LUXFIT**

Three gyms in Luxembourg which have personal trainers at no extra cost, programmes can help reduce and rehabilitate health restrictions, release stress, and help with body shaping or weight loss.

📱 <https://luxfit.com/en/>

**INDIVIDUAL GYMS****MARCUS NEAL FITNESS**

A philosophy of inclusiveness regardless of fitness level, this gym offers HIIT training, Fit-Kids, personal trainers, and classes in yoga and spinergy.

📱 <https://marcusnealfitness.com/>

**FACTORY 4 FITNESS**

A huge gym space offering cardio, free weights, circuits and cross training, and group sessions in Thai boxing, trampoline, body combat, and spinning. It has a wellness area and sauna too.

📱 <https://factory4.lu/>

**PAIN WORLD**

Serious fitness freaks should head here for weight and cardio machines and group lessons. It opens at 5.<sup>00</sup> on weekdays and 7.<sup>00</sup> at weekends.

📱 [www.painworld.lu](http://www.painworld.lu)

**FITNESS ZONE**

Steppers, treadmills, ellipticals, bicycles, and classes for abs, boxing, Zumba, and yoga. Packages include free taster sessions.

📱 [www.fitnesszone.lu](http://www.fitnesszone.lu)

**VITALY FIT**

With a swimming pool, sauna and hammam, this is more than just a gym. It also has yoga and Pilates classes.

📱 [www.vitaly-fit.lu](http://www.vitaly-fit.lu)

**LADYFIT**

Ladies-only gym also catering to pregnant women, and those aged 50 years or more.

📱 <https://ladyfitness.lu/>

**LEISURE CENTRES WITH GYMS**

📱 [www.coque.lu/cours-fitness/le-studio](http://www.coque.lu/cours-fitness/le-studio)

📱 [www.pidal.lu/pidal-fit/decouvrir-le-fitness](http://www.pidal.lu/pidal-fit/decouvrir-le-fitness)

📱 <https://www.vdl.lu/en/visiting/sport-and-leisure/sporting-facilities>

📱 [www.alliasbl.lu](http://www.alliasbl.lu)

**YOGA STUDIOS**

From family yoga and beginner's Yin classes, to advanced hot box Bikram.

**YOGALOFT**

With studios in Kirchberg, Limpertsberg, Gare, Strassen, and outdoor yoga in Merl Park during summer, you can try restorative Yin, Vinyasa, gentle back yoga, hot box and kids or pre-natal mother classes.

📱 [www.yogaloft.lu](http://www.yogaloft.lu)

**YOGA LA SOURCE**

With studios in the city, Kirchberg, Strassen, Bereldange and Walferdange, you can join practitioners for Hatha Ashtanga, Sivananda, Yin, Nidra and classes for lower back, hormones or pregnancy.

📱 [www.yoga.lu/locations](http://www.yoga.lu/locations)

**FNELY**

The National Federation of Luxembourg Yoga Schools (FNELY) has teachers who hold classes in local community and sports centres and town halls. Many speak English.

📱 [www.yoga-federation.lu/enseignants/](http://www.yoga-federation.lu/enseignants/)

**YOGA STUDIOS**

📱 <https://yogabalance.lu/>

📱 [www.hotyoga.lu](http://www.hotyoga.lu)

📱 [www.urbanleafyoga.com](http://www.urbanleafyoga.com)

📱 <http://jivamuktiyogaluxembourg.com/>

📱 [www.iyengaryoga.lu](http://www.iyengaryoga.lu)

📱 [www.aeroyoga.lu/aeroyoga/](http://www.aeroyoga.lu/aeroyoga/)

📱 [www.sarahjohnyoga.com](http://www.sarahjohnyoga.com) (outdoor yoga)

📱 <https://ashtangayoga.lu/classes/>



# A lot of promos, directly in your eyes.



**woodee**  
The best deals are here

Download the app  
and take advantage of the best deals.



# VEGAN & VEGETARIAN CAFES AND BISTROS

There are plenty of vegan and vegetarian options in the city for a lunch, dinner, or coffee and cake.

## BEET

32 PLACE GUILLAUME II

Plant-based and proud, Beet has a beautiful summer terrace and modern bistro chic. Try the jackfruit tacos, various veggie burgers, or the spicy peanut curry. Around the corner at 5 rue Chimay, sister cafe Seed offers light bites, pastry, and coffee.

## HAPP

44 AVENUE JOHN F KENNEDY

Happ has a different menu each day and you can view all the ingredients. Try the warm Mexican bowl, with brown rice, spiced black beans, roasted paprika, and marinated red onion with coriander.

## LOKAAL

29 BOULEVARD PRINCE HENRI

The vegan menu has Bao buns with BBQ mushrooms, carrot and red cabbage, or lentil lasagne. You can try Sunday brunch at their sister establishment Lokaal Charlotte.

## SNACK IN JOY

25 BOULEVARD ROYAL

Perfect 100% vegan comfort food including Chilli sin carne and vegan currywurst. It has a small terrace and wooden tables indoors.



## GREEN OLIVE

75 RUE DE STRASBOURG

Lebanese specialities such as Fat-toush, okra stew, stuffed vine leaves and broccoli pancakes served with beet humus, with a buffet-style mezze option for a big appetite.

## ONDA

43 RUE DE GOETHE

Tucked away in the Gare neighbourhood, you can sample freshly made vegan soups and salads, home-made bread, and desserts.

## GLOW

2 RUE XAVIER DE FELLER

Relax with a book from their free library and a slice of plant-based cake at this café and bakery.

## RAWDISH

PLACE DE PARIS

Try their beetroot, mango, and goji berry hangover cure with a hot or

cold vegan lunch bowl. The house speciality is raw cake, so finish with Sugar Daddy, made with peanut butter, cocoa, and almonds.

## NIRVANA CAFÉ

1 AVENUE DE LA GARE

A social project dedicated to promoting veganism and lactose-free dining, this café dishes up Indian and Pakistani cuisine including curries, samosas and bhajis.

## PURE

3 PARK DRÄI EECHELEN

Located at the MUDAM modern art gallery, you can try poke bowls, soup, or the dish of the day, plus brunch at the weekend.

## BLOOM COFFEE SHOP

101 RUE ADOLPHE FISCHER

Most of the cakes and tarts are gluten-free and vegan. Try pistachio buns or their home-made cinnamon bun, the Kanelbullar.

**luxembourg**  
city tourist office

# LUXEMBOURG CITY UNDERGROUND

**DIVE INTO  
THE DEPTHS  
OF THE CITY**

**Tickets**

[luxembourg-city.com](https://luxembourg-city.com)

Luxembourg City Tourist Office - Place Guillaume II





# SIX PLACES FOR SUNDAY BRUNCH

Sundays were made for leisurely dining at these expert brunch places.



## LA TABLE DU PAIN 19 AVENUE MONTEREY

Sweet or salty brunch options featuring scrambled eggs, muffins, wheat bread, pastries, and hot drinks. A veggie version supplies avocado on toast and pancakes. Good for early risers, it opens at 7.<sup>00</sup> on Sunday.

## EGG 62 RUE DE STRASBOURG

How do you like your eggs? How about eggs Benedict on toasted Bao bread, or Japanese buns stuffed with scrambled eggs. This speciality coffee shop and "eggs-pressario" also serves granola and English tea. Opens at 9.<sup>00</sup>

## BOUNEWEGER STUFF 1 RUE DU CIMETIÈRE

Popular, so book in advance, for a choice of brunch menus from the classic English breakfast to vegetarian or sweet varieties. In summer, bag a table on the sunny terrace. Brunch served from 11.<sup>00</sup> to 15.<sup>00</sup>

## MAMA SHELTER 2 RUE DU FORT NIEDERGRUENEWALD

Head to this Kirchberg establishment for freshly baked tortillas, waffles, and pancakes in all-you-can-eat style, served from 12.<sup>30</sup> to 16.<sup>00</sup>. Kids will be occupied with an animator, table football, and arcade games.

## LOKAAL 29 BOULEVARD GRANDE- DUCHESS CHARLOTTE

A hidden gem with a mostly vegan menu including lentil lasagne, cabbage rolls, or plant-based soups, sandwiches, and pasta. Open for brunch at 11.<sup>00</sup>.

## COME À LA MAISON 70 ROUTE D'ESCH

A buffet of cold cuts, cheese, fruit, pasta and dessert, plus live music, this is a great family brunch spot not far from Merl Park. Opens at 11.<sup>00</sup>.



DISCOVER THE FINEST  
NATURAL MINERAL WATER OF LUXEMBOURG.  
ROSPORT, THE REFERENCE SINCE 1959.

[WWW.ROSPORT.COM](http://WWW.ROSPORT.COM)



# LUXEMBOURG'S MANY MARKETS



Your guide to fresh produce, antique, art, and flea markets across the Grand Duchy.

## IN THE CITY

### STATER MAART PLACE GUILLAUME II

Grab some regional and seasonal produce, organic items, flowers, plants, fish, meat, bread, and craft products every Wednesday and Saturday from 7.<sup>30</sup> until 14.<sup>00</sup>.

### BOUNEWEGER MAART PLACE LÉON XIII

Tuesday afternoons from 16.<sup>00</sup> to 19.<sup>00</sup> you can pick up regional produce such as honey and jam, wine, flowers, and plants.

### GARER MAART PLACE DE PARIS

Head to this renovated square for fruit, vegetables, and plenty of other produce on sale from 7.<sup>30</sup> to 14.<sup>00</sup>, plus the chance to while away a few hours on the terraces of the square's many cafes.

### GLACISMAART CHAMP DU GLACIS

The mother of all markets, bringing together fresh food stalls, second-hand clothing, household items, flowers and plants, and traditional flea market fare. Taking place on the third Sunday of the month from March to



November (except August) from 10.<sup>00</sup> to 17.<sup>00</sup>. There's also a flea market on the first Sunday of the month from April to October.

### ANTIQUE MARKET PLACE D'ARMES

Enjoy live music performances whilst you browse the curios, collectors' items and antiques at this market held every second and fourth Saturday of the month from 8.<sup>00</sup> to 18.<sup>00</sup>.

### MÄERTCHEN PLACE DE LA CONSTITUTION

The Oktav market has its origins in the religious holiday and takes place annually before Pentecost in April/May for 16 days from 11.<sup>00</sup> to 22.<sup>00</sup>. You can buy games and trinkets, and enjoy the fairground rides.

### KONSCHT AM GRUND

Head to the Grund quarter for an art market held on the first Sunday of the month from May to October from 10.<sup>00</sup> to 18.<sup>00</sup>. There are plenty of bars and restaurants to people watch.

## IN THE REGIONS

### First Monday of the month

Niederanven

### Every Tuesday

Diekirch

Esch-sur-Alzette

### Every second Wednesday of the month

Junglinster

Echternach

Hesperange

Bertrange

### Every Thursday

Dudelange

### Every Friday

Ettelbruck

Esch-sur-Alzette

### First and third Friday of the month

Mamer

Leudelange

### Second and fourth Friday of the month

Strassen

Mondorf-les-Bains

### Last Friday of the month

Larochette



# AFFORDABLE ORGANIC PRODUCTS EVERYDAY, FOR EVERYONE!

*Easy as pie!*



Mon-Fri: 8 am - 7 pm Sat: 8 am - 6 pm

  [www.naturata.lu](http://www.naturata.lu)

Dudelange | Erpeldange | Esch-Belval | Howald | Marnach | Merl | Munsbach | Rollingen/Mersch | Rollingergrund | Windhof

# NIGHTLIFE

Want to catch an international rock band, see some stand-up comedy, enjoy the opera, ballet, a theatre performance, watch a blockbuster or an arthouse movie, or dance the night away?



## LIVE MUSIC VENUES

If you want to see headline acts then **Rockhal** in the south or **Den Atelier** in the city are the places to go – both also organise open-air concerts. This summer saw Arctic Monkeys and Robbie Williams perform, but there's still time to catch Ellie Goulding, 5 Seconds of Summer, and Sting.

**Neimënster Cultural Centre** is the place to go for folk, jazz, and blues. It's home to the RESET Jazz Festival, Siren's Call, and numerous open-air concerts including Kraftwerk and George Ezra in this year's line-up. For something more intimate, **Rotondes**, housed in the former railway workshop in Bonnevoie, saw an acoustic concert by rising star, Beabadoobee. Both venues also host theatre and performance art.

**KulturFabrik** in Esch-sur-Alzette is housed in a former slaughterhouse now adorned in urban art, and hosts club nights, festivals, and plenty of local talent from the greater region. For up-and-coming acts head to **De Gudde Wëllen** in the city, which hosts indie-folk, post punk and alt rock groups.

**Opderschmelz** in Dudelange stages the annual Zeltik festival and will see Dexys (Midnight Runners) performing in October.

📱 [www.denatelier.lu](http://www.denatelier.lu)

📱 [www.rockhal.lu](http://www.rockhal.lu)

📱 [www.neimenster.lu](http://www.neimenster.lu)

📱 [www.rotondes.lu](http://www.rotondes.lu)

📱 [www.kulturfabrik.lu](http://www.kulturfabrik.lu)

📱 [www.degudewellen.lu](http://www.degudewellen.lu)

📱 [www.opderschmelz.lu](http://www.opderschmelz.lu)

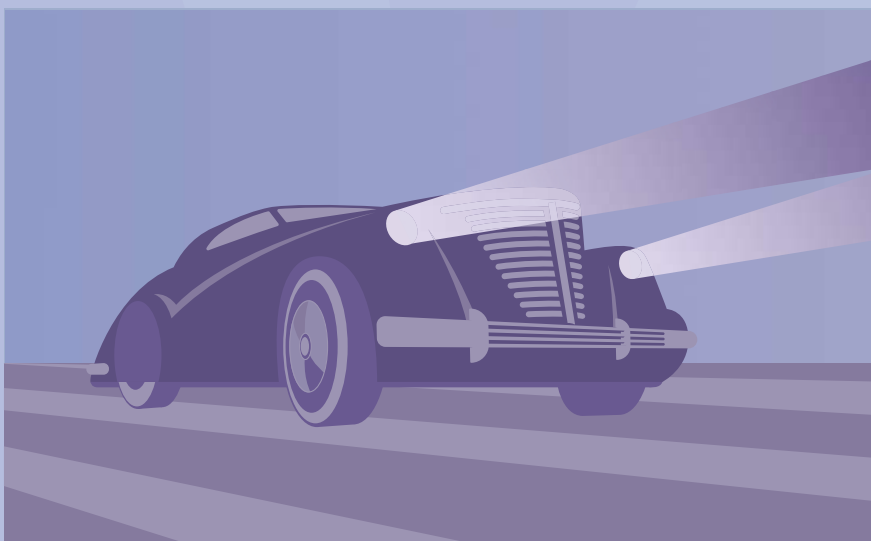
## STAND UP COMEDY

Catch international stand-up comedy shows or local talent at an open mic night. Comedy nights in English are organised by Luxembourg Laughing Out Loud (LLOL) and Luxembourg Comedy at various bars, night-clubs, restaurants, and other venues. Women-only stand ups take to the stage twice a month with Frilly Curtains.

📱 [www.facebook.com/LLOL.LuxembourgLaughingOutLoud](https://www.facebook.com/LLOL.LuxembourgLaughingOutLoud)  
[www.facebook.com/luxembourgcomedy](https://www.facebook.com/luxembourgcomedy)

📱 [www.instagram.com/frillycurtainscomedy/](https://www.instagram.com/frillycurtainscomedy/)





## CINEMA

For multi-screen cinemas showing the latest releases in 4DX head to **Kinepolis** in Kirchberg or Belval. You can catch arthouse and independent cinema at **Ciné Utopia**, and classic films at **Ciné-mathèque** in the city. Attend the annual British and Irish Film Festival, CinEast for Central and Eastern European films, and the Luxembourg Film Festival for the best of local talent. In summer, Glacis is home to a drive-in cinema whilst the city hosts an open-air cinema.

## THEATRE

For international touring performances including opera, musicals, dance, and drama, the **Grand Théâtre** has a large auditorium and a smaller studio. The **Théâtre des Capucins** in the old town is a smaller venue showing cutting edge performances. You'll get locally produced performances at the **Théâtre National du Luxembourg**, **Mierscher Kulturhaus** and **Kinnekssbond**.

📄 [www.theatres.lu](http://www.theatres.lu)

📄 [www.tnl.lu](http://www.tnl.lu)

📄 [www.mierscherkulturhaus.lu](http://www.mierscherkulturhaus.lu)

📄 [www.kinnekssbond.lu](http://www.kinnekssbond.lu)

## DANCING

If clubbing is your scene, head to **Melusina**, located by the river and arranged over two floors. Located in an underground cellar with vaulted stone ceilings, **Apoteca** is London nightclub meets LA wine bar. Sushi restaurant **IKKI** in Clausen clears the decks for dancing at weekends, as does **Hitch** burger bar in Limpertsberg. The most glamorous setting is **Gotham**, with a dance floor framed by VIP tables. Techno-lovers should head to **Ground**, which also hosts LGBTIQ+ evenings, whilst if you prefer the late night bar try **Scott's Bar** in Grund.

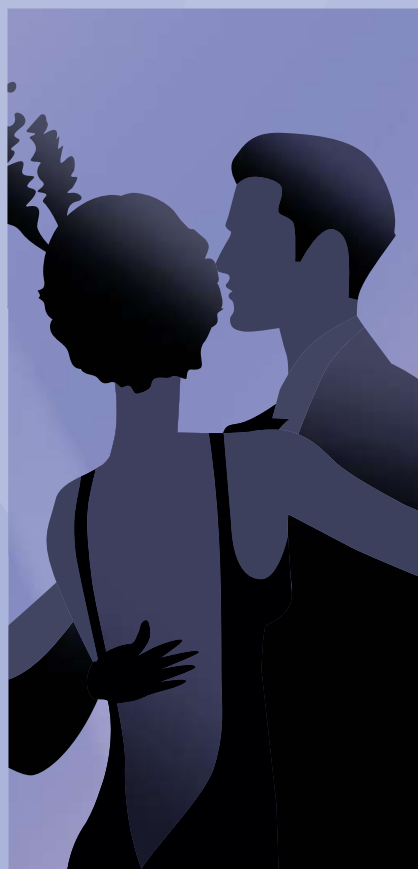


## FANCY A COCKTAIL?

If you like your drink with an umbrella, head to a former pharmacy on Grand Rue, now home to **Shinzo**, which has a central square bar surrounded by velvet bar stools. The **Piano Bar** has a classy lounge area and signature cocktails like the Umami Sour, whilst **Madame Jeanette** mixes Mojitos and Mezcal Sours with tapas.

Small venue **Bar:Bar**, in the heart of the city, is big on ambience, and creates its own bespoke cocktails. **The Observatory bar** at Sofitel Le Grand Ducal has a unique view of the city's skyline at night plus designer cocktails.

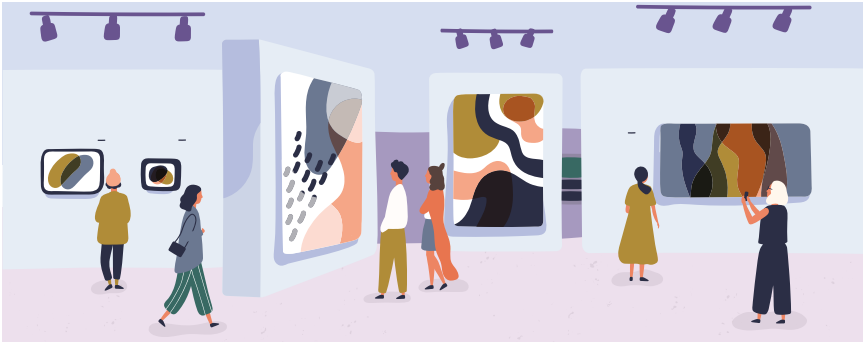
Latin American themed **Maya** puts an emphasis on tequila, mezcal, and pisco cocktails, whilst **BAC** in Pfaffenthal uses ingredients sourced only in Luxembourg, including the alcohol.





# MUSEUMS & GALLERIES

Art lovers, culture-vultures, history buffs and anyone wanting to explore science and nature, will appreciate the country's main museums and galleries.



## ART

### NATIONAL MUSEUM OF HISTORY & ART

Starting in the Middle Ages, and ending in the modern day, this museum houses European paintings, sculpture and photographs, and a decorative arts section including clocks, ceramics, silverware, and art deco works. You can also take a thematic tour from the bronze and iron ages to Gallo-Roman times, showing various artefacts unearthed across the Grand Duchy.

📱 [www.nationalmusee.lu/en/](http://www.nationalmusee.lu/en/)

### FAMILY OF MAN

Housed in Clervaux castle, this permanent exhibition of 500 photos by 273 artists from 68 countries was compiled by Edward Steichen as a post-war manifesto for peace, and given to Luxembourg by New York's MOMA.

📱 [www.steichencollections-cna.lu](http://www.steichencollections-cna.lu)

### VILLA VAUBAN

The city's contemporary art museum has Dutch Masters from the 17<sup>th</sup> century Golden Age, and 19<sup>th</sup> century French historical and landscape paintings, in addition to sculptures and temporary exhibits, which recently included the works of Constable on loan from the UK.

📱 [www.villavauban.lu/](http://www.villavauban.lu/)

### MUDAM

Housed in an award-winning, glass-topped creation, designed by architect I.M. Pei, this gallery has permanent and temporary exhibitions reflecting current artistic trends.

📱 [www.mudam.lu](http://www.mudam.lu)

### CASINO LUXEMBOURG

More contemporary art exhibitions, with a focus on younger, international artists. There are guided tours on Thursday and Sunday.

📱 [www.casino-luxembourg.lu](http://www.casino-luxembourg.lu)

## HISTORY

### LUXEMBOURG CITY MUSEUM

This permanent collection, located in the heart of the old town, illustrates the history of the capital over the past 1,000 years. You can take a guided tour with Count Siegfried or discover history with magic backpacks.

📱 [www.citymuseum.lu](http://www.citymuseum.lu)

### NATIONAL MUSEUM OF MILITARY HISTORY

Telling the story of the Battle of the Bulge from 1944-5 with life-sized models and real equipment, this Diekirch museum details the struggles faced by soldiers and civilians. There are sections on the Luxembourg Army, both World Wars, and the Korean War, plus military vehicles, photographs, and personal memorabilia.

📱 [www.mnhm.net/mnhm/](http://www.mnhm.net/mnhm/)

### MUSEUM DRÄI EECHELEN

A unique fortress on the Kirchberg plateau, known as the Three Acorns, you can travel back in time to meet the fascinating characters that shaped 500 years of Luxembourg's history.

📱 [www.m3e.public.lu/fr.html](http://www.m3e.public.lu/fr.html)



**Philharmonie  
Luxembourg**

# intim//dating

**is that back-to-school feeling  
after a long summer holiday**  
**Find your escape at the Philharmonie**



Ibrahim Maalouf  
Performing live on 9th December 2023



**Mercedes-Benz**



GOUVERNEMENT  
DU GRAND-DUCHÉ DE LUXEMBOURG  
Ministère de la Culture

### TRAMWAYS & BUS MUSEUM

Tucked away in Hollerich, you can climb aboard a horse-drawn tram or an old-fashioned bus. Bringing to life the transport of yesteryear, this museum has 22 scale models and several tramway motor coaches.

📱 [www.vdl.lu/fr/visiter/art-et-culture/lieux-culturels/musees-et-lieux-dexposition](http://www.vdl.lu/fr/visiter/art-et-culture/lieux-culturels/musees-et-lieux-dexposition)

### MUSEUM "A POSSEN"

Immerse yourself in the daily life of 18-19<sup>th</sup> century wine makers, reflecting the living quarters found in the Moselle during this period. Discover folklore, vintage toys, and a shoemaking workshop, cooperage, and weaving area.

📱 [www.musee-possen.lu](http://www.musee-possen.lu)

### MUSEUM OF THE ARDENNES COUNTER-OFFENSIVE

Lasting two months, and the biggest battle of the Second World War, it freed Luxembourg from German occupation. You can see uniforms, weapons, and historic documents housed now in Clervaux castle.

📱 [www.visit-clervaux.lu](http://www.visit-clervaux.lu)

### CASTLE REPLICA EXHIBITION

Gaze at scale models of Luxembourg's many castles and travel through time to see the living quarters, commercial purposes, and defence strategies of each of them.

📱 [www.visit-clervaux.lu](http://www.visit-clervaux.lu)

### EUROPEAN MUSEUM SCHENGEN

A symbol of freedom of movement and the abolition of borders in Europe, at the location this historic treaty was signed. The museum takes you through the history and significance of the Schengen Agreement in developing a more unified Europe.

📱 [www.visitschengen.lu](http://www.visitschengen.lu)

## SCIENCE & NATURE

### NATURAL HISTORY MUSEUM

Discover how our planet was formed, marvel at insect and animal specimens, or join the biennial Science Festival to try hundreds of hands-on experiments. Set across ten permanent exhibition rooms that bring natural history to life.

📱 [www.mnhn.lu](http://www.mnhn.lu)

### LUXEMBOURG SCIENCE CENTER

An interactive science playground with 60 different hands-on science stations including a Faraday cage, a 3D printer, and table football where you compete with a robot. Tickets include daily thematic science shows.

📱 [www.science-center.lu](http://www.science-center.lu)

### PARK SËNNESRÄICH

Use your five senses to see, touch, smell, hear, and taste at this fun centre with indoor and outdoor stations including a giant air cushion and a labyrinth.

📱 [www.sennesraich.lu](http://www.sennesraich.lu)

### BIODIVERSUM

Learn interactively about the flora and fauna of the Haff Réimech Nature Reserve, at this lakeside museum with an underwater exhibit. Afterwards you can take a dip in the lakes or head off on a short walking circuit around the reserve.

📱 [www.environnement.public.lu/fr/natur-erliewen](http://www.environnement.public.lu/fr/natur-erliewen)

### BERDORF AQUA TOWER

Find out how we used water in days gone by and its importance in our lives today, at this interactive museum set in a 55m high water tower, with splendid views at sunset.

📱 [www.aquatower-berdorf.lu/en](http://www.aquatower-berdorf.lu/en)

### TUDOR MUSEUM

Learn how electricity affected the quality of life in the 19<sup>th</sup> century, and generate your own using a bicycle. This museum at Rosport Castle looks at Henri Tudor's work on street lighting and to advance agriculture and transport.

📱 [www.musee-tudor.lu](http://www.musee-tudor.lu)

From 5 to 8 October 2023

**HOME**  
[ E X P O ]



Semaine Nationale  
du Logement



[ [home-expo.lu](https://home-expo.lu) ]



LE GOUVERNEMENT  
DU GRAND-DUCHÉ DE LUXEMBOURG  
Ministère du Logement

 [logement.lu](https://logement.lu)

**CHAMBER  
OF COMMERCE  
LUXEMBOURG**

**M CHAMBRE  
DES MÉTIERS  
LUXEMBOURG**

# INSIDE LUXEMBOURG

Historic castles and cobbled streets, beautiful gorges and waterways, the Grand Duchy has plenty of sights within its borders including these four towns.



## VIANDEN

A fairy tale castle overlooks the cobbled streets of this artisan town. Home to the Counts of Vianden, the castle was built between the 11<sup>th</sup> and 14<sup>th</sup> centuries on the foundations of a Roman fort, and is defended by strong fortifications. You can reach the castle in summer via a panoramic chairlift to the hillside opposite, and visit its armoury, the Knight's Hall, and chapel.

Walk the ramparts on a cultural trail with information panels, and pass by the Gothic vaulted Trinitarian church and the Church of Saint Nicolas, once ministered by the Templars. Then head to the Vianden City Museum for a 1,000 year journey from the Celts to the present day, with a section dedicated to the Luxembourgish poet Edmond de la Fontaine.

Visit the house where exiled French author and poet Victor Hugo stayed in the 19<sup>th</sup> century, and peruse his letters, and drawings. The town's main bridge has a bust of Hugo created by Rodin. Come during the Nut Fair in October to try nut schnapps, or for the Medieval Festival with combat re-enactments, in the summer months.





## ECHTERNACH

Best known for its Benedictine Abbey, founded in the 7<sup>th</sup> century by Saint Willibrord, this cobble-stoned medieval town lies at the edge of the beautiful Mullerthal region.

The Museum of the Abbey contains the gold-leaf pages of the Codex Aureus of Echternach produced at the scriptorium that operated from the 8<sup>th</sup>-11<sup>th</sup> centuries. Echternach was also a Roman trading post and you can visit the restored ruins of a Roman villa located by the lake.

A 15<sup>th</sup> century Gothic town-house, the Hifhof, contains a pre-history museum, and adjacent to it, you'll find the Church of Saints Paul and Peter, which has a Celtic stone sculpture and contains restored frescoes.

The Via Epternacensis is a 15-stage circuit that follows the former town walls and five preserved towers on a tour of the town, or you can take the 5.4km circular trail to the Wolf Gorge, winding through rock-formed narrow passageways. The lake is a lovely place to relax with sporting activities and a swimming area open in summer.

## REMICH

This town on the banks of the Moselle is the ideal spot for a boat trip, a cultural walking tour, or a visit to the nearby wetlands reserve. Originally a Roman settlement, Remich was fortified in the Middle Ages, and you can still see the remains of the 12<sup>th</sup> century fortress watchtower, now part of the parish church.

*The Maacher Gaass* alleyway invites you to step back in time to the 18<sup>th</sup> century, whilst the Bacchus fountain created by local sculptor Will Lofy, celebrates the Remich wine festival where a Riesling Queen is crowned every October.

The visitor centre was created by Luxembourg's most famous architect, François Valentiny, and designed to look like a boat moored on the banks of the Moselle. From nearby you can hop aboard the *MS Princesse Marie-Astrid* for a trip to Schengen, dining on a three-course meal.

Walk through vineyards and past pretty villages using the Lauschtour app for a free audio guide, or rent bikes to cycle to the nearby spa town of Mondorf-les-Bains. You can also visit the *Haff Réimech Nature Reserve*, the largest wetland in the country with 30 ponds that provide a unique habitat for 250 bird species. There you can visit the Biodiversum which has interactive displays on local flora and fauna.



## WILTZ

In the heart of the Ardennes, Wiltz was a Celtic settlement in 764AD, but is now divided into an upper town, home to its castle, and a lower one in the valley.

The Battle of the Bulge destroyed 80% of the town's houses, and its citizens held a general strike against enforced conscription into the German army in 1942, leading to several executions. The town has a strike monument with sculptures created by Luxembourgish artist Lucien Wercollier. The castle contains a museum on the battle, and exhibitions on the region's brewing and tanning industry.

You can take one of two circular walks to take in the town's sights, including the Jardin de Wiltz, the One Penny Monument dedicated to Baden Powell's scouting movement, the Niederwiltzer windmill and one of the country's few remaining justice crosses.

# DAY TRIPS BY TRAIN



## CLERVAUX, LUXEMBOURG

**Journey time:** 1 hour

### What can I see and do?

Clervaux castle is home to three museums. The Family of Man is Edward Steichen's post-war manifesto for peace with 500 photographs by 273 artists from 68 countries. You can also visit an exhibition on the Ardennes counter-offensive of the Second World War, and another featuring models of the country's castles. Lunch at the terraces on Princess Maria Teresa square, then hike up to the Abbey Saint Maurice to hear the monks chanting.



## TRIER, GERMANY

**Journey time:** 50 minutes

### What can I see and do?

Discover the restored Roman ruins, including the Porta Nigra, an amphitheatre, and imperial baths, and visit the impressive Saint Peter's Cathedral. This bustling city has plenty of cafes and restaurants, and you can visit a museum on the city, and another dedicated to toys.



## VOLKINGEN, GERMANY

**Journey time:** 2 hours

*(change at Trier)*

### What can I see and do?

A former ironworks that's now a World Cultural Heritage site where you can tour via a coal track across 7km of signposted walkways. Visit the Science Centre Ferrodrom which has interactive stations on fire, earth, water and air, and the art gallery that houses international exhibitions.



## VIELSALM, BELGIUM

**Journey time:** 90 minutes

### What can I see and do?

Learn about the witches of Vielsalm at *La Maison du Pays de Salm*, an interactive museum, then take the 4.5km Witches Walk. The Bulge Relics Museum contains the remnants of this Ardennes offensive in display cases of photos, documents, artillery, and old vehicles, showing the daily life of soldiers and civilians.

## METZ, FRANCE

**Journey time:** 40-50 minutes

### What can I see and do?

Famous for its spectacular Gothic cathedral, Metz is also home to the Pompidou Centre, an art and archaeology museum, and botanical gardens. You'll find plenty of squares lined with restaurants and bars.

# ALPINE



book  
a test drive



## découvrez votre future Alpine A110

en exclusivité dans vos Centres Alpine Luxembourg et Diekirch

*\*Alpine A110 S Enstone Edition*



# ONE HOUR *BY CAR*

Explore the greater region on these short jaunts, just one hour by car.

## BELGIUM

### BOUILLON CHATEAU-FORT

– nestled on a bend in the River Semois, children will delight in the castle's narrow passageways, as they learn about the Godefroy family, and enjoy the falconry displays.



**ORVAL ABBEY** – audio guides will take you through this famous Cistercian abbey's history to the present day, which includes a herb garden and medicine museum. And you can take home a crate of the monks' famous beer.

## FRANCE

**FORT HACKENBERG** – follow in Winston Churchill's footsteps on a guided tour in English around the largest fort on the Maginot Line at Veckring. Ride a historical electrical train and witness the operation of a 135mm howitzer gun turret.

**RODEMACK TO MANDEREN** – start at the wonderful walled village of Rodemack, then head to Sierck-les-Bains to visit the Castle of the Dukes of Lorraine. Built between the 11<sup>th</sup> and 12<sup>th</sup> centuries, you can take a torchlight tour and play medieval games. Finish your loop of castles with *Chateau de Malbrouck*, which houses temporary exhibitions of famous French comic strips.



## GERMANY



**WOLFPARK WERNER-FREUND** – walk amongst the enclosures of Arctic, American and European wolf packs in the forests at Merzig, where pups are born each year. Open daily, you can follow the 10km wolf trail.

**ROSCHIEDER HOF OPEN AIR MUSEUM** – head to Konz to sample traditional life at the turn of the 20<sup>th</sup> century, including a classroom from 1912, a grocer and a village pub. You can follow corn on its journey to becoming bread, and discover the history of local wine-making.

**VILLA RUSTICA** – meet the Romans and uncover what life was like for those who lived in the Saar-Lor-Lux region 2,000 years ago at this reconstructed villa at Pearl-Borg. Dress up as a Roman, sample dishes from those times at the local tavern, and see what it was like to get clean in a four-stage bath.



# Polestar 2

Up to 654 km range



WLTP: 14.8-17.2 kWh/100 km and CO<sub>2</sub>: 0 g/km.

Specifications may vary according to configuration. All figures are provisional and subject to final certification. Environmental information (A.R. 19/3/2004): [polestar.com](https://www.polestar.com)



Book your test drive  
Polestar Luxembourg, Cloche d'Or

# FIVE FAMILY NATURE TRAILS

Family themed walks to try out, and a quick guide to wheelchair accessible walks in nature.



## 1. INTERACTIVE TRAIL

**Where:** Dudelange | **Length:** 1.5km

Jump like a fox, and find your balance on this short forest trail which also attests to the town's cinema history. Located in *Parc Le'h*, the trail ends in a maze and there is a treetop climbing centre nearby, and a barefoot sensory park with 19 stations where you can squelch your toes on various natural pathways.



## 2. CHARLY RAILWAY PATH

**Where:** Bech | **Length:** 5.5km

Follow the former narrow-gauge railway "Charly" passing 13 different stations where you can make a call on a tree telephone, wash clothes in the river like grandma, and inspect an insect hotel.



## 3. KLANGWEE SONOROUS TRAIL

**Where:** Hoscheid | **Length:** 6.5km

Hear the grass whisper and the trees sing on this trail about music and nature. You can try out natural sound-makers such as stone, wood, and water, across 17 stations that include interactive sculptures created by an artist and a music teacher. Steep in places, and taking 3 hours to complete, it's not for very young children.



## 4. PLANET TRAIL

**Where:** Schiffange | **Length:** 4km

Take a planetary journey in the heart of the former-mining, Red Rock region. Taking 1.5 hours, you journey around the solar system discovering classic mythology at several stations starting with the sun, and then each planet depending on its distance from it.



## 5. MIRADOR EDUCATION TRAIL

**Where:** Steinfort | **Length:** 13km

Pass wooden sculptures of giant newts until you reach a pond filled with real ones together with natterjack toads, in the Schwaarzenhaff Reserve, one of the last natural shelters for this species of toad.



## WHEELCHAIR ACCESSIBLE PATHS

- 4km circular family path in Nospelt starts at the village church.
- 2.2km historical urban trail in Ettelbruck that takes in the town's sights.
- 1.5km barrier-free trail with information panels on the forest in Mullerthal.
- 2.2km Liichte Wee runs from Tétange, taking in Ouerbett Park, with disabled parking spots and toilets.



# Why

Luxembourg

**Discover and understand Luxembourg.**



Publication  
date:  
**November,  
15<sup>th</sup> 2023**

In association with

**LUXEMBOURG TIMES**

**A M C H A M LUXEMBOURG**  
AMERICAN CHAMBER OF COMMERCE IN LUXEMBOURG A.S.B.L.

**Why Luxembourg** is a guide to discover and understand why Luxembourg is the first choice to develop your business.

Why Luxembourg is an 84-page guide written by experts, featuring statistics, infographics, interviews with well-known personalities and analysis. It provides an accurate, concise, practical and complete overview of Luxembourg.

**Book your ad now. Find all the information you need on [www.regie.lu](http://www.regie.lu).**

# LUXEMBOURG CITY

## UNDERGROUND

Explore the city's underground network of tunnels at the Bock and Pétrusse Casemates.

The city's strategic importance spans several centuries, and with independence came the need to dismantle many of its envied fortifications, but the history of Luxembourg lies beneath in the casemates of the Pétrusse and Bock.

These complex and extensive networks of defence tunnels were not built until well after the first stronghold was erected by Count Siegfried in the 10<sup>th</sup> century. Over the years, this was extended and fortified by military engineers, whilst in the hands of the Holy Roman Empire, the House of Burgundy, The Habsburgs, and French and Spanish kings, and finally the Prussians.

The first casemates, or underground tunnels, were built in 1644 under Spanish rule. French military engineer Vauban's command some forty years later, saw the 23km tunnels enlarged. They were extended yet again by the Austrians in the mid-18<sup>th</sup> century.

Subterranean defensive passages were placed on different levels, some going as deep as 40 metres. They were capable of sheltering thousands of soldiers, their equipment, and horses. Spread

over several levels, the tunnels at one time housed fifty cannon and a garrison of 1,200 soldiers. Despite being named the "Gibraltar of the North" due to its impressive fortifications, the fortress was evacuated and dismantled as part of the Treaty of London in 1867, which called for Luxembourg to be permanently neutral.

It took 16 years for the fortifications to be disassembled, and the casemates were reduced to just 17km of tunnels. So essential are they to the foundations of the city, they can never be destroyed without causing damage to the urban fabric.

The tunnels' life did not end however. During the two world wars the Bock Casemates and those of the Pétrusse valley were able to shelter up to 35,000 people in the event of bombardment. They have also served as kitchens, bakeries, and slaughterhouses.

Today this unusual underground feature is part of the city's UNESCO World Heritage Sites. They afford outstanding views of the Grund valley, Neimënster Abbey, and the remains of Vauban's fort.





### THE BOCK CASEMATES

Visit this defensive network dug into the promontory which includes an archaeological crypt, an antechamber and at the entrance, scale models that tell the story of the Grand Duchy which began on the Bock cliff with Count Siegfried. Built by the Austrians in 1745, they have been visited through the centuries by Emperor Joseph II of Austria, Napoleon I, Prince Henry of the Netherlands, and the Grand Duchess Charlotte of Luxembourg.

Open daily, you can take a self-guided visit from 10.00 to 17.00, with entry every 15 minutes for a maximum of 25 people. Entry located at Montée de Clausen.

### THE PÉTRUSSE CASEMATES

The Spanish modernised the original medieval fortress by building large fortifications such as the Beck, the site of today's Place de la Constitution. The remains of the half-moon shaped defensive structure known as the Ravelin du Pâté (still visible today) was built to reinforce the Beck bastion. Vauban gave them their current form, and in the 1746 the Austrians built the current casemates, known as the Batterie de la Pétrusse.

After the Treaty of London, the casemates were used as shooting ranges, and in the 1890s mushroom rooms were grown in the Pastetchen section. As the 20<sup>th</sup> century dawned, the tunnels were the site for concerts and bazaars, and used by a wine merchant to store wine and champagne bottles.

Today the tunnels reveal cutting-edge scenography and light installations to bring history to life. Tours in English are held daily at 15.00 from Monday to Saturday and at 14.30 on Sunday. Entry located at Place de la Constitution.

# DISCOVER THE CITY BY FOOT

Take a walking tour of the city to discover the main sights or book a personal guide to bring the capital's colourful history and architecture to life.



## WENZEL CIRCULAR WALK

Travel through a thousand years of the Grand Duchy's history through the oldest quarters of the city. View the valleys from the top of the Bock Promontory, a rocky ledge surrounded on three sides by the Alzette valley, where Count Siegfried built his castle in 963.

Stop at the Bock Casemates to enter the tunnel network used to defend the strategic fort, for some spectacular views over the Grund. From here you can travel the Chemin de la Corniche, described as Europe's most beautiful balcony, which runs along the ramparts built by the

French and Spanish invaders in the 17<sup>th</sup> century, until you reach the Holy Ghost Citadel.

Visit a former Benedictine abbey now Neimënster Cultural Centre, in what was once the artisan district, before ascending to Vauban's military fortifications for views of the Saint Esprit Plateau.

The Wenzel wall was named after Wenceslas II, the Duke of Luxembourg from 1383 to 1419, under whose reign the wall was built to protect the inhabitants of the city.

### Download the guide:

📄 <https://www.luxembourg-city.com/en/place/tour/wenzel-circular-walk>

## CITY PROMENADE

From the city's fortress to some of its hidden gems, this walking tour passes the Grand Ducal Palace, and Bock Promontory, in addition to the Chemin de la Corniche. You'll also visit the city's main squares such as Place d'Armes, Place de la Constitution, and Place Guillaume II, and take a trip down the valley into Grund where you can finish with refreshments at one of the bars or restaurants. You can also walk this as a guided tour at night.

### Download the guide:

📄 <https://www.luxembourg-city.com/en/place/tour/city-promenade>

# CLERVAUX

IN THE NORTH of the Grand-Duchy of Luxembourg



Photos: ©Vincent Frasiak / @TheRoadAbroad



People ▪ Traditions ▪ History ▪ Exhibitions  
Photography ▪ Nature ▪ Wellness ▪ Hiking



## CLERVAUX CITÉ DE L'IMAGE



SAISON 2022 – 2023

6 EXHIBITIONS ALL YEAR LONG  
CLERVAUX, LUXEMBOURG  
[WWW.CLERVAUXIMAGE.LU](http://WWW.CLERVAUXIMAGE.LU)



LE GOUVERNEMENT  
DU GRAND-DUCHÉ DE LUXEMBOURG  
Ministère de l'Agriculture, de la Viticulture  
et du Développement rural



MARC  
SCHROEDER

JEANNINE  
UNSEN

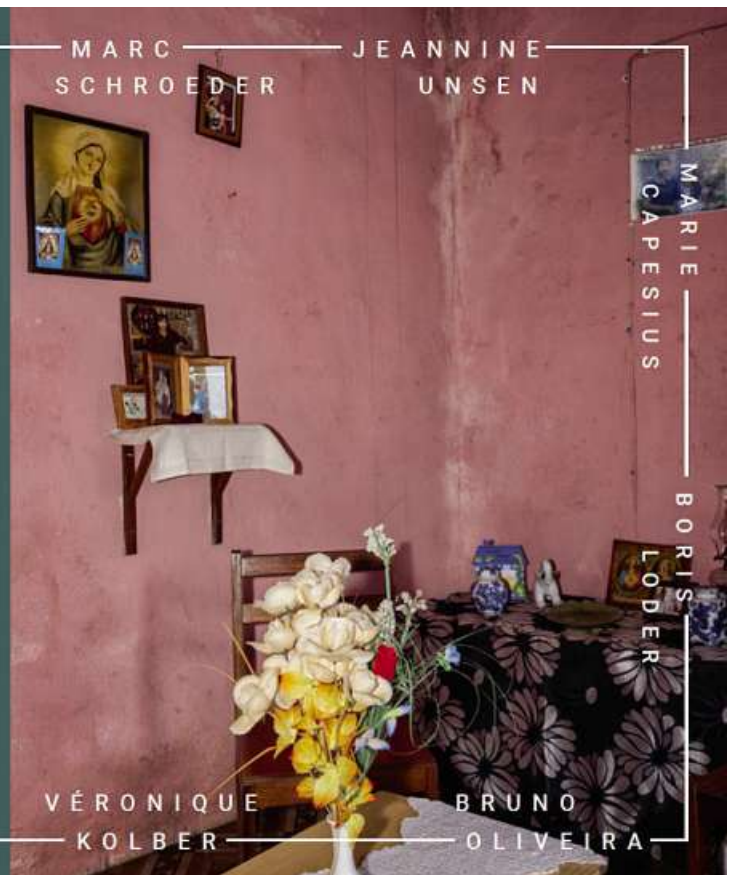
MARIE  
CAPESIUS

BORIS  
LODER

VÉRONIQUE  
KOLBER

BRUNO  
OLIVEIRA

Casa cor de rosa, de la série Coentro e Cachorros, 2018 © Bruno Oliveira



## TOP CITY VIEWS

Luxembourg is instantly Instagrammable not least because of its picture postcard panoramic views. Enjoy them on the Chemin de la Corniche, at Bastion Beck under the gaze of the Golden Lady statue, and in the Justice quarter. A ride in the panoramic glass lift will take you to the Pfaffenthal district. Walk the short distance to Rives de Clausen for lunch or dinner on one of the sunny terraces.

### Download the guide:

📱 <https://www.luxembourg-city.com/en/place/tour/top-city-views>

- Bring the legends and history to life with a personal tour guide:  
✉ [guides@lcto.lu](mailto:guides@lcto.lu)
- Discover the many walking tours organised by the tourist office:  
📱 <https://www.luxembourg-city.com/en/tours>
- Find out what's on in the city:  
📱 <https://www.luxembourg-city.com/en/what-s-on>

## FOR THE KIDS

Two family walks that bring history to life.

### CITY PROMENADE FOR KIDS

Join Count Siegfried and his mermaid wife Melusina on a scavenger hunt around the city, learning the watery legend of Melusina and the capital's history. As you visit the various city squares and sights, you can answer questions to crack the code and get a reward from the city's tourist office. Then head to the pirate ship playground to cool off in the water play area.

### Download the guide:

📱 <https://www.luxembourg-city.com/en/place/tour/city-promenade-for-kids>

### CITY SAFARI FAMILY TOUR

Find the various animals hidden around Luxembourg's old town including William II's horse, the two lions that guard City Hall, a lizard, and a unicorn, on this family circuit. You can combine it with a trip to the Natural History Museum in Grund to see more animals from the region such as the lynx.

### Guided tour only:

📱 <https://www.luxembourg-city.com/en/place/tour/city-safari-family-tour>

## TWO OR FOUR WHEELS?

### UNESCO BIKE TOUR

Hop on an e-bike and use a specially-tailored app that provides images, texts and audios on an interactive map that will take you to all the UNESCO World Heritage Sites in the capital. Each bike is equipped with a phone holder on the handlebars, and uses the Sightseeing.lu app which you can download to your smartphone.

📱 <https://www.luxembourg-city.com/en/place/tour/unesco-e-bike-tour>

### PÉTRUSSE EXPRESS

If you prefer to ride past the sights, board the Pétrusse Express mini train for a tour of the capital, daily from the end of March to early November. It passes the seven museums and galleries of the capital so you can step off to enjoy these with a combined Museum Pass. On board, you can select from several languages including English.

📱 <https://www.luxembourg-city.com/en/place/tour/tour-petrusse-express-66>

# NATURE & PARKS IN THE CITY

Relax in nature or enjoy some family fun in the many parks and playgrounds that make up the green lung of Luxembourg City.

Covering more than 5,000 hectares, the city's first park was created by French landscape artist Edouard André in the 1870s, and is still one of the main municipal parks. André's son went on to develop the Pétrusse park which separates the old town from the railway station district.

## BAN DE GASPERICH PARK

The city's newest and largest park extends over 16.6 hectares and opened in June 2023. A mixture of lawns, dry grasslands, marshy areas and alluvial forest, the park is a vital homeland for local flora and fauna, including native maple and beech trees, and hornbeams.

A *brasserie* is planned, and recreational spaces can host events and concerts. Joggers and walkers enjoy a 4km long network of branching paths that surround a large pond, whilst children love the playgrounds, and everyone can make use of the multi-sports pitch, beach volleyball and *pétanque* courts.

## KLOSEGRÄNNCHEN ARBORETUM AND KIRCHBERG PARK

Despite being the main business district, a green ribbon has been created on the Kirchberg Plateau. The public park is perfect for a lunchtime stroll, a game of *pétanque*, a picnic or to explore some outdoor sculptures. Behind the Robert Schuman hospital, the arboretum contains tree species and rock samples from member states of the European Union.



## EDMUND KLEIN PARK, KINNEKSWISS, AND PESCATORE PARK

One of the oldest parks in the city, the Edouard André Park is at one end of a green space that forms a semi-circle around the old town. At the other end the Edith Klein Park has a small lake, a fountain, and statues of Mahatma Gandhi and Victor Hugo, and in between, is the recently refurbished pirate park, complete with a giant pirate ship, water play features, a tube slide and tyre swings. Kids can climb the rigging or search for buried treasure in the sand.

Towards Glacis, the Kinnekswiss park provides some welcome summer shade and hosts open-air concerts, outdoor yoga, and fun-fair rides, whilst Pescatore Park invites you to sit on a bench by the fountains, or take the panoramic glass elevator to Pfaffenthal.

## PÉTRUSSE PARKS

Starting by rue d'Anvers, the parks in the Pétrusse valley are currently undergoing renovation until the end of the year, but include an outdoor fitness area, soccer and basketball courts, a playground for kids, and one of Europe's largest skate parks. The work will allow the river to flow through its natural course. You can still enjoy segments of the park and take several paths that lead up the valley into the old town.



## FAMILY PARKS

### BAMBËSCH

Set in forest at the edge of the city, with plenty of walking trails, this park has a brand-new adventure playground. Designed in wood and stone, in keeping with its surroundings, the playground challenges kids to discover new scientific concepts with a water play area, a wooden parkour, and a sound maze, but has swings, slides, and zip wires, plus plenty of shady spots under the trees for a picnic. Themed around the historic landmarks of the city, there are seven play sections including a wooden replica of the Dräi Eechelen fort. The number 33 bus travels from the city to the park.

### MERL PARK

A pond flanked by a cafe, a rose garden, dog park, and children's playground, Merl Park makes a great family destination. In summer there are trampolines, or children can enjoy the climbing frames, zip lines, tube slides and a sandpit. From autumn the playground will undergo a refurbishment which will see mini sailboats for rent, a racetrack for bikes, and a new picnic area.

A woman with short dark hair, wearing a dark plaid dress and white sneakers, stands in a bright room. She holds a laptop in her right hand and points with her left. A large red diagonal graphic is behind her. The room has a large window on the left, a white door on the right, and a tiled floor.

# Simplify your life !

**On axa.lu it only  
takes 3 clicks to get  
your apartment's  
insurance quote**



DON'T WORRY  
*be happy*